

---

This manuscript and the associated Supplemental Information is a preprint. It is currently submitted for publication in a peer reviewed journal. This engrXiv version of the manuscript has not undergone external peer-review, but only internal, as part of the Engineering X Safer End of Engineered Life programme. As a result, subsequent versions of the manuscript will have slightly different content. If accepted, the final version of this manuscript will be available updated here via DOI link. We welcome your feedback - please contact the corresponding author directly.

---

## **Mismanagement of plastic waste through open burning in the Global South: A systematic review of risks to occupational and public health**

Costas A. Velis <sup>a,\*</sup>, Ed Cook <sup>a</sup>

<sup>a</sup>*School of Civil Engineering, University of Leeds, Leeds, LS2 9JT, UK*

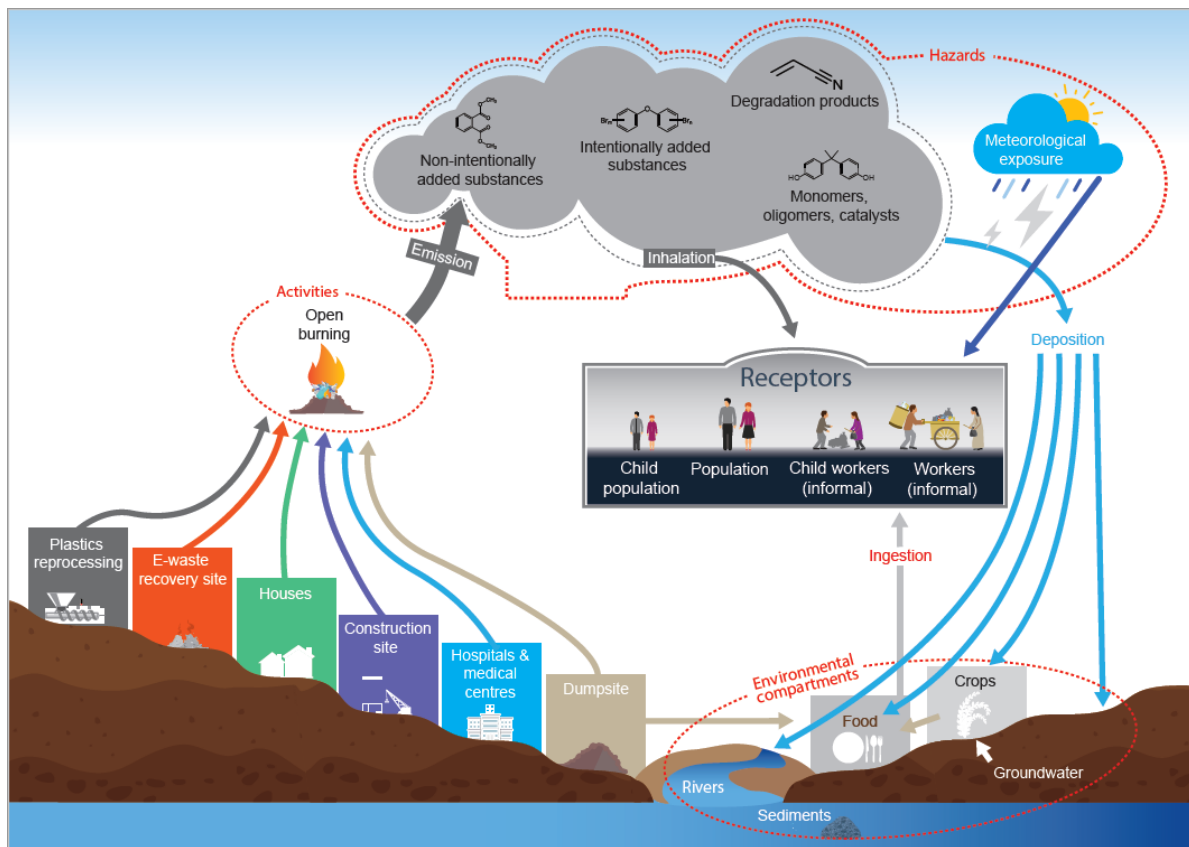
\*Corresponding author: [c.velis@leeds.ac.uk](mailto:c.velis@leeds.ac.uk) ; Telephone: +44 (0) 113 3432327; Room 304, School of Civil Engineering, University of Leeds, Leeds, LS2 9JT, United Kingdom

## Abstract

Large quantities of mismanaged plastic waste threaten the health and wellbeing of billions worldwide, particularly in low- and middle-income countries where waste management capacity is being outstripped by increasing levels of consumption and plastic waste generation. One of the main self-management strategies adopted by 2 billion people who have no waste collection service, is to burn their discarded plastic in open, uncontrolled fires. While this strategy provides many benefits, including mass and volume reduction, it also results in the release of chemical substances and particles that may pose serious risks to public health and the environment. We followed PRISMA guidelines to select and review 20 publications that provide evidence on potential harm to human health from open burning plastic waste, arranging evidence into eight groups of substance emissions: brominated flame retardants; phthalates; potentially toxic elements; dioxins and related compounds; bisphenol A; particulate matter; and polycyclic aromatic hydrocarbons. We semi-quantitatively assessed 18 hazard-pathway-receptor combination scenarios to provide an indication of the relative harm of these emissions so that they could be ranked, compared and considered in future research agenda. This assessment overwhelmingly indicated high risk of harm to waste pickers, a large group of 11 million informal entrepreneurs who work closely with waste, delivering a circular economy but often without protective equipment or many structured, safe system of work. Though the risk to human health from open burning emissions is high, this remains a substantially under-researched topic.

**Keywords:** Plastic, Solid waste, Health and safety, Risk, Global South, Resource recovery, Circular economy, Combustion, Open burning, Uncontrolled burning, Mismanaged waste.

# Graphical Abstract



## Abbreviations

ABS	acrylonitrile butadiene styrene
Backg'd	background
BaP <sub>eq</sub>	benzo(a)pyrene equivalent
BDEs	brominated diphenyl ethers
BFR	brominated flame retardants
BPA	bisphenol A
ca.	circa
CCME	Canadian Council of Ministers of the Environment
CI	confidence interval
Com.	commercial
Conc.	concentration
DEHP	di(ethylhexyl) phthalate
DEP	diethyl phthalate
DMP	dimethyl phthalate
DRC	dioxins and related compounds
EU	European Union
Geog.	geographical context
HBB	hexabromobiphenyl
HBCD	hexabromocyclododecane
HDPE	high density polyethylene
IPCC	Intergovernmental Panel on Climate Change
IRS	informal recycling sector
K-resin	styrene-butadiene copolymer
L	likelihood
LDPE	low density polyethylene
LIMIC	low income and middle income countries
MSW	municipal solid waste
Mt	million metric tons
Na	not available
NEERI	National Environmental Engineering Research institute (2010)
PAH	polycyclic aromatic hydrocarbons
PBDEs	polybrominated diphenyl ethers
PC	polycarbonate
PC-ABS	polycarbonate/acrylonitrile-butadiene-styrene
PCB	polychlorinated biphenyls
PCDD	polychlorinated dibenzo-p-dioxins
PCDD/Fs	polychlorinated dibenzo-p-dioxins and polychlorinated dibenzo-p-furans
PCDF	polychlorinated dibenzofurans
PE	polyethylene
PET	polyethylene terephthalate
phth.	phthalates
PM	particulate matter
PM <sub>0.1</sub>	particulate matter < 0.1 µm
PM <sub>10</sub>	particulate matter < 10 µm
PM <sub>2.5</sub>	particulate matter < 2.5 µm
PP	polypropylene
PS	polystyrene
PTE	potentially toxic elements
PVC	polyvinyl chloride
pw	plastic waste
R	risk
Res.	residential

RQ	research question
S	severity
SBC	styrene-butadiene copolymer
SD	standard deviation
Sed.	sediment
TBBPA	tetrabromobisphenol A
TCDD	2, 3, 7, 8-tetrachlorodibenzodioxin
ton	1,000 kg
TPM	total particulate matter
USMR	uncertainty, strength of knowledge and methodological robustness
VOC	volatile organic compound
wt.	weight (i.e. a weight reporting basis)

## 1. Introduction

The topic of solid waste mismanagement has attracted considerable attention in recent years, not least because of the large quantities of plastic waste that are reported to enter the aquatic environment (11 million metric tons per annum  $\text{Mt y}^{-1}$ ), mainly in the low- and middle-income countries (LIMICs) of South and Southeast Asia.<sup>1</sup> Our high dependence on plastics in almost every aspect of life has resulted in an exponential growth curve for plastic production since the 1950s, anticipated to continue unabated until 2050.<sup>2</sup> Underlying this growth in plastic production, is the rapidly rising population that is projected for several middle-income countries in the Global South,<sup>3</sup> where newly attained prosperity is allowing their citizens to benefit from the properties and characteristics that plastics bring to their lives such as freshness of food, fuel economy of transport systems, and insulating properties in constructions. Critically, increases in packaging production are anticipated, a stream that has an inherently short use phase, often becoming waste within a few months of production.

This rapid projected increase in plastic waste generation in LIMICs, particularly for short-use items and objects will necessitate concurrent and concerted effort by municipalities to provide systems to collect, dispose and potentially reclaim, recycle and recover significant additional material. However, the present situation is that approximately 40% wt. of municipal waste plastics are already mismanaged and that this proportion is projected to increase to 55% wt. by 2040 unless considerable and concerted action is taken to either inject more resources into an already struggling waste management system or dramatically reduce the mass that enters it. Controlling and reducing this mass of unmanaged plastic waste is fast becoming one of the dominant environmental topics of the 21<sup>st</sup> century.

As yet, the focus on emissions of plastic debris to the marine environment has dominated the plastic pollution research landscape, with many of the proposed solutions focusing on reduction of at-risk items through fractional (by weight) plastic bans and action to stimulate the circular economy for materials.<sup>4-6</sup> However, other forms of plastic pollution have received comparatively little attention in recent years and the focus on circular economic aspirations has detracted from the foundational imperative for waste management in the first place, to protect human health and reduce our interaction with harmful effects of solid waste.<sup>7</sup> Two environmental compartments, the land and the atmosphere, accumulate large amounts of plastics, the former as debris in dumpsites ( $12 \text{ Mt y}^{-1}$ ) and diffuse terrestrial deposits ( $18 \text{ Mt}$

y<sup>-1</sup>), and the latter in the form of gasses, vapors and particulates that are emitted when plastics are combusted in open, uncontrolled fires (49 Mt y<sup>-1</sup>).<sup>1</sup>

For the 2 billion inhabitants of earth that have no solid waste collection,<sup>8</sup> open burning is an effective self-management approach that quickly reduces the mass (up to 75% wt.) and volume (up to 90% v/v.) of accumulated material, whilst considerably compressing its bioactivity and associated direct infection risk;<sup>9</sup> and, hence, reducing also odor and avoiding the spread of mosquitos, that transmit malaria.<sup>10</sup> In this perverse sense, open burning may offer perceived or actual benefits to people: however, this could be coming at a serious potential risk to their own health and that of the people with whom our atmosphere is shared. Importantly, many of the most affected individuals are also the world's poorest people, including approximately 11 million waste pickers (a conservative estimate),<sup>11</sup> who, as strong anecdotal evidence suggests, work in close proximity to waste fires; and who have few choices about whether to sustain exposure to their emissions.

Two prominent studies have investigated the open burning of waste with a global perspective. Lemieux et al.<sup>12</sup> provided a comprehensive review of emission factors associated with the open burning of different materials, many of which were waste. The study highlighted several substance groups including certain brominated flame retardants (BFRs), dioxins and related substances (DRCs), polycyclic aromatic hydrocarbons (PAHs), particulate matter (PM) and volatile organic compounds (VOCs). Wiedinmyer et al.<sup>13</sup> has presented the only comprehensive global estimate of emissions from the open burning of waste specifically to date, the study used by several other authors as a basis for further research since. For instance, Cogut<sup>14</sup> presented the Wiedinmyer et al.<sup>13</sup> model outputs in the context of the wider waste management system. Kodros et al.<sup>15</sup> also used the Wiedinmyer et al.<sup>13</sup> data and combined them with a global burned of disease study by Lim et al.<sup>16</sup> to estimate 270,000 premature deaths per year worldwide (5<sup>th</sup> to 95<sup>th</sup>: 213,000 to 328,000) from the open burning of waste. In a more recent study, Williams et al.<sup>17</sup> combined the findings of Kodros et al.<sup>15</sup> with World Health Organization<sup>18</sup> and Institute for Health Metrics and Evaluation<sup>19</sup> to estimate 270,000 and 270,500 premature deaths from the open burning of waste that included an additional 5,000 child deaths not included in the Kodros et al.<sup>15</sup> estimate. Only one global NGO report by Gower et al.<sup>20</sup> has specifically focused on emissions from the open burning of plastic waste, targeting in particular items produced by four major international corporations (Coca-Cola, Nestlé, PepsiCo and Unilever). The study was not subject to blind peer review,

but involved informal academic review, and concentrated on the contribution to global warming from black carbon and CO<sub>2</sub> emissions.

Importantly, no study as yet, has attempted to collate and summarize evidence that focuses on the human health impacts of the open burning of plastics waste as a distinct material. Given, the large quantities of plastic waste that are reported to be open burned each year and their potential to expose many millions, possibly billions of the world's poorest people to a cocktail of hazardous emissions, we have, for the first time, collected, arranged and synthesized available evidence on the issue using a systematic approach based on PRISMA guidelines. We begin this paper with an appraisal of evidence to indicate the mass of waste material burned in the open in different contexts (**Section 3.2**); this section does not strictly form part of the systematic review, but was intended to provide crucial context on the magnitude of the open burning phenomenon – also a prerequisite to any global risk assessment. This is followed by six sections that address the state of knowledge around the emissions from burning waste plastics. Finally, we provide an indicative score for a series of hazard-pathway-receptor combinations to assist with basic ranking and prioritization of future areas of research. We do not include appraisal of incineration or energy from waste, at least where they incorporate air pollution control technology and management, as these are clearly out of the scope of open uncontrolled burning.

## **2. Methods**

### **2.1. Systematic review**

Our systematic review followed the PRISMA guidelines,<sup>21</sup> adapted according to a method presented by Cook et al.<sup>22</sup> covering three databases: Scopus, Web of Science and Google Scholar. Three research questions (**RQ**) were explored:

- **RQ1:** What evidence exists to indicate risk to public and occupational safety posed by plastic waste?
- **RQ2:** What are the comparative risks to public and occupational safety that arise from the management of plastic waste?
- **RQ3:** What research could be carried out that would have the greatest impact on harm reduction in the plastic waste management sector?



Boolean search queries are listed in the Supporting Information (SI) (**Section 1.2**). They were streamlined using one-at-a-time sensitivity analysis to ensure the maximum number of relevant articles whilst reducing the number of non-relevant sources. Articles were included or excluded according to criteria detailed in (**S1.3**). Snowball and citation searching techniques<sup>23</sup> were used to identify further relevant literature. Several websites and datasets were also queried for further relevant information, including those of Health and Safety Executive<sup>24</sup>, International Labour Organization<sup>25</sup>, The World Bank<sup>26</sup> and World Health Organization<sup>27</sup>.

The hazards posed by waste plastics and substances arising from them were identified in each information source and listed alongside receptors and the various pathways through which they may be exposed to each hazard. These hazard-pathway-receptor combinations were further classified into three groups of activities that emerged: 1) Legacy substances of concern emerging in secondary plastics; 2) Extrusion or secondary plastics; and 3) Open burning of plastics. Groups 1 and 2 are reported by Cook et al.<sup>22</sup>, whilst the present review critically assessed and summarized the literature classified in group 3. The overall flow of information for the stages of the review is detailed in **Section S.1.4**. The hazard source-pathway-receptor combinations were used to produce a theoretical conceptual diagram (**Figure 1**), which illustration potential core pathways through which receptors may be potentially exposed to hazards emerging from specific sources.

Estimates to indicate the mass of waste openly burned were included to add context and scale to the review, and were obtained separately to the main literature review via non-systematic snowball and citation searching.

## **2.2. Uncertainty, strength of knowledge and methodological robustness (USMR)**

As required by PRISMA guidelines<sup>21</sup>, the strength of information provided in each of the sources reviewed was assessed. In our review this was done qualitatively and coded according to USMR on a case-by-case basis; commentary is provided in footnotes below each table, unless no issues were identified. Specifically, data / information reported in the literature falling within the scope of inclusion criteria were assumed to be robust unless marked for: (i) inconsistent or ambiguous description of sampling and sample processing; (ii) issues of comparability with data reported by different authors; and, (iii) comparability affected by age of study.

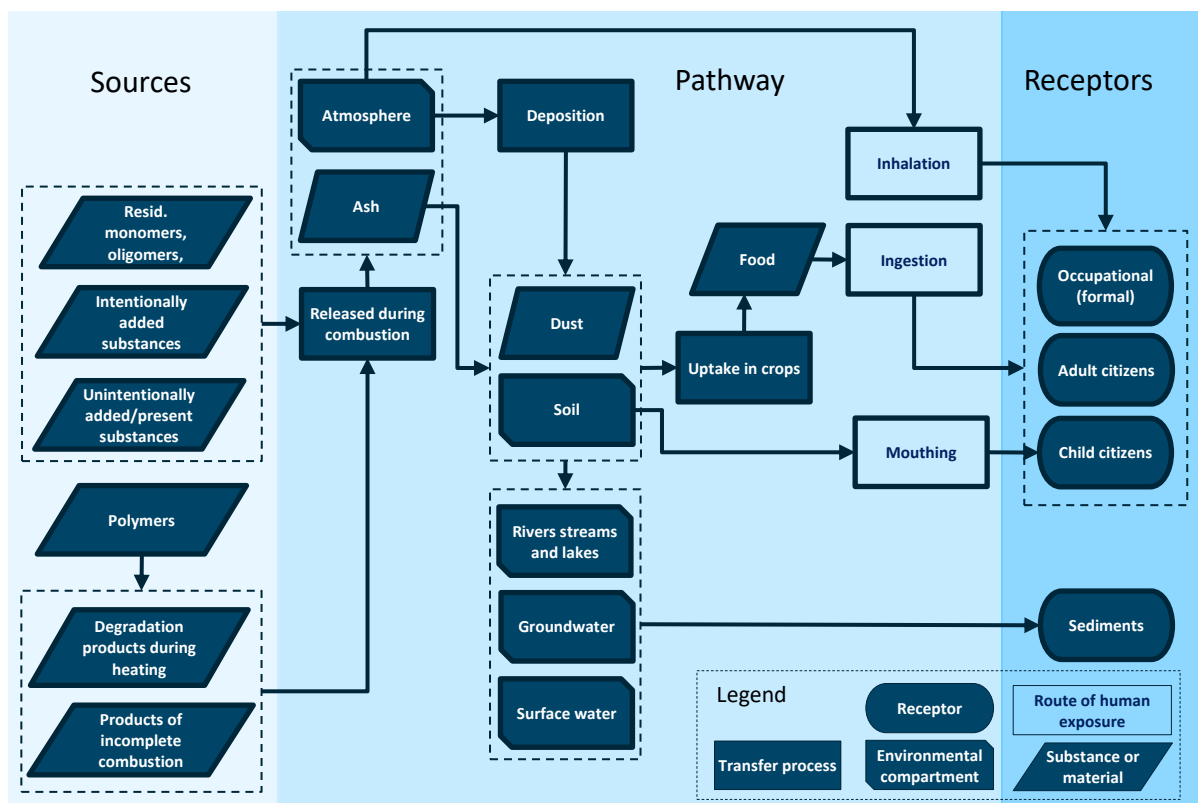
### **2.3. Risk based approach**

To assist with comparisons and ranking of the relative risk of each hazard-pathway-receptor combination, a risk-based approach reported by Cook et al.<sup>22</sup>, adapted from Hunter et al.<sup>28</sup>, Kaya et al.<sup>29</sup>, World Health Organization<sup>30</sup> and Burns et al.<sup>31</sup>. This approach assigns likelihood and severity scores to each hazard-pathway-receptor combination, enabling an indicative scoring of risk to be calculated. The matrix for scoring is shown in **Section S.2**. This process was not an attempt to fully and comprehensively quantify risk (which is not possible given the paucity of data), but instead intended to support decision-making on directing future research agenda. The aggregated results of this process are shown, ranked in **Section S.3**.

## **3. Open burning of plastic waste**

### **3.1. Context**

The variable conditions in plastic waste open fires results in the emissions of a wide range of gasses, particles and vapors.<sup>12</sup> These substances have several origins. First, there are substances that have been intentionally added to plastics to improve their properties. For instance, flame retardants, fillers, antioxidants, and impact modifiers.<sup>32</sup> Second, there are substances that have been added unintentionally as a result of the inclusion of recycled content, so called ‘legacy substances’ that were either additives to a previous product or that were introduced during the reprocessing or sorting of the previous product. Third, there are substances and derivatives that were used or arose during the production of the primary polymer, including catalysts, monomers and partially formed polymers called dimers or oligomers. Fourth, are substances that are produced during combustion as a result of thermochemical reactions that take place during impartial combustion, a phenomenon of low and variable temperatures that exist in open, uncontrolled waste fires. These four groups of multiple substances products leave residues in ash form (‘inert’, incombustible part), or are released into the atmosphere from where they may be deposited onto land or into water with a risk of entering the food chain. A summary of the various exposure pathways is shown in the theoretical conceptual diagram in **Figure 1**.



**Figure 1:** Theoretical hazard exposure conceptual source-pathway-receptor model associated with open uncontrolled burning of plastic waste (risks from substances contained and combustion/ heating products).

### 3.2. Mass of waste openly burned

Understanding emissions from open burning of plastic waste and the resultant health implications, requires information about how much material is combusted in different contexts. In **Table 1**, 31 proportional estimates from 12 authors across six different waste stream denominators are shown for comparison. It is striking that most highly cited article by Wiedinmyer et al.<sup>13</sup> uses an Intergovernmental Panel on Climate Change (IPCC)<sup>33</sup> estimate of 60% of municipal solid waste (MSW) deposited in dumpsites in LIMICs, which is based on an expert elicitation exercise. While expert elicitation is a useful last resort for estimating parameters in a sector where data is scarce, they do not purport to provide accurate data. Other estimates such as the National Environmental Engineering Research institute<sup>34</sup> (NEERI) relate only to wards of Mumbai which have a dumpsite and uses an unclear denominator. As with the IPCC estimate, the NEERI study has its own risk of bias as the estimates were made on the basis of discussions with the Mumbai local authority who may have a vested interest to underestimate the mass. There was also no indication of how many officials were interviewed and what their position was.

**Table 1:** Selected estimates of the proportion of municipal solid waste (MSW) open burned in different geographical and socio-economic contexts.

Denominator	Ref.	Secondary source	Country	Locale	Geog.	Basis	Context	Rurality	Proportion
				Delhi	City				2-3%
				Agra	City	Transect study			24%
		Yedla & Parikh (2001)		Mumbai	City	Assumptions			2%
		CPCB (2010)		Delhi	City	Assumptions			1%
		Sharma (2010)	IND	Kanpur	City	Visual observation survey in few neighborhoods			8%
	Nagpure et al. <sup>35</sup>	Guttikunda (2007)	MNG	Ulaanbaatar	City	Assumptions		Urban	20%
	Pansuk et al. <sup>36</sup>		THA		National	Interviews (n=24)		Urban & rural	13%
	Chanchampee <sup>37</sup>		THA		National	Assumptions		Urban & rural	36%
	Premakumara et al. <sup>38</sup>		PHL		National	Assumptions		Urban & rural	17.5%
	Reyna-Bensusan et al. <sup>39</sup>		MEX	Huejutla de Reyes	Municipality	Survey		Urban & rural	23.4-24.7%
	National Environmental Engineering Research institute <sup>34</sup> (NEERI)		IND	Mumbai	City	Interviews with officials		Urban	2%
	Bundhoo <sup>40</sup>	Getahun et al. (2012)	ETH	Jimma	City			Urban	22%
		UN-Habitat (2014)	SLB	Honiara	City			Urban	23%
	Christian et al. <sup>41</sup>	McCulloch et al. (1999)	Global		Global	Assumption	LIMIC	Urban & rural	50%
	Wiedinmyer et al. <sup>13</sup>		Global		Global	Assumption (IPCC)	Global	Urban & rural	41%
All MSW	US Environmental Protection Agency <sup>42</sup>		USA		National	Survey	HIC	Rural	25-32%
								Urban	2-6%
								Peri-urban	4.5-9.2%
								Rural	66%
								Urban, peri-urban & rural	36%
	Reyna-Bensusan et al. <sup>39</sup>		MEX	Huejutla de Reyes	Municipality	Survey	LIMIC		
	Christian et al. <sup>41</sup>	USEPA (2006)	USA		National		HIC	Rural	12-40%
Household solid waste	Ghana Statistical Service <sup>43</sup>		GHA		National	Survey (n=37,026)	LIMIC	Not stated	7.7%

Denominator	Ref.	Secondary source	Country	Locale	Geog.	Basis	Context	Rurality	Proportion
	Kumari et al. <sup>44</sup>		IND	Ten cities and national	Cities & national	Assumption (IPCC)		Urban & rural	10 – 20%
	Pansuk et al. <sup>36</sup>		THA		National	Interviews (n=24)		Urban & rural	53.7%
	Premakumara et al. <sup>38</sup>		PHL		National	Assumptions	LIMIC	Urban & rural	50%
Uncollected waste	Wiedinmyer et al. <sup>13</sup>		Global		Global	Assumption (IPCC)	Global	Urban & rural	13%
Dumpsite waste	Wiedinmyer et al. <sup>13</sup>		Global		Global	Assumption (IPCC)	LIMIC HIC	Urban & rural	60% 13%
Landfilled waste <sup>a</sup>	National Environmental Engineering Research institute <sup>34</sup> (NEERI)		IND	Mumbai	City	Interviews with officials	LIMIC	Urban	10%
Collected waste	Pansuk et al. <sup>36</sup>		THA		National	Interviews (n=24)	LIMIC	Urban & rural	2.5%

<sup>a</sup>NB the definition of landfill in this context is not specified and it is likely that the sites described would be classified as an open dumpsite. Abbreviations: municipal solid waste (MSW); Intergovernmental Panel on Climate Change (IPCC); low income and middle-income countries (LIMIC); high income countries (HIC); geographical context of the study (Geog.).

The largest sample and possibly most reliable estimate was provided by Pansuk et al.<sup>36</sup> who interviewed municipal officials (n=96) and householders (n=4,300) across Thailand finding that 54% wt. of all MSW was burned residentially and a further 2.5% wt. was burned by local authorities post collection; presumably in open dumpsites. As with the NEERI estimate, local authority interviewees may have a vested interest in underestimating the mass open burned, and the data is specific to Thailand. However, the data suggests confirmation of the practice, albeit at a low rate.

Several other studies provide evidence for open burning on land disposal sites such as Oyegunle<sup>45</sup> who sampled soils on dumpsites in Canadian First Nation communities; Chanchampee<sup>37</sup> who reported that 66% of landfills in Thailand practice open burning as a form of waste reduction; Cuadra<sup>46</sup> who reported the burning of MSW to retrieve metals; and Rim-Rukeh<sup>47</sup> who reported emissions characteristics at five landfill/dumpsites in Nigeria where fires were a frequent occurrence. Other forms of data exist to evidence open burning on land disposal sites such as: video footage from Lenkiewicz<sup>48</sup> in The Gambia, Human Rights Watch<sup>49</sup> in Lebanon, and TracingThought<sup>50</sup> in Bali; and from news articles such as Chandrashekar et al.<sup>51</sup> in Bengaluru and Doshi<sup>52</sup> in Kolkata.

Importantly, none of these estimates include disaggregated data that indicate the mass of plastic waste that is openly burned. Whilst it is understandable that this has not been done, as waste is often burned in mixed format, developing a better understanding of the fraction that is plastic would improve the estimates of open burning emissions as the profile is distinctly different from other types of material.<sup>12</sup>

### **3.3. Brominated flame retardants (BFR)**

BFRs have been in use since the 1950s as additives in plastics used in applications where there is a risk of fire such as cars, airplanes, furniture and electrical and electronic equipment.<sup>53</sup> The groups of substances which can be classified as BFRs include bromophenols, hexabromocyclododecane (HBCD), polybrominated diphenyl ethers (PBDEs) and tetrabromobisphenol A (TBBPA) which is reported by The International Bromine Council<sup>54</sup> to be the most widely used BFR still on the market, used mainly (90%) in printed circuit boards, but also as a direct additive to engineered plastics (10%). Of the PBDEs, three broad formulations exist, Penta-BDE, Octa-BDE and Deca-BDE include 209 congeners. The Stockholm Convention lists and targets for elimination, multiple BFRs due to their

persistence in the environment and potential toxicity for humans and animals. Both the Octa- and Penta-BDE and formulations were classified by the Stockholm Convention as persistent organic pollutants in May 2004 and the Deca-BDE formulations were added in 2019.<sup>55</sup>

HBCD was added to Annex A of the Stockholm Convention in 2014, with certain products still permitted for use including some building insulation foams made from polystyrene (PS) as long as they are labelled as such.<sup>56</sup> According to Sharkey et al.<sup>55</sup>, several groups of BFRs are almost completely prohibited in some countries and regions, for instance in the European Union (EU), hexabromobiphenyl (HBB), and HBCDD and PBDEs are entirely prohibited for use in production or content in products.

In plastics, BFRs are not generally chemically bonded to the polymers, but occupy the space in between. They inhibit combustion and therefore when the host polymer is burned, they are released as gas, airborne particulates and in the residual ash. To date, most research into the open burning of MSW has concentrated on dioxins, with little attention paid to BFRs. In this study only a single research output by Hong-Gang et al.<sup>57</sup> was revealed which assessed BFR emission potential from combustion of plastic waste (**Table 2**). BFR concentrations were measured in five polymers collected from waste sites in China along with atmospheric emissions and residues in ash. All samples contained significant quantities of BFR congeners, albeit below the one million ng g<sup>-1</sup> thresholds set by the European Restrictions on Hazardous Substances Directive<sup>58</sup> and Persistent Organic Pollutants Regulations.<sup>59</sup> Nonetheless, the presence of certain BFRs in all samples is an indication of a secondary plastics market where the source of feedstock is not controlled to reduce the risk of hazardous substances re-entering the product stream.

**Table 2:** BFR concentration in plastic wastes and emission factors when combusted; after Hong-Gang et al.<sup>57</sup>.

BFR	Polymer	Plastic waste <sup>a</sup> (ng g <sup>-1</sup> )		Gas phase (ng g <sup>-1</sup> -pw)		Airborne particle (ng g <sup>-1</sup> -pw)		Residual ash (ng g <sup>-1</sup> -pw)		Total
		Mean <sup>c</sup>	SD	Mean	SD	Mean	SD	Mean	SD	
	PVC	61,900	62,200	11.8	19.6	556	1,330	206	266	775
	PS	388,000	463,000	124	210	605	667	0.1	0.3	729
	ABS	26,700	22,600	93.6	245	650	1,310	1,050	2,340	1,790
	PP	67,000	88,400	8.6	24.2	37.1	83.8	556	1,040	602
	PE	228,000	246,000	96.2	208	20,700	40,400	13,900	31,600	34,700
	Mean <sup>b</sup>	154,320		66.8		4,520		3,140		7,720
ΣPBDE	Median	67,000		93.6		605		556		775
ΣHBCD	PVC	18,700	7,310	10.2	0.9	26.8	3.7	6.7	0.8	44

BFR	Polymer	Plastic waste <sup>a</sup> (ng g <sup>-1</sup> )		Gas phase (ng g <sup>-1</sup> -pw)		Airborne particle (ng g <sup>-1</sup> -pw)		Residual ash (ng g <sup>-1</sup> -pw)		Total
		Mean <sup>c</sup>	SD	Mean	SD	Mean	SD	Mean	SD	
	PS	20,800	7,680	13.3	1.7	5,290	1,100	7.2	0.7	5,310
	ABS	18,700	8,640	13.0	1.1	43.7	9.7	4.9	0.6	62
	PP	25,000	7,980	15.6	1.3	48.1	11.4	60.0	15.8	124
	PE	20,300	7,360	17.1	1.6	61.0	9.5	77.1	22.1	155
	Mean	20,700		13.8		1,090		31.2		1,140
	Median	20,300		13.3		48.1		7.2		124

<sup>a</sup> Plastic items used were as follows: PVC: cable sheath, wire jacket, tube; PS: foamed plastic, disposable plate, meat tray; ABS: cell-phone casing, air-conditioning wind deflector, computer housing; PP: soybean milk machine cover, lunch box, plastic bailer; PE: bottle, corrugated pipe, toys. <sup>b</sup> Arithmetic mean of means; <sup>c</sup> arithmetic mean. Abbreviations: polypropylene (PP); polystyrene (PS); polyethylene (PE); acrylonitrile-butadiene-styrene (ABS); polyvinyl chloride (PVC); hexabromocyclododecane (HBCD), polybrominated diphenyl ethers (PBDEs); plastic waste (pw); standard deviation (SD). The highest concentration observed by Hong-Gang et al.<sup>57</sup> in the plastic itself was in the PS, and may originate from the foam board or corrugated pipe either of which may be expected to have some flame retardant properties. However, this is speculation; the authors did not test for any food contact material in this category separately, and it would have been useful to understand if these contained unregulated concentrations of BFRs. PE also showed a high BFR content, which may have originated from the corrugated pipe. Interestingly the PE showed a much higher ratio of airborne particle concentrations to plastic concentration compared to the PS that appeared to have fully combusted or transformed most of the BFRs.

Hong-Gang et al.<sup>57</sup> contextualized their findings by using the emission factors presented in **Table 2** to model emissions from incinerators at national level in China based on an emissions abatement efficiency of 99%; estimating 25.5 metric tons per annum emitted to the atmosphere and 71.7 metric tons per annum deposited in landfill or open dumpsites. The study did not estimate emissions from open burning which are completely unabated, and it is a recommendation of the present study that this calculation is carried out to estimate the magnitude of release of these potentially hazardous substances.

BFR concentrations in soils and sediments are also an indicator of plastic open burning activity. Both Tang et al.<sup>60</sup> and Tang et al.<sup>61</sup>, investigated soil and sediment concentrations in an area of China where plastics recycling has been a major activity for more than 30 years. While the studies were unable to determine whether the soil and sediment concentrations resulted from open burning, abrasion or extrusion, the higher temperatures in open burning compared to extrusion could indicate that open burning may be the more likely source. Tang et al.<sup>60</sup> complimented the soil and sediment concentrations by taking hair samples from the local population. Young people, who are more likely to be involved in plastic recycling operations, had much higher concentrations, 133 ng ΣPBDE g<sup>-1</sup> hair (dry wt.), compared to children and older adults, indicating that BFRs may be transferring into their bodies through occupational exposure.



### 3.4. Phthalates

In plastics, phthalates are used primarily as plasticizers in polyvinyl chloride (PVC) where they modulate elasticity in products such as toys, building materials, clothing, and medical appliances,<sup>62</sup> with annual consumption is reported to be as high as 8 Mt y<sup>-1</sup>.<sup>63</sup> Their low molecular weight and tendency for non-covalent bonding to polymers means that some formulations are very sensitive to changes in temperature and pH and readily escape from their host products into environmental media where they have potential for long-range transport<sup>64</sup> and are found in almost all compartments.<sup>65</sup>

Phthalates bond readily with fats, which means they are easily absorbed into the human bloodstream. Once inside the human body, they are transformed, and their metabolites can irreversibly disrupt the endocrine system,<sup>66</sup> metabolism<sup>67</sup> and interfere with thyroid hormones.<sup>68</sup>

Several studies have investigated phthalate transmission from waste incinerators, finding that they have the potential to be emitted intact from facilities without adequate air pollution control and management.<sup>63, 64</sup> However, studies of phthalate concentration in the ambient atmosphere as a consequence of open burning plastic waste are limited. Simoneit et al.<sup>66</sup> combusted samples of several plastic products, some of which were single polymer and some of which were mixtures (**Table S5, Section S.4**). The data indicate phthalate emissions from several sources, but the data are hard to contextualize because they were presented as a proportion of ‘soot’ generated from combustion of approximately 20 g of material.

Two papers have reported concentrations of phthalates in ambient outdoor air in Northern Indian cities<sup>69, 70</sup> and these are contextualized with concentrations observed in urban and remote environments by Teil et al.<sup>71</sup> and Thuren et al.<sup>72</sup> (**Table 3**).

**Table 3:** Total phthalate concentrations observed in ambient atmospheric samples and plastic extrusion facilities.

Ref.	Context	Sampling	Phase	Conc. (ng m <sup>-3</sup> )		
				Mean	SD / CI / range	USMR#
Shivani et al. <sup>69</sup>	National Capital region, IND	Atmospheric field sampling	Delhi	502.7	SD 136.4	
			Modinagar	387.7	SD 124.3	
			Mahendragarh	160.4	SD 43.8	
			Delhi	210.8	± 79.7	
			Uttar Pradesh	158.9	± 72.2	
Gadi et al. <sup>70</sup>	National Capital region, IND	Atmospheric field sampling	Haryana	130.4	± 63.6	P
Teil et al. <sup>71</sup>	Paris, FRA	Atmospheric field sampling	Paris	8.2	3.9-13	

Ref.	Context	Sampling	Phase	Conc. (ng m <sup>-3</sup> )		USMR <sup>#</sup>
				Mean	SD / CI / range	
			Vapor phase	55.3	20.6-109.3	
		Enewetak Atoll, N Pacific Ocean		2.27		
		Portland, Oregon		0.76		
		Great Lakes		4		
Thuren et al. <sup>72</sup>		Sweden	Gas/particle phase	3.7		

<sup>a</sup> comparison between exposed and reference concentrations significant ( $p < 0.05$ ); <sup>#</sup> uncertainty, strength of knowledge and methodological robustness (USMR) assessed qualitatively. It is assumed that there are no significant concerns unless marked as: P = results are indicative. While most phthalates are reported to originate from plastic waste burning, the study reports significant emissions from biomass burning. Gas phase not quantified. Results show species identified in PM<sub>2.5</sub> only. Abbreviations: dimethyl phthalate (DMP); diethyl phthalate (DEP); di-2-ethylhexyl phthalate (DEHP); styrene-butadiene copolymer (SBC); concentration (conc.); standard deviation (SD) confidence interval (CI)

The near ubiquity of phthalates, multitude of sources and ready migration from their host products and materials means that it is complex to determine if the emissions detected by Gadi et al.<sup>70</sup> and Shivani et al.<sup>69</sup> are a result of the open burning of plastic waste. Atmospheric emissions of phthalates may arise from manufacturing processes; vehicle exhausts; interior vehicle components; paints and coatings; plastic items; and agricultural fertilizers and insecticides.<sup>70, 71</sup> Therefore, measured atmospheric concentrations of phthalates are problematic to disaggregate from other emissions sources.

Both Gadi et al.<sup>70</sup> and Shivani et al.<sup>69</sup> used positive matrix factorization to apportion emissions sources to substances measured in PM<sub>2.5</sub> particles sampled at four locations in North India. The critical emissions factors used to apportion phthalate concentrations are from Simoneit et al.<sup>66</sup>, also reported in the present study; indicating that 50-60% of phthalate emissions in the sampled areas originated from the open burning of plastic waste.

Concentrations of ambient atmospheric phthalates reported by Gadi et al. and Shivani et al. were in the order of two to ten times greater than maximum values reported in Paris<sup>71</sup> and comparable with concentrations identified inside ABS-PC and K-Resin extrusion plants that did not implement emissions control measures reported by Huang et al.<sup>73</sup>. Though they are relevant to indoor air in the workplace, the concentrations were very low in comparison to the mean long term Workplace Exposure Limits (WEL) over eight hours of 5,000,000 ng m<sup>-3</sup> recommended by the United Kingdom's (UK's) Health and Safety Executive<sup>74</sup>.

### 3.5. Potentially toxic elements (PTEs)

Many elements have the potential for toxicity in humans, particularly some metals such as cadmium, lead, chromium and nickel, all of which have the potential to cause cancer.<sup>75</sup> Other

elements used in plastics are metalloids, for instance antimony, which is used as a synergist in BFRs can irritate the lungs at low concentrations and arsenic, which is used in small quantities as a biocide<sup>32</sup> and which can cause vomiting diarrhea and death in extreme circumstances.<sup>76</sup> Collectively these substances are often discussed as ‘heavy metals’; however, here we use the term ‘potentially toxic elements’ (PTEs) as suggested by Pourret et al.<sup>77</sup> as a less ambiguous term.

As well as being used as additives to enhance properties in plastics, PTEs are used as catalysts in polymer production. One of the most common examples of a catalyst is Ziegler-Natta that can potentially leave titanium(IV) and aluminum oxide residues for instance.<sup>78</sup> Several examples also exist to indicate that PTE content in plastic through unintentional contamination such as during the reprocessing of e-waste or end-of-life vehicles.<sup>75, 79</sup>

The review by Cook et al.<sup>22</sup> revealed that migration to the surface of plastics is very limited from PTEs in waste plastics, even when mouthed by children or aerosolized during mechanical processing. Nonetheless, we have identified three laboratory studies (**Table 4**) which evidence the release of PTEs into the atmosphere in soot (defined here as mostly carbonaceous particulate matter from incomplete combustion of hydrocarbons) during plastic waste combustion, from where they may be inhaled; deposited from the atmosphere into soils and water; or deposited in ash. Although all three studies were intended to improve the evidence base around PTE emissions from open burning, they all neglected to include information such as: the source of plastics,<sup>80</sup> the composition of the plastics;<sup>81</sup> and the type of plastic, beyond the product description.<sup>82</sup> Concentrations of all PTEs were generally low in all studies, but despite the uncertainties, the presence of PTEs, particularly in soot, poses a health risk through inhalation, particularly to those who are in prolonged, close proximity to open burning activities such as participants in the informal recycling sector (IRS).<sup>83</sup> Several PTEs are carcinogenic, and importantly they may accumulate and become concentrated in human tissue.

**Table 4:** Potentially toxic elements (PTEs) observed in laboratory scale combustion of plastic materials.

Ref.	Context	Sampling	Substance	Key findings	USMR#
Valavanidis et al. <sup>80</sup>	GRC	PS, LDPE, HDPE, PP, PET combusted <sup>a</sup> at 600–750 °C	Soot Pb, Cd, Cr, Cu, Ni, Zn	Detected low conc.	
			Ash Pb, Cr, Cd, Cu, Ni, Zn	Detected low conc.	
		PVC combusted <sup>†</sup> at 600–750 °C	Soot Pb, Ni, Cr, Al, Cu	Detected higher conc. compared to other plastics	Q

Ref.	Context	Sampling	Substance	Key findings	USMR <sup>#</sup>
			Ash	Pb, Cr, Ni, Zn	Detected higher conc. compared to other plastics
				Pb, Ni, Cu, Cd, Cr, Zn	Detected in PM from combustion of plastic samples
Park et al. <sup>81</sup>	KOR	Unspecified plastics combusted	Soot	Total PTE	27.09 $\mu\text{g g}^{-1}$ combusted plastic, (compared to 9.7 $\mu\text{g g}^{-1}$ for paper and 8.14 $\mu\text{g g}^{-1}$ for wood) R
		10 samples: rubber soles (n=3), rubber tires (n=2), rubber sole repair compound (n=1), insoles (n=2), printer cartridge (n=1) & PCV tube (n=1)	Soot/ash	Pb	Detected in 80% of samples
Wagner et al. <sup>82</sup>	USA, CHN, VEN		Sb and Cr		Trace or minor conc. S

<sup>a</sup>Samples (n=3 of each polymer) of PS, PVC, LDPE, HDPE, PP, PET (source not stated) combusted at 600-750 °C; ash and soot analyzed for 15 elements (Al, Ba, Mn, Pb, Cr, Cd, Cu, Zn, Ni, Na, Ca, Mg, Fe, Si, P). <sup>#</sup>Uncertainty, strength of knowledge and methodological robustness (USMR) assessed qualitatively. It is assumed that there are no significant concerns unless marked as: Q = source of plastics not stated; R = combustion was under controlled conditions and therefore likely to have underestimated emissions and plastic composition unknown, limiting the usefulness of this analysis; S= study is old and composition of these types of product may have changed since. Only very few results were shown, albeit with very high level of detail. Abbreviations: potentially toxic elements (PTE); Low density polyethylene (LDPE); high density polyethylene (HDPE); polypropylene (PP); polystyrene (PS); polyethylene terephthalate (PET); polyvinyl chloride (PVC).

Very little data is available on the quantity of PTEs emitted from open burning and less so from plastics specifically. The studies by Wiedinmyer et al.<sup>13</sup>, Lemieux et al.<sup>12</sup> and Williams et al.<sup>17</sup> only include data on PTEs for mercury (Hg), however, Park et al.<sup>81</sup> combined their analysis with Korean Environment Ministry data of open burning behavior to estimate total ‘heavy metal’ emissions in Korea. The study used three methods to estimate that between 0.03 and 1.16 metric tons per annum PTEs are emitted each year in Korea based on 24% of houses regularly combusting their waste. However, although direct inhalation of PTEs increases the likelihood of harmful health effects,<sup>83</sup> national PTE emission data does not directly indicate exposure to receptors and thus potential harm to public health.

The identification of PTEs in environmental media such as soils, sediments and water provide an indication of transport and accumulation. For instance, Oyegunle<sup>45</sup> sampled soils at open dumping grounds in Canadian First Nation Communities, finding very high concentrations of As, Cr, Pb, Zn and Cu in all samples that were collected from ground that showed evidence of open burning (**Table 27**). The very high Zn content in these Canadian soils (1,000-10,000  $\mu\text{g g}^{-1}$  soil) is consistent with Park et al.<sup>81</sup> who observed large amounts of Zn in soot from combustion of plastics (max. >65  $\mu\text{g g}^{-1}$ ) compared to paper (max. >18  $\mu\text{g g}^{-1}$ ); wood (max. >15  $\mu\text{g g}^{-1}$ ); and MSW (max. >14  $\mu\text{g g}^{-1}$ ). Whereas Zn is essential for human health and only toxic at very high levels, the concentration identified by Oyegunle<sup>45</sup> was more than 30 times the commercial soil guideline.

**Table 5:** Element concentrations detected in environmental media near historical plastics recycling area; potentially indicating open burning activities.

Ref.	Context	Sampling	Metal	Conc. $\mu\text{g g}^{-1}$			Soil guideline conc. $\mu\text{g g}^{-1}$			
				Mean ( $\pm$ range)	CI	Backg'd	CAN res. / CHN I	CAN com. / CHN II		
Oyegunle <sup>45</sup>	CAN <sup>a</sup>	Soil	Garden Hill	As	5-52 <sup>c</sup>		4.3	12 <sup>d</sup>		
				Cr	100-310 <sup>c</sup>		84.8	64 <sup>d</sup>	87 <sup>e</sup>	
				Pb	120-325 <sup>c</sup>		25.5	140 <sup>d</sup>	260 <sup>e</sup>	
				Zn	1,000-9,200 <sup>c</sup>		151	200 <sup>d</sup>	360 <sup>e</sup>	
				Cu	160-800 <sup>c</sup>		26.5	63 <sup>d</sup>	91 <sup>e</sup>	
				As	21-56 <sup>c</sup>		4.3	12 <sup>d</sup>		
				Cr	320-630 <sup>c</sup>		84.8	64 <sup>d</sup>	87 <sup>e</sup>	
				Pb	130-230 <sup>c</sup>		25.5	140 <sup>d</sup>	260 <sup>e</sup>	
			Wasagamack	Zn	4,500-10,000 <sup>c</sup>		151	200 <sup>d</sup>	360 <sup>e</sup>	
				Cu	320-630 <sup>c</sup>		26.5	63 <sup>d</sup>	91 <sup>e</sup>	
				Zhaogezhuang	Cd	0.418	$\pm 0.547$	0.094	0.2 <sup>f</sup>	0.3 <sup>g</sup>
					Hg	0.603	$\pm 2.224$	0.036	0.15 <sup>f</sup>	0.5 <sup>g</sup>
					Pb	40.4	$\pm 35.5$	21.5	35 <sup>f</sup>	300 <sup>g</sup>
					Sb	3.10	$\pm 3.80$	1.22	- <sup>f</sup>	- <sup>g</sup>
Cd	0.337	$\pm 0.398$	0.094		0.2 <sup>f</sup>	0.3 <sup>g</sup>				
Hg	0.211	$\pm 0.435$	0.036		0.15 <sup>f</sup>	0.5 <sup>g</sup>				
Soils	Daliu	Pb	94.0	$\pm 134$	21.5	35 <sup>f</sup>	300 <sup>g</sup>			
		Sb	3.6	$\pm 6.90$	1.22	- <sup>f</sup>	-			
	Xiaobaihe River	Cd	0.376	$\pm 0.428$						
		Hg	0.320	$\pm 0.786$						
	Renwen Canal	Cd	1.111	$\pm 1.740$						
		Hg	0.204	$\pm 0.285$						
Tang et al. <sup>61</sup>	Hebei, CHN	Sed.	Yincun Ditch <sup>h</sup>	Cd	33.350	$\pm 3.551$				
				Hg	6.402	$\pm 6.951$				
			Road S334 (n=20) and residential areas (n=11)	As	10.1 ( $\pm 1.96$ )		13.6			
				Cd	0.50 ( $\pm 0.60$ )		0.094			
				Cr	112 ( $\pm 22.1$ )		68.3			
				Cu	54.7 ( $\pm 93.9$ )		21.8			
				Hg	0.15 ( $\pm 0.19$ )		0.036			
				Pb	71.8 ( $\pm 106$ )		21.5			
				Sb	10.6 ( $\pm 34.9$ )		1.22			
				Zn	186 ( $\pm 346$ )		78.4			
Tang et al. <sup>84</sup>	Hebei, CHN	Dust								

<sup>a</sup> Garden Hill and Wasagamack First Nations, communities in northern Manitoba, Canada; <sup>b</sup> Wen'an County, northeast Hebei Province, China (main cottage industry plastics recycling area in northern China for >30 yrs); <sup>c</sup> = data approximated from chart; <sup>d</sup> = CCME soil guideline for residential land <sup>85</sup>; <sup>e</sup> = CCME soil guideline for commercial land <sup>85</sup>; <sup>f</sup> = Chinese soil guidelines Class I <sup>86</sup>; <sup>g</sup> = Chinese soil guidelines Class II <sup>86</sup>; <sup>h</sup> = Yincun ditch is the main effluent outlet from a plastic recycling area; abbreviations: residential (res.); commercial (com.); sediments (Sed.); background (Backg'd); confidence interval (CI); concentration (conc.).

The analysis of soils and sediments in Hebei<sup>61</sup> is ambiguous about the specific sources of elements detected, apart from an inference that the concentrations in the Yuncun Ditch may be from production catalysts and other additives rather than waste residues. However, many of the concentrations measured in soils were in excess of the Chinese Soil Guidelines I,<sup>86</sup> indicting widespread deposition from aerosolized particles. Tang et al.<sup>61</sup> extrapolated the identified concentrations to calculate lifetime health risk from these metal concentrations finding a low non-carcinogenic hazard quotient to adults (reporting arithmetic mean: 0.255), but a considerable risk to children living in the area (1.67). Metal concentrations in dusts analyzed by Tang et al.<sup>84</sup> were also greater than background values, with similar average ratio of non-carcinogenic hazard quotient for adults (0.319) and children (2.06).

In general, elements are deposited in soils at low levels when plastics are open burned, however over time these low concentrations may accumulate, posing a risk to children who are more likely to ingest soil. This research has compared a handful of studies that indicate the magnitude of risk from soils contaminated with PTEs from open burning. However, given the prevalence of the activity worldwide, and the potential deleterious and cumulative effects of PTEs in humans, further research should be carried out to develop emission factors that will allow further modelling and extrapolation.

### **3.6. Dioxins and related compounds (DRC)**

‘Dioxins’ is a term used to describe a group of 419 polychlorinated aromatic compounds, described hereafter as ‘dioxins and related compounds’ (DRCs), which can broadly be classified into three groups.<sup>87</sup>

- 75 Polychlorinated dibenzo-p-dioxins (PCDDs)
- 135 polychlorinated dibenzofurans (PCDFs)
- 209 polychlorinated biphenyls (PCBs)

Only around 30 of these substances are considered significantly harmful to health,<sup>88</sup> however, they are persistent in the environment and have a half-life of between 7 and 11 years in the human body.<sup>89</sup> A range of adverse health impacts include short term conditions such as chloracne (severe skin lesions) and longer-term conditions such as cancers; immunological, developmental, neurological, neurodevelopmental and hormonal disruptions; and reproductive issues.<sup>14</sup>

DRCs are found throughout the environment, but particularly in sediments, soils and non-vegetable foodstuffs.<sup>90</sup> More than 90% of dioxins exposure is thought to be through food, mainly meat, fish eggs and dairy products,<sup>91</sup> with only very small quantities being taken up by plants.<sup>92</sup> Dioxins are often formed through incomplete combustion of materials containing chlorine or other halogens,<sup>93</sup> but also, through non-combustion processes such as chlorine bleaching of paper or production of some pesticides and herbicides.<sup>90</sup>

While biological material inevitably contains some chlorine that will lead to dioxin production following combustion, anthropogenic materials such as plastics like PVC and those containing halogenated additives such as BFRs are likely to generate significantly more material per unit of mass combusted.<sup>94, 95</sup>

In 1995, controlled combustion of solid waste in ‘incineration’ plants was reported to be responsible for 69% of dioxin emissions worldwide;<sup>88</sup> however, this is likely to be considerably lower today, with many older incinerations falling out of use, and newer technology being more capable of emissions abatement. For instance, in the UK, MSW incinerators are estimated to be responsible for approximately 1% of total dioxin emissions.<sup>91</sup>

With emissions from incineration largely abated in many countries, open burning has become the focus of increasing attention as a potential major source of DRCs. Fiedler<sup>96</sup> identified open burning of waste as one of the largest sources of DRCs; Zhang et al.<sup>97</sup> reported open burning to contribute 28% (25<sup>th</sup> percentile) to 82% (75<sup>th</sup> percentile) of 61 national dioxin inventories; and Lemieux et al.<sup>12</sup> reported that residential open burning in the US is likely to be one of the main atmospheric sources of DRCs in the country.

To put dioxin release from open burning into context, two authors<sup>44, 98</sup> have modelled emissions, exposure and health impacts from open burning MSW in India and domestic co-incineration of MSW with coal in Poland (**Table 6**). The different types of feedstock modelled make the data hard to compare. However, they both indicate significant numbers of excess cancer cases that could otherwise be avoided. Given that some estimates (**Table 1**) indicate that 13% wt. to 50% wt. of all MSW is open burned, the scenarios modelled by Kumari et al.<sup>44</sup> may be conservative if applied to other regions.

**Table 6:** Modelled risk from dioxin emissions from open burning of MSW.

Ref.	Context	Scenarios	Substance	Excess cancer cases per 100,000 pop.	
Kumari et al. <sup>44</sup>	IND	Ten metropolitan cities	10% MSW open burned	0.20	
			20% MSW open burned	0.38	
		Nationwide	Open burning MSW	10% MSW open burned	0.06
			20% MSW open burned	PCDD/Fs	0.11
Dziubanek et al. <sup>98</sup>	POL	Upper Silesia	Domestic co-incineration of coal and waste	Winter	4.5 to 13.2
			Summer	DRC	0.9 to 2.1

Kumari et al.<sup>44</sup> findings normalized to 100,000 cases using population. Abbreviations: 2, 3, 7, 8-tetrachlorodibenzodioxin (TCDD); polychlorinated dibenzo-p-dioxins and polychlorinated dibenzo-p-furans (PCDD/Fs); dioxins and related compounds (DRC); municipal solid waste (MSW)

Another relevant study by Kunisue et al.<sup>99</sup> analyzed the human breast and cow's milk of subjects living near dumpsites in India, Cambodia, Vietnam, and the Philippines. The study showed that residents in all countries living near dumpsites were exposed to DRCs. In particular in India, where they were exposed to very high levels, most likely through ingestion of milk from cows that have grazed in exposed areas. The study not only inferred open burning as a potential source of DRCs, but also from the leaching of PCBs from legacy e-waste.

Another indicator of open burning or incineration without emissions abatement can be found by analyzing concentrations in soils and sediments as identified in two studies in Korea and China (**Table 7**). Both Im et al.<sup>100</sup> and Ding et al.<sup>101</sup> found a strong correlation between DRCs concentrations in soils and sediments and open burning or unabated incineration. All levels exceeded Canadian soil guideline values<sup>102</sup> (<4 pg toxic equivalency g<sup>-1</sup> dry wt.), except for a single sample collected from the top of a mountain; showing that DRCs can travel considerable distances away from open burning activities.

**Table 7:** Dioxins and related compound (DRC) concentrations in soils in areas surrounding open burning/unabated incineration of solid waste.

Ref.	Context	Samples	Conc. pg g <sup>-1</sup> dry wt. soil					
			PCDFs	PCDDs	PCDD/Fs	I-TEQs		
		Soil (n=24) samples collected from five locations	Group I: >5,000	15,922	5,786	21,708	2,140	*
			Group II: 1,000–5,000	2,078	1,101	3,179	228	*
			Group III: <1,000	127	94.9	222	8.75	*
Ding et al. <sup>103</sup>	Jiangsu, CHN	Sediment samples (n=6) collected from five rivers or ponds	254	424	677	15.3	*	



Ref.	Context	Samples	Conc. pg g <sup>-1</sup> dry wt. soil					
			PCDFs	PCDDs	PCDD/Fs	I-TEQs		
Im et al. <sup>100</sup>	KOR	Soil	Industrial area (n=5)	1,317.2	1,939.8	3,257	46.14	*
			50 m from open burning (illegal) ind. waste incinerator (n=1)	87,249	34,158	121,400	3,720	*
			Top of 200 m mountain (n=1)	11	58	69	0.2	
			Residential, commercial, and rural areas (n=15)	267	295	561	7	*

\* = concentration <4 pg TEQ g<sup>-1</sup> dry wt. soil the Canadian soil guideline values<sup>102</sup>. Abbreviations: polychlorinated dibenzo-p-dioxins (PCDD); polychlorinated dibenzo-p-dioxins and polychlorinated dibenzo-p-furans (PCDD/Fs); polychlorinated dibenzofurans (PCDF)

### 3.7. Bisphenol A (BPA)

Bisphenol A (BPA) is a prolific chemical used in vast quantities (4.6 Mt in 2012)<sup>104</sup> as a principal reactant (monomer in PC and epoxy resin production). It is also used as an antioxidant in some plasticizers; a polymerization inhibitor in PVC; and for synthesizing polysulfones and polyether ketones.<sup>105</sup> BPA is ubiquitous in the natural environment and the subject of monitoring studies across the world.<sup>104</sup> BPA is a known endocrine disruptor as it may increase the division of cells and has reported cytotoxicity toward living tissue.<sup>32</sup> However, there is disagreement in the scientific community about how long BPA lasts in humans (half-life) and the impacts on human health.<sup>106</sup>

Despite considerable attention,<sup>107</sup> the specific risks of BPA to humans and the environment from plastic waste are not sufficiently quantified. Under complete combustion conditions, bisphenol A (BPA) is destroyed; however, Fu et al.<sup>108</sup> compared atmospheric aerosol samples (n=260) from 25 global locations and found significant quantities from between 2 and ~4,500 pg m<sup>-3</sup> (**Table S5, Section S.8**). The study found a strong correlation between BPA levels and 1,3,5-triphenylbenzene; a marker that indicates the open burning of waste. The inference is that if combustion of waste is incomplete, as is the case with domestic waste burning, then BPA will not be destroyed. Therefore open burning is a potential release mechanism for BPA into the atmosphere. Research to date does not quantify the impact of the concentrations reported by Fu et al.<sup>108</sup> on human health, and therefore further study is necessary to determine whether the impact of BPA release from open burning on public health is significant.

### 3.8. Polycyclic aromatic hydrocarbons and particulate matter

When plastics are combusted (i.e. at sufficient air availability) at very high temperatures, for example, >1,000 °C,<sup>109</sup> they mostly form water and carbon dioxide (complete oxidation of carbon), along with other trace chemicals. However, combustion is rarely complete in open

burning, and also other phenomena may occur (evaporation, thermal decomposition, gasification, pyrolysis), resulting in the formation of fine PM, which manifests as solid particles; liquid droplets of PAH; VOCs; tarry hydrocarbons; or a combination of the aforementioned.<sup>110, 111</sup>

### 3.8.1. *Particulate matter (PM)*

Solid PM is often expressed in three general categories based on diameter (**Table S7, Section S.6**). While atmospheric PM can arise from a variety of sources, hydrocarbon combustion is the main one. Wiedinmyer et al.<sup>13</sup> estimated that approximately 24% (12 billion kg) of all global emissions of PM<sub>10</sub> and 29% (10 billion kg) of all emissions of PM<sub>2.5</sub> are a consequence of open burned MSW. PM<sub>2.5</sub> is estimated to contribute to between 13 and 125 urban deaths per 100,000 people worldwide,<sup>112</sup> and as with other emissions reported, disaggregating the contribution made by plastics has not been done.

Black carbon, a subset category of PM, is noteworthy because several studies have suggested it is significantly worse for health than other types of PM.<sup>113-115</sup> Black carbon does not only pose a health risk. Inherently, burning plastic waste contributes to climate change because plastics are comprised of fossil carbon, but this impact is compounded when plastic waste is combusted incompletely, because the black carbon aerosols that are generated have two distinct effects. Firstly, black carbon has its own direct radiative forcing effect and secondly, black carbon reduces albedo on snow and ice, particularly in polar regions as it reduces the amount of heat being reflected from the earth's surface.<sup>14, 116</sup> Consequently, black carbon may have as much as 5,000 times the global warming potential of carbon dioxide.<sup>39</sup>

Two studies<sup>81, 82</sup> identified in this review calculated emissions factors for plastic wastes (**Table 8**). However, both are of limited use for extrapolation, because the waste sources used are either unspecified in the case of Park et al.<sup>81</sup> or highly specific in the case of Wagner et al.<sup>82</sup>. Additionally, the Wagner & Caraballo study is more than 20 years old and it is possible that the compositions of the various rubber materials investigated have changed over the years. One noteworthy finding from the Park et al.<sup>81</sup> research is that PM emissions from plastic waste items were much greater than for paper and wood that were also quantified (data not shown), indicating that plastic waste is a key contributor to PM emissions from MSW.

**Table 8:** Particulate matter (PM) emission factors for plastic waste.

Ref.	Year	Context	Samples	Particle size ( $\mu\text{m}$ )	Conc. $\mu\text{g g}^{-1}$ plastic		
					Mean	Range / SD	
Park et al. <sup>81</sup>	2013	KOR	Unspecified plastics	TPM	1,700	(+1,600 -1,200)	
				PM <sub>10</sub>	1,500	(+/- 900)	
				PM <sub>2.5</sub>	500	(+350 -400)	
				VEN	Rubber sole	5,712	SD 2,485
Wagner et al. <sup>82</sup>	1997	USA	Rubber sole	CHN	Rubber sole	8,961	SD 2,910
				USA	Rubber sole	6,638	SD 1,438
				USA	Rubber tire (body)	18,105	SD 1,756
				TPM (smoke)			

Abbreviations: total particulate matter (TPM); standard deviation (SD); particulate matter < 10  $\mu\text{m}$  (PM<sub>10</sub>); particulate matter < 2.5  $\mu\text{m}$  (PM<sub>2.5</sub>).

Barabad et al.<sup>117</sup> investigated the effect of heating rate on PM emissions from combusted LDPE samples (**Table S 8, Section S.7**), finding that increasing the heat source increased the quantity of PMs emitted from the samples in all particle size groups. While Barabad et al.<sup>117</sup>, Park et al.<sup>81</sup>, and Wagner et al.<sup>82</sup> all provide useful indications of PM emissions, their findings are not sufficient to construct a coherent global model of emissions from open burning of plastic waste; enabling a more robust calculation of the overall impact of plastics on public health.

### 3.8.2. Polycyclic aromatic hydrocarbons (PAHs)

Organic compounds comprised of at least two aromatic rings, joined together, PAHs are generally carcinogenic, with a toxic potency indication of 1 ng m<sup>-3</sup> benzo(a)pyrene equivalent (BaP<sub>eq</sub>) concentration leading to 8.7 cases of cancer per one million people exposed.<sup>69</sup> Although only around 100 have been studied and characterized, it is thought that millions of PAH species may be theoretically generated.<sup>118</sup>

PAHs have become prevalent throughout the natural environment and open burning of waste is thought to be a significant source, being responsible for possibly 39% (334 million kg) of global atmospheric emissions.<sup>13</sup> Most PAHs persist in the environment after being deposited from atmospheric aerosol phase into soils and sediments where they can accumulate.<sup>119, 120</sup>

The majority of open burning emissions studies characterize and quantify emissions from MSW rather than plastic waste specifically. As PAHs are produced through gasification and pyrolysis of biomass and other combustible materials, as well as fossil-engineered plastics, further research is needed to characterize and quantify emissions from plastics specifically. We identified two research outputs that compare PAH concentrations in aerosolized

particulate matter and ash from combusted plastics (**Table 9**). The samples of PS and PVC both showed considerably higher PAH emissions compared to the other plastics, as did the mixed samples analyzed by Simoneit et al.<sup>66</sup>; possibly influenced by the high PVC content. The PE bag (likely LDPE) from the US showed the lowest concentration of PAHs, with almost undetectable emissions.

**Table 9:** Total polycyclic aromatic hydrocarbon (PAH) emissions from plastic waste combustion.

Ref.	Context	Samples	Polymer	Conc. $\mu\text{g g}^{-1}$ total particulate matter	
				Soot	Ash
Valavanidis et al. <sup>80</sup>	GRC	Spongy light insulating material	PS	1,023	427
		Plastic bottles	PVC	1,205	1,002
		Shopping bags and food wrap	LDPE	517	355
		Trash bags	HDPE	721	355
		Food containers	PP	592	250
		Beverage bottles	PET	363	319
		New shopping bags	PE (likely LDPE)	548.8	
		'Roadside trash'	PE 17.3%, PET 29.7%, PVC 39.3%, PS 2.9%, unidentified 10.8%	910.7	
Simoneit et al. <sup>66</sup>	CHL	'Landfill trash'		523.6	
	USA	New shopping bags	PE (likely LDPE)	4	

Abbreviations: low density polyethylene (LDPE); high density polyethylene (HDPE); polypropylene (PP); polystyrene (PS); polyethylene terephthalate (PET); polyvinyl chloride (PVC); concentrations (conc.).

Analysis of plastics purchased in Korea<sup>81</sup> provided PAH emission factors of  $1.94 \mu\text{g}$  total particulate matter  $\text{g}^{-1}$  'combusted plastic waste' and  $14.35 \mu\text{g PM}_{2.5} \text{g}^{-1}$  'combusted plastic waste' which could enable extrapolation for future modelling efforts; however, the source and composition of the plastic waste was not stated, limiting the usefulness of the results.

Combined with PM solids, PAHs may have a different or potentially greater deleterious effect on health compared to PM alone.<sup>121</sup> Particulates such as  $\text{PM}_{2.5}$  PAH are carcinogenic and mutagenic;<sup>122</sup> can cause immunological and developmental impairments; and may lead to reproductive abnormalities.<sup>123</sup> Shivani et al.<sup>69</sup> estimated that 'plastic and waste burning' (combined) contributes 13.5% of all  $\text{PM}_{2.5}$  generated and 5.1% of lung cancer cases (5,000 per million population) or 255 cases per million in Indian cities.

Air pollution is thought to be responsible for as many as 3.7 million deaths per year<sup>17</sup> and speculatively, PAHs from open burning of plastic waste may make a contribution towards them. However, disaggregating PAH emissions produced when plastic waste is open burned from the multitude of other potential sources is problematic. Moreover, the paucity of reliable

emission factors combined with poor knowledge of the amount of plastic waste being burned, means that accurate modelling of risk to human populations is almost impossible with the current state of knowledge. This lack of data, combined with the potential hazardousness of PAHs, emphasizes the need for specific characterization of emissions from the open burning of plastic waste suitable for improving conceptual and quantified modelling of PAH emissions.

### **3.9. Risk characterization for open burning of plastic waste**

The semi-quantitative risk assessment of plastic waste and open burning resulted in the identification of 18 hazard-pathway-receptor combinations involving seven substance groups detailed in **Table 10** and summarized and ranked in **Section S.3, Table S 4**. Members of the IRS were identified as being particularly vulnerable to emissions exposure from open burning as they often work on dumpsites that have been deliberately or accidentally ignited<sup>124</sup>. Moreover, waste pickers have been reported to burn residues of plastics and other wastes that are no longer required, either deliberately for fuel, warmth or insect repellence, or as a method of disposal. PM, PAHs, DRCs were all identified as posing a high risk to the IRS working in those contexts due to their sustained proximity. Both PAHs and PM were identified as posing a high risk to the population in areas where open burning takes place. These scores are evidenced through several studies that have quantified carcinogenic and non-carcinogenic risk.

DRCs were also assessed to pose a high carcinogenic risk to the population, not only through direct inhalation from the atmosphere but also through deposition to soil and subsequent uptake in food or livestock. Children were assessed to be susceptible to high risk from DRCs, as they are likely to ingest larger quantities of soil that they enjoy placing in their mouths.

Though there is evidence for BPAs near-ubiquity on earth, the evidence to link the concentrations observed to negative health outcomes is insufficient to carry out an indicative risk assessment such as that presented here. Therefore, BPA hazards were not scored in this assessment.

**Table 10:** Risk characterization summary for open burning of secondary plastics.

Haz.	Pathway	Receptor	Geog.	Evidence & justification for risk assessment	Notable material/polymer/substance	Uncertainty (aleatoric & epistemic)	Receptor vulnerability	L	S	R	Global receptor context
	Atmosphere/ inhalation; uptake in food	Population		<ul style="list-style-type: none"> <li>Analysis of BFR conc. in plastic wastes and subsequent modelling of emissions in China indicate widespread release of BFRs into the environment from incineration.<sup>57</sup> Soil<sup>60</sup> and dust<sup>61</sup> concentrations indicate deposition from ambient atmosphere which may lead to uptake into crops.</li> </ul>	PS, PVC, PE	<ul style="list-style-type: none"> <li>Limited direct evidence to assess occupational and public health risk from BFRs, so can only be inferred through qualitative adductive reasoning.</li> </ul>	<ul style="list-style-type: none"> <li>Population living in proximity to open burning activities may be more exposed.</li> </ul>	3	4	12	Population living without comprehensive waste collection in LIMICs
	Soil/ mouthing	Children		<ul style="list-style-type: none"> <li>Analysis of BFR conc. in plastic waste and subsequent modelling of emissions in China indicate widespread release of BFRs into the environment from incineration plants in China.<sup>57</sup></li> <li>Informal workers likely to be disproportionately affected as participants operate in proximity to significant open burning.</li> </ul>	PS, PVC, PE	<ul style="list-style-type: none"> <li>No direct evidence of exposure to children, so inferred risk through qualitative adductive reasoning.</li> </ul>	<ul style="list-style-type: none"> <li>Children are more vulnerable to exposure due to lower body weight and propensity for mouthing.</li> </ul>	3	4	12	Children living in proximity to open burning in LIMICs
BFR	Atmosphere/ inhalation	Workers (informal)	CHN	<ul style="list-style-type: none"> <li>Analysis of BFR conc. in plastic waste and subsequent modelling of emissions in China indicate widespread release of BFRs into the environment from incineration plants in China.<sup>57</sup></li> <li>Informal workers likely to be disproportionately affected as participants operate in proximity to significant open burning.</li> </ul>	PS, PVC, PE	<ul style="list-style-type: none"> <li>No direct evidence of exposure to informal workers, so inferred risk through qualitative adductive reasoning.</li> </ul>	<ul style="list-style-type: none"> <li>IRS workers are acutely vulnerable to open burning at close range as they often work on dumpsites set on fire, and burn as a method of residue disposal or to recover other materials such as metals, and even to keep away mosquitos.</li> </ul>	4	5	20	IRS workers on dumpsites and where residues are burned in LIMICs
		Population		<ul style="list-style-type: none"> <li>Ambient atmospheric concentrations in open burning areas comparable<sup>69, 70</sup> with concentrations inside extrusion plants<sup>73</sup> and 2–10 times greater than maximum values reported in Paris<sup>71</sup> where limited open burning takes place.</li> <li>50-60% of phthalate contributions in open burning areas modelled to originate from plastic waste burning.<sup>69, 70</sup></li> </ul>		<ul style="list-style-type: none"> <li>Though atmospheric levels higher in exposed areas, not contextualized with air guidelines.</li> </ul>	<ul style="list-style-type: none"> <li>Population living in proximity to open burning activities may be more exposed.</li> </ul>	2	4	8	Population living without comprehensive waste collection in LIMICs
Phth.	Atmosphere/ inhalation	Workers (informal)	IND, CHN	<ul style="list-style-type: none"> <li>Ambient atmospheric concentrations in open burning areas comparable<sup>69, 70</sup> with concentrations inside extrusion plants<sup>73</sup> and 2–10 times greater than maximum values reported in Paris<sup>71</sup> where limited open burning takes place.</li> <li>50-60% of phthalate contributions in open burning areas modelled to originate from plastic waste burning.<sup>69, 70</sup></li> </ul>	PVC, PC-ABS, K-resin	<ul style="list-style-type: none"> <li>Though atmospheric levels higher in exposed areas, not contextualized with air guidelines.</li> <li>Risk not quantified.</li> </ul>	<ul style="list-style-type: none"> <li>IRS workers are acutely vulnerable to open burning at close range as they often work on dumpsites set on fire, and burn as a method of residue disposal or to recover other materials such as metals, and even to keep away mosquitos.</li> </ul>	3	4	12	IRS workers on dumpsites and where residues are burned in LIMICs

Haz.	Pathway	Receptor	Geog.	Evidence & justification for risk assessment	Notable material/polymer/substance	Uncertainty (aleatoric & epistemic)	Receptor vulnerability	L	S	R	Global receptor context
	Soil/ mouthing	Children		<ul style="list-style-type: none"> <li>Deposition to soil and waterbodies<sup>125</sup> indicated in plastics recycling area could be a consequence of extrusion and/or open burning.</li> </ul>		<ul style="list-style-type: none"> <li>No direct evidence of exposure to children, so inferred risk through qualitative adductive reasoning.</li> </ul>	<ul style="list-style-type: none"> <li>Children are more vulnerable to exposure due to lower body weight and propensity for mouthing.</li> </ul>	2	4	8	Children living in proximity to open burning in LIMICs
		Population	IND, CHN, JPN, NZL				<ul style="list-style-type: none"> <li>Potentially entire global urban population vulnerable.</li> </ul>	na	na	na	Population living without comprehensive waste collection in LIMICs
BPA	Atmosphere/ inhalation	Workers (informal)	Indian, Atlantic Oceans and Polar Regions	<ul style="list-style-type: none"> <li>Causal inference between open burning of plastics and high BPA concentrations in the atmosphere,<sup>108</sup> however then health implications of these concentrations are unknown.</li> </ul>	Epoxy resin & PC	<ul style="list-style-type: none"> <li>Although link established between high atmospheric concentrations and open burning identified, the health impacts of these concentrations are unknown.</li> </ul>	<ul style="list-style-type: none"> <li>IRS workers are acutely vulnerable to open burning at close range as they often work on dumpsites set on fire, and burn as a method of residue disposal or to recover other materials such as metals, and even to keep away mosquitos.</li> </ul>	na	na	na	IRS workers on dumpsites and where residues are burned in LIMICs
	Atmosphere /inhalation; soil/uptake in food	Population				<ul style="list-style-type: none"> <li>PTE emissions pose a risk to health and the environment, resulting in a variety of negative health impacts and potential to accumulate in biota. However exposure from open burning plastic waste not quantified and risk not calculated.</li> </ul>	<ul style="list-style-type: none"> <li>Population living in proximity to open burning activities may be more exposed.</li> </ul>	na	na	na	Population living without comprehensive waste collection in LIMICs
PTE	Atmosphere/ inhalation	Workers (informal)	GRC, KOR, USA, CHN, VEN, CAN	<ul style="list-style-type: none"> <li>Laboratory emissions observed<sup>80-82</sup> show metals are emitted when plastics are combusted, albeit in generally low concentrations.</li> <li>Reasons to believe that PTEs are emitted through open burning by assessing evidence of concentrations in soil dust and sediment.<sup>45, 61, 84</sup></li> </ul>	Higher conc. detected in PVC waste compared to polyolefins and PET sampled <sup>80</sup>	<ul style="list-style-type: none"> <li>Although not quantified, the potential health risk through inhalation, in the case of prolonged, close proximity to open burning activities sufficient to score through qualitative adductive reasoning.</li> </ul>	<ul style="list-style-type: none"> <li>IRS workers are acutely vulnerable to open burning at close range as they often work on dumpsites set on fire, and burn as a method of residue disposal or to recover other materials such as metals, and even to keep away mosquitos.</li> </ul>	3	4	12	IRS workers on dumpsites and where residues are burned in LIMICs

Haz.	Pathway	Receptor	Geog.	Evidence & justification for risk assessment	Notable material/polymer/substance	Uncertainty (aleatory & epistemic)	Receptor vulnerability	L	S	R	Global receptor context
	Soil/ mouthing	Children		<ul style="list-style-type: none"> <li>• Soil concentrations of PTEs linked directly to open burning<sup>45</sup> and inferred circumstantially.<sup>61, 84</sup></li> <li>• Non-carcinogenic hazard quotient for children at mean 1.67<sup>61</sup> and 2.06<sup>84</sup> for soil and dusts respectively.</li> </ul>		<ul style="list-style-type: none"> <li>• Though based on specific conditions in one area of China, it is reasonable to assume similar conditions throughout other areas of LIMICs where similar industry exists.</li> </ul>	<ul style="list-style-type: none"> <li>• Children are more vulnerable to exposure due to lower body weight and propensity for mouthing.</li> </ul>	3	4	12	Children living in proximity to open burning in LIMICs
DRC	Atmosphere /inhalation; soil/uptake in food	Population	IND, POL, CHN, KOR	<ul style="list-style-type: none"> <li>• Open burning is considered the largest source of dioxin release.<sup>12, 96, 97</sup> The contribution made by plastic waste is from mainly PVC and brominated flame retardants<sup>93</sup> which contain the relevant halogens but the proportion of emissions from plastic waste isn't well reported.</li> <li>• Emissions are linked to open burning activities in cow's milk, human breast milk<sup>99</sup> and soil.<sup>100, 103</sup></li> <li>• Estimated population cancer rates reported from MSW Kumari et al.<sup>44</sup> and domestic co-combustion with coal<sup>98</sup> - ca. 0.2 - 13 cases of cancer per 100,000 people - not allocated for plastic.</li> </ul>	Halogenated plastics such as PVC, PVB, BFRs	<ul style="list-style-type: none"> <li>• Not possible to disaggregate the contribution of plastic waste to these emissions.</li> </ul>	<ul style="list-style-type: none"> <li>• Population living in proximity to open burning activities may be more exposed.</li> </ul>	3	4	12	Population living without comprehensive waste collection in LIMICs
	Atmosphere /inhalation	Workers (informal)					<ul style="list-style-type: none"> <li>• IRS workers are acutely vulnerable to open burning at close range as they often work on dumpsites set on fire, and burn as a method of residue disposal or to recover other materials such as metals, and even to keep away mosquitos.</li> </ul>	4	4	16	IRS workers on dumpsites and where residues are burned in LIMICs
	Soil/ mouthing	Children		<ul style="list-style-type: none"> <li>• Soil concentrations<sup>100, 103</sup> in open burning areas exceeded Canadian soil guidelines by several thousand times in many cases posing significant risk to children living near open burning activities.</li> </ul>			<ul style="list-style-type: none"> <li>• Children are more vulnerable to exposure due to lower body weight and propensity for mouthing.</li> </ul>	4	4	16	Children living in proximity to open burning in LIMICs

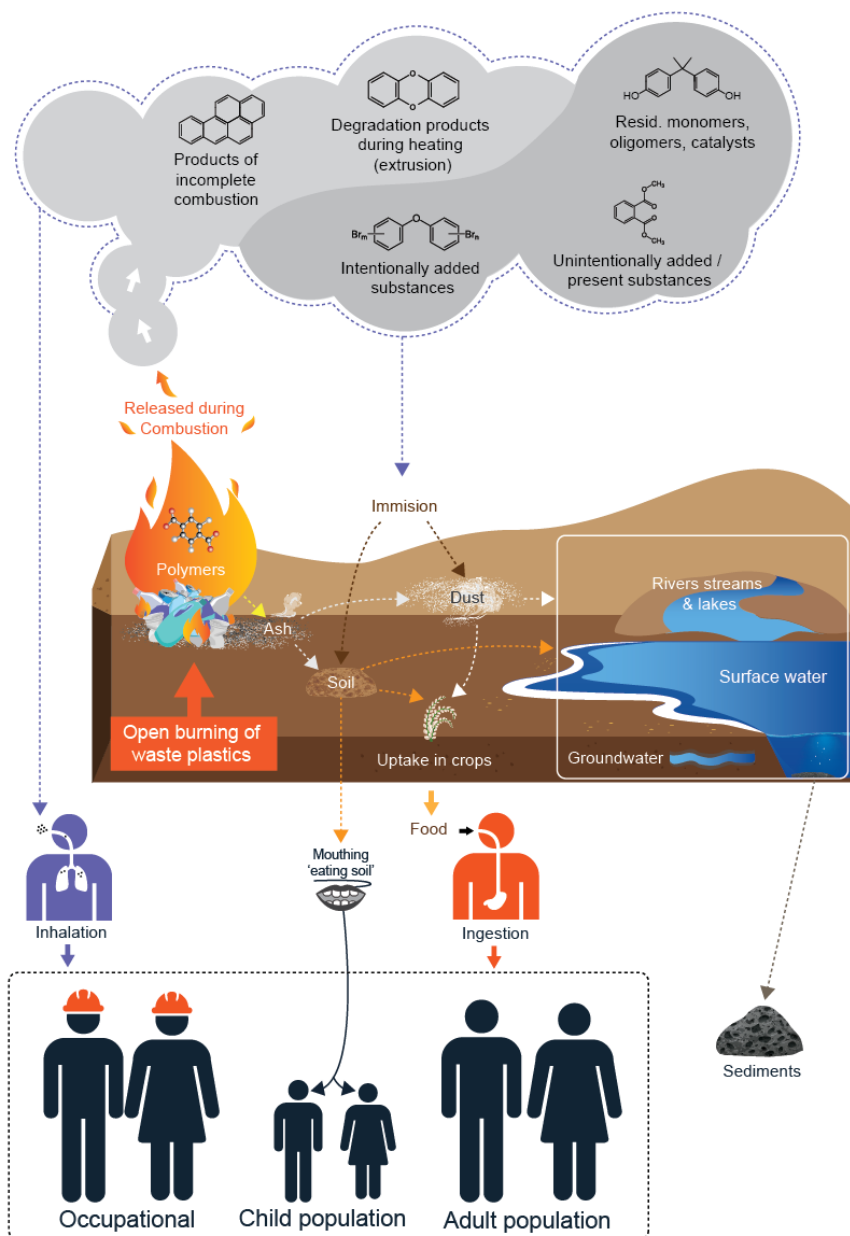


Haz.	Pathway	Receptor	Geog.	Evidence & justification for risk assessment	Notable material/polymer/substance	Uncertainty (aleatoric & epistemic)	Receptor vulnerability	L	S	R	Global receptor context
	Atmosphere/inhalation; soil/uptake in food	Population	KOR, VEN, USA, CHN	<ul style="list-style-type: none"> <li>Though the contribution of plastic waste is not known, open burning of all MSW is estimated<sup>13</sup> to contribute 24% of PM<sub>10</sub> and 29% of PM<sub>2.5</sub> emissions.</li> <li>Deaths from PM<sub>2.5</sub> are estimated at between 13 and 125 per 100,000 people in urban areas, therefore uncontrolled plastic waste combustion is likely to be a significant contributor.</li> </ul>			<ul style="list-style-type: none"> <li>Population living in proximity to open burning activities may be more exposed.</li> </ul>	4	4	16	Population living without comprehensive waste collection in LIMICs
PM	Atmosphere/inhalation	Workers (informal)	KOR, VEN, USA, CHN		All plastics at risk of open burning	<ul style="list-style-type: none"> <li>Not possible to disaggregate the contribution of plastic waste to these emissions.</li> </ul>	<ul style="list-style-type: none"> <li>IRS workers are acutely vulnerable to open burning at close range as they often work on dumpsites set on fire, and burn as a method of residue disposal or to recover other materials such as metals, and even to keep away mosquitos.</li> </ul>	4	4	16	IRS workers on dumpsites and where residues are burned in LIMICs
		Population					<ul style="list-style-type: none"> <li>Population living in proximity to open burning activities may be more exposed.</li> </ul>	4	4	16	Population living without comprehensive waste collection in LIMICs
PAH	Atmosphere/inhalation	Workers (informal)	GRC, CHL, USA, KOR	<ul style="list-style-type: none"> <li>Most PAHs are carcinogenic with a toxic potency indication of 1 ng m<sup>-3</sup> BaPeq concentration leading to 8.7 cases of cancer per million people exposed.<sup>69</sup></li> </ul>	PVC, PS	<ul style="list-style-type: none"> <li>Not possible to disaggregate the contribution of plastic waste to these emissions</li> </ul>	<ul style="list-style-type: none"> <li>IRS workers are acutely vulnerable to open burning at close range as they often work on dumpsites set on fire, and burn as a method of residue disposal or to recover other materials such as metals, and even to keep away mosquitos.</li> </ul>	4	4	16	IRS workers on dumpsites and where residues are burned in LIMICs

Abbreviations: likelihood (L); severity (S); risk (R); hazard being assessed (Haz.); phthalates (Phth.); geographical research context (Geo.); not available (na); polystyrene (PS); polycarbonate (PC); polyethylene terephthalate (PET); polyethylene (PE); polycarbonate/acrylonitrile-butadiene-styrene (PC-ABS); styrene-butadiene copolymer (K-resin); polyvinyl chloride (PVC); polyvinyl butyral (PVB); brominated flame retardants (BFR); low income and middle income countries (LIMIC); informal recycling sector (IRS); phthalates (Phth.); bisphenol A (BPA); potentially toxic elements (PTE); dioxins and related compounds (DRC); circa (ca.); brominated flame retardants (BFR); particulate matter (PM); particulate matter < 10 µm (PM<sub>10</sub>); particulate matter < 2.5 µm (PM<sub>2.5</sub>); polycyclic aromatic hydrocarbons (PAH); benzo(a)pyrene equivalent (BaPeq).

#### 4. Conclusions and prospects

Increasing quantities of uncollected solid waste will result in a continuation of the need to self-manage discarded material that is generated by billions of households and business across LIMICs in the coming decades. The choices are stark, burn, bury, deposit on land or into water. If the most pessimistic estimates are to be believed, nearly a billion tons of solid waste is burned every year in open, uncontrolled fires, much of which is plastic waste. When plastic waste is combusted, a range of unbound substances of concern (BFRs, PTEs, BPA, and phthalates), added either intentionally or unintentionally, may escape destruction and be released into nearby media such as the atmosphere and surrounding land. In addition, there are substances and particles that are produced as a result of chemical transformations that take place in variable, low temperature conditions that are inevitable within open, uncontrolled fires (PM, PAHs and DRCs). Here, we have systematically collected and arranged key sources that evidence these emissions, the risks they pose to human health and the pathways through which the harm is realized, creating a generalised conceptual description (**Figure 2**) – but only 20 publications made it to our inclusion list; and this despite not including upfront rejection based on research quality criteria.



**Figure 2:** Graphical overview of the hazard exposure conceptual model (source – pathway – receptor) associated with open (uncontrolled) burning of plastic waste (from substances contained and combustion products), as indicated by the review of 20 literature sources eligible for the inclusion criteria in this systematic review.

Our risk-based approach highlighted 18 main hazard-pathway-receptor combinations, seven of which were scored as having high harm potential and six which were scored as having medium/high harm potential. However, though we are confident with these indicative conclusions, the underlying research-base is extremely limited in several key areas, as directly implied by the paucity of relevant research. Not least, we found little

strong evidence to confidently estimate the mass of plastic waste or/and mixed waste that is openly burned, beyond simple calculations that rely on bold assumptions. Only one city-scale study into open burning based its findings on observed behavior, whilst the majority were reliant on surveys, but more commonly, expert judgement or industrial opinion that was subject to potential bias.

Overwhelmingly, the scores indicated a higher risk of harm to human health in LIMICs compared to HICs. Within these the most sensitive receptor was waste pickers (informal waste reclaimers, IRS), a large global workforce of proud day to day survivors and entrepreneurs who operate without safe systems of work and who may carry out approximately half of all the world's recycling collections <sup>11</sup>. Despite this tremendous contribution to the global circular economy, waste pickers work in conditions that directly threaten their health along with the health of their families, who have few choices about where they live and work.

The quality of information we reviewed was assessed via an uncertainty, strength of knowledge and methodological robustness matrix and was found to be mixed, with only a subset of clearly presented studies for example identifying substance concentrations occurring in environmental media and humans. Overall, many of the studies fell short of identifying or attempting to identify causal linkages between the occurrence of a substance and receptor response, inferring exposure pathways rather than demonstrating a clear and verifiable connection between system components. In many studies, the source of substances identified in environmental media or humans was not determined, leaving some doubt over whether the source was waste plastics processing or some other confounding source.

Resultant risks to human health may be comparatively small, yet not sufficiently quantified to be dismissed. Most worryingly, without substantial action, the health of those exposed to open burning of plastics, mainly waste pickers and wider communities in geographic proximity could possibly be considerably negatively affected. The potential risks posed to human health from open burning of plastic waste is alarmingly higher than any other considered in our analysis; yet, it remains largely ignored and substantially under-researched.

## **CRedit author statement**

**Ed Cook:** Conceptualization; Data curation; Formal Analysis; Investigation; Methodology; Project administration; Resources; Validation; Visualization; Writing – original draft; Writing – review & editing. **Costas A. Velis:** Conceptualization; Data curation; Formal Analysis; Funding acquisition; Investigation; Methodology; Project administration; Resources; Software; Supervision; Validation; Visualization; Writing – original draft; Writing – review & editing.

## **Acknowledgements**

We are grateful to the Technical Advisory Board of the Engineering X Safer End of Engineered Life programme, of the Royal Academy of Engineering for their steering and insightful feedback, especially on early versions of this research and manuscript. The Programme Board chaired by Professor William Powrie & the Academy staff, especially Hazel Ingham and Shaarad Sharma who provided support throughout the process. Ad hoc advice, guidance and criticism was provided by multiple stakeholder representatives, as listed in the relevant Academy report. We are grateful to Michiel Derks (University of Leeds) for supporting preliminary data collection and Nick Rigas, (D-Waste) for the presentation of infographics. The research communicated and opinions expressed here are authors' alone.

## **Financial**

We gratefully acknowledge funding from the Royal Academy of Engineering. This work was commissioned as part of the Engineering X Safer End of Engineered Life programme which is funded by Lloyd's Register Foundation. Engineering X is an international collaboration, founded by the Royal Academy of Engineering and Lloyd's Register Foundation, that brings together some of the world's leading problem-solvers to address the great challenges of our age.

## 5. References

- (1) Lau, W. W. Y.; Shiran, Y.; Bailey, R. M.; Cook, E.; Stuchtey, M. R.; Koskella, J.; Velis, C. A.; Godfrey, L.; Boucher, J.; Murphy, M. B.; Thompson, R. C.; Jankowska, E.; Castillo, A. C.; Pilditch, T. D.; Dixon, B.; Koerselman, L.; Kosior, E.; Favoino, E.; Gutberlet, J.; Baulch, S.; Atreya, M. E.; Fischer, D.; He, K. K.; Petit, M.; Sumaila, U. R.; Neil, E.; Ochocki, M.; Lawrence, K.; Palardy, J. E., Evaluating Scenarios Toward Zero Plastic Pollution. *Science* **2020**, (369), 1455–1461.
- (2) Geyer, R.; Jambeck, J. R.; Law, K. L., Production, use, and fate of all plastics ever made. **2017**, *3*, (7), e1700782.
- (3) Kummu, M.; Varis, O., The world by latitudes: A global analysis of human population, development level and environment across the north-south axis over the past half century. *Appl. Geogr.* **2011**, *31*, (2), 495-507.
- (4) Xanthos, D.; Walker, T. R., International policies to reduce plastic marine pollution from single-use plastics (plastic bags and microbeads): A review. *Marine Pollution Bulletin* **2017**, *118*, (1), 17-26.
- (5) da Costa, J. P.; Mouneyrac, C.; Costa, M.; Duarte, A. C.; Rocha-Santos, T., The Role of Legislation, Regulatory Initiatives and Guidelines on the Control of Plastic Pollution. *Frontiers in Environmental Science* **2020**, *8*.
- (6) Karasik, R.; Vegh, T.; Pickle, A.; Viridin, J.; Diana, Z.; Bering, J.; Caldas, J.; Rittschof, D. *20 Years of Government Responses to the Global Plastic Pollution Problem: The Plastics Policy Inventory.*; Duke University: Durham, USA, 2020.
- (7) Johansson, N.; Velis, C.; Corvellec, H., Towards clean material cycles: Is there a policy conflict between circular economy and non-toxic environment? *Waste Manage. Res.* **2020**, *38*, (7), 705-707.
- (8) Wilson, D. C.; Rodic, L.; Modak, P.; Soos, R.; Carpintero, A.; Velis, K.; Iyer, M.; Simonett, O., *Global waste management outlook*. United Nations Environment Programme, 2015.
- (9) Forbid, G. T.; Ghogomu, J. N.; Busch, G.; Frey, R., Open waste burning in Cameroonian cities: An environmental impact analysis. *Environmentalist* **2011**, *31*, (3), 254-262.
- (10) Kawamura, K.; Pavuluri, C., New Directions: Need for better understanding of plastic waste burning as inferred from high abundance of terephthalic acid in South Asian aerosols. *Atmos Environ* **2010**, *44*, (39), 5320-5321.
- (11) Cook, E.; Velis, C. A. *Global review on safer end of engineered life*; London, UK, 2020.
- (12) Lemieux, P. M.; Lutes, C. C.; Santoianni, D. A., Emissions of organic air toxics from open burning: a comprehensive review. *Progress in Energy and Combustion Science* **2004**, *30*, (1), 1-32.
- (13) Wiedinmyer, C.; Yokelson, R. J.; Gullett, B. K., Global Emissions of Trace Gases, Particulate Matter, and Hazardous Air Pollutants from Open Burning of Domestic Waste. *Environmental Science & Technology* **2014**, *48*, (16), 9523-9530.

- (14) Cogut, A. *Open burning of waste: A global health disaster*; R20 Regions of Climate Action Geneva, Switzerland, 2016.
- (15) Kodros, J. K.; Wiedinmyer, C.; Ford, B.; Cucinotta, R.; Gan, R.; Magzamen, S.; Pierce, J. R., Global burden of mortalities due to chronic exposure to ambient PM<sub>2.5</sub> from open combustion of domestic waste. *Environmental Research Letters* **2016**, *11*, (12), 124022.
- (16) Lim, S. S.; Vos, T.; Flaxman, A. D.; Danaei, G.; Shibuya, K.; Adair-Rohani, H.; AlMazroa, M. A.; Amann, M.; Anderson, H. R.; Andrews, K. G.; Aryee, M.; Atkinson, C.; Bacchus, L. J.; Bahalim, A. N.; Balakrishnan, K.; Balmes, J.; Barker-Collo, S.; Baxter, A.; Bell, M. L.; Blore, J. D.; Blyth, F.; Bonner, C.; Borges, G.; Bourne, R.; Boussinesq, M.; Brauer, M.; Brooks, P.; Bruce, N. G.; Brunekreef, B.; Bryan-Hancock, C.; Bucello, C.; Buchbinder, R.; Bull, F.; Burnett, R. T.; Byers, T. E.; Calabria, B.; Carapetis, J.; Carnahan, E.; Chafe, Z.; Charlson, F.; Chen, H.; Chen, J. S.; Cheng, A. T.-A.; Child, J. C.; Cohen, A.; Colson, K. E.; Cowie, B. C.; Darby, S.; Darling, S.; Davis, A.; Degenhardt, L.; Dentener, F.; Des Jarlais, D. C.; Devries, K.; Dherani, M.; Ding, E. L.; Dorsey, E. R.; Driscoll, T.; Edmond, K.; Ali, S. E.; Engell, R. E.; Erwin, P. J.; Fahimi, S.; Falder, G.; Farzadfar, F.; Ferrari, A.; Finucane, M. M.; Flaxman, S.; Fowkes, F. G. R.; Freedman, G.; Freeman, M. K.; Gakidou, E.; Ghosh, S.; Giovannucci, E.; Gmel, G.; Graham, K.; Grainger, R.; Grant, B.; Gunnell, D.; Gutierrez, H. R.; Hall, W.; Hoek, H. W.; Hogan, A.; Hosgood, H. D.; Hoy, D.; Hu, H.; Hubbell, B. J.; Hutchings, S. J.; Ibeanusi, S. E.; Jacklyn, G. L.; Jasrasaria, R.; Jonas, J. B.; Kan, H.; Kanis, J. A.; Kassebaum, N.; Kawakami, N.; Khang, Y.-H.; Khatibzadeh, S.; Khoo, J.-P.; Kok, C.; Laden, F.; Lalloo, R.; Lan, Q.; Lathlean, T.; Leasher, J. L.; Leigh, J.; Li, Y.; Lin, J. K.; Lipshultz, S. E.; London, S.; Lozano, R.; Lu, Y.; Mak, J.; Malekzadeh, R.; Mallinger, L.; Marcenes, W.; March, L.; Marks, R.; Martin, R.; McGale, P.; McGrath, J.; Mehta, S.; Memish, Z. A.; Mensah, G. A.; Merriman, T. R.; Micha, R.; Michaud, C.; Mishra, V.; Hanafiah, K. M.; Mokdad, A. A.; Morawska, L.; Mozaffarian, D.; Murphy, T.; Naghavi, M.; Neal, B.; Nelson, P. K.; Nolla, J. M.; Norman, R.; Olives, C.; Omer, S. B.; Orchard, J.; Osborne, R.; Ostro, B.; Page, A.; Pandey, K. D.; Parry, C. D. H.; Passmore, E.; Patra, J.; Pearce, N.; Pelizzari, P. M.; Petzold, M.; Phillips, M. R.; Pope, D.; Pope, C. A.; Powles, J.; Rao, M.; Razavi, H.; Rehfuss, E. A.; Rehm, J. T.; Ritz, B.; Rivara, F. P.; Roberts, T.; Robinson, C.; Rodriguez-Portales, J. A.; Romieu, I.; Room, R.; Rosenfeld, L. C.; Roy, A.; Rushton, L.; Salomon, J. A.; Sampson, U.; Sanchez-Riera, L.; Sanman, E.; Sapkota, A.; Seedat, S.; Shi, P.; Shield, K.; Shivakoti, R.; Singh, G. M.; Sleet, D. A.; Smith, E.; Smith, K. R.; Stapelberg, N. J. C.; Steenland, K.; Stöckl, H.; Stovner, L. J.; Straif, K.; Straney, L.; Thurston, G. D.; Tran, J. H.; Van Dingenen, R.; van Donkelaar, A.; Veerman, J. L.; Vijayakumar, L.; Weintraub, R.; Weissman, M. M.; White, R. A.; Whiteford, H.; Wiersma, S. T.; Wilkinson, J. D.; Williams, H. C.; Williams, W.; Wilson, N.; Woolf, A. D.; Yip, P.; Zielinski, J. M.; Lopez, A. D.; Murray, C. J. L.; Ezzati, M., A comparative risk assessment of burden of disease and injury attributable to 67 risk factors and risk factor clusters in 21 regions, 1990–2010: a systematic analysis for the Global Burden of Disease Study 2010. *The Lancet* **2012**, *380*, (9859), 2224-2260.
- (17) Williams, M.; Gower, R.; Green, J.; Whitebread, E.; Lenkiewicz, Z.; Schröder, D. P. *No Time to Waste: Tackling the plastic pollution crisis before it's too late*; Tearfund, Fauna & Flora International (FFI), WasteAid and The Institute of Development Studies (IDS). Teddington, UK, 2019.

- (18) World Health Organization Air pollution: Key facts [https://www.who.int/en/news-room/fact-sheets/detail/ambient-\(outdoor\)-air-quality-and-health](https://www.who.int/en/news-room/fact-sheets/detail/ambient-(outdoor)-air-quality-and-health) (6 December),
- (19) Institute for Health Metrics and Evaluation, Global Burden of Disease Database. In *Global Health Data Exchange*, Institute for Health Metrics and Evaluation (IHME): Washington, USA, 2019.
- (20) Gower, R.; Green, J.; Williams, M. *The Burning Question: Will Companies Reduce Their Plastic Use?*; 2020.
- (21) Moher, D.; Liberati, A.; Tetzlaff, J.; Altman, D. G.; The Prisma Group, Preferred reporting items for systematic reviews and meta-analyses: The PRISMA statement. *PLOS Medicine* **2009**, *6*, (7), e1000097.
- (22) Cook, E.; Velis, C. A.; Derks, M., Plastic waste processing: A systematic review of risks to occupational and public health from legacy substances and extrusion. *engrXiv* **2020**.
- (23) Cooper, C.; Booth, A.; Varley-Campbell, J.; Britten, N.; Garside, R., Defining the process to literature searching in systematic reviews: a literature review of guidance and supporting studies. *BMC Medical Research Methodology* **2018**, *18*, (1), 85.
- (24) Health and Safety Executive Information and services. <https://www.hse.gov.uk/>
- (25) International Labour Organization ILOSTAT: The leading source of labour statistics. <https://ilostat.ilo.org/>
- (26) The World Bank World Bank Open Data: Free and open access to global development data. <https://data.worldbank.org/>
- (27) World Health Organization World Health Data Platform. <https://www.who.int/data>
- (28) Hunter, P. R.; Payment, P.; Ashbolt, N.; Bartram, J., Assessment of risk. In *Assessing microbial safety of drinking water: Improving approaches and methods*, Organisation for Economic Cooperation and Development and World Health Organisation: Paris, France, 2003; pp 79-109.
- (29) Kaya, G. K.; Ward, J. R.; Clarkson, P. J., A framework to support risk assessment in hospitals. *International Journal for Quality in Health Care* **2018**, *31*, (5), 393-401.
- (30) World Health Organization *Rapid Risk Assessment of Acute Public Health Events*; WHO/HSE/GAR/ARO/2012.1; World Health Organization: Geneva, Switzerland, 2012.
- (31) Burns, C. J.; LaKind, J. S.; Mattison, D. R.; Alcala, C. S.; Branch, F.; Castillo, J.; Clark, A.; Clougherty, J. E.; Darney, S. P.; Erickson, H.; Goodman, M.; Greiner, M.; Jurek, A. M.; Miller, A.; Rooney, A. A.; Zidek, A., A matrix for bridging the epidemiology and risk assessment gap. *Global Epidemiology* **2019**, *1*, 100005.
- (32) Hahladakis, J. N.; Velis, C. A.; Weber, R.; Iacovidou, E.; Purnell, P., An overview of chemical additives present in plastics: Migration, release, fate and environmental impact during their use, disposal and recycling. *Journal of Hazardous Materials* **2018**, *344*, 179-199.



- (33) Guendehou, G. H. S.; Koch, M.; Hockstad, L.; Pipatti, R.; Yamada, M., Waste incineration and open burning of waste. In *IPCC guidelines for national greenhouse gas inventories: Waste* Eggleston H.S., B. L., Miwa K., Ngara T., Tanabe K., Ed. Intergovernmental Panel on Climate Change: Japan, 2006; Vol. 5, pp 5.1-5.26.
- (34) National Environmental Engineering Research institute *Air Quality Assessment, Emissions Inventory and Source Apportionment Studies: Mumbai*; Central Pollution Control Board, New Delhi: Mumbai, 2010.
- (35) Nagpure, A. S.; Ramaswami, A.; Russell, A., Characterizing the Spatial and Temporal Patterns of Open Burning of Municipal Solid Waste (MSW) in Indian Cities. *Environmental Science & Technology* **2015**, *49*, (21), 12904-12912.
- (36) Pansuk, J.; Junpen, A.; Garivait, S., Assessment of air pollution from household solid waste open burning in Thailand. *Sustainability (Switzerland)* **2018**, *10*, (7), 2553.
- (37) Chanchampee, P. Methods for evaluation of waste management in Thailand in consideration of policy, environmental impact and economics. Technical University of Berlin, Berlin, 2010.
- (38) Premakumara, D. G. J.; Menikpura, S. N. M.; Singh, R. K.; Hengesbaugh, M.; Magalang, A. A.; Ildefonso, E. T.; Valdez, M. D. C. M.; Silva, L. C., Reduction of greenhouse gases (GHGs) and short-lived climate pollutants (SLCPs) from municipal solid waste management (MSWM) in the Philippines: Rapid review and assessment. *Waste Management* **2018**, *80*, 397-405.
- (39) Reyna-Bensusan, N.; Wilson, D. C.; Smith, S. R., Uncontrolled burning of solid waste by households in Mexico is a significant contributor to climate change in the country. *Environmental Research* **2018**, *163*, 280-288.
- (40) Bundhoo, Z. M. A., Solid waste management in least developed countries: current status and challenges faced. *Journal of Material Cycles and Waste Management* **2018**, *20*, (3), 1867-1877.
- (41) Christian, T. J.; Yokelson, R. J.; Cárdenas, B.; Molina, L. T.; Engling, G.; Hsu, S. C., Trace gas and particle emissions from domestic and industrial biofuel use and garbage burning in central Mexico. *Atmos. Chem. Phys.* **2010**, *10*, (2), 565-584.
- (42) US Environmental Protection Agency *Residential Household Waste Open Burning*; US Environmental Protection Agency North Carolina, USA, 2001.
- (43) Ghana Statistical Service Ghana - Population and Housing Census 2000: H14 Method of disposal of solid waste (Solid) File: Housing. <https://www2.statsghana.gov.gh/nada/index.php/catalog/3/variable/V279> (11 September),
- (44) Kumari, K.; Kumar, S.; Rajagopal, V.; Khare, A.; Kumar, R., Emission from open burning of municipal solid waste in India. *Environmental Technology* **2017**, 1-14.
- (45) Oyegunle, A., Solid waste management practices in two northern Manitoba first nations communities: community perspectives on the issues and solutions. **2016**.
- (46) Cuadra, S. *Child labour and health hazards: Chemical exposure and occupational injuries in Nicaraguan children working in a waste disposal site*; 9163176785; Citeseer: Lund, Sweden, 2005.

- (47) Rim-Rukeh, A., An Assessment of the Contribution of Municipal Solid Waste Dump Sites Fire to Atmospheric Pollution. *Open Journal of Air Pollution* **2014**, 3, (3), 53-60.
- (48) Lenkiewicz, Z. Open burning of waste at a dumpsite. <https://www.youtube.com/watch?v=oqFLtdKas0g> (11 June),
- (49) Human Rights Watch Lives at risk: Open burning of waste in lebanon. <https://www.youtube.com/watch?v=XgaCJWrpIuU> (11 June),
- (50) TracingThought "Disappearing" Trash: Is Bali Burning Their Landfills? <https://www.youtube.com/watch?v=11D9T5dYLjA>
- (51) Chandrashekar, G.; Satyanarayan, S. Dump. Burn. Pollute. Who cares in indifferent Bengaluru? <https://www.deccanchronicle.com/nation/current-affairs/170516/dump-burn-pollute-who-cares-in-indifferent-bengaluru.html> (11 June),
- (52) Doshi, V. The Kolkata dump that's permanently on fire: 'Most people die by 50'. <https://www.theguardian.com/cities/2016/oct/24/difficult-breathe-inside-kolkata-india-rubbish-dump-permanently-fire> (11 June),
- (53) Birnbaum Linda, S.; Staskal Daniele, F., Brominated flame retardants: cause for concern? *Environmental Health Perspectives* **2004**, 112, (1), 9-17.
- (54) The International Bromine Council Brominate Flame Retardants: TBBPA in electrical & electronic equipment. <https://www.bsef.com/uses-innovations/brominated-flame-retardants/>
- (55) Sharkey, M.; Harrad, S.; Abou-Elwafa Abdallah, M.; Drage, D. S.; Berresheim, H., Phasing-out of legacy brominated flame retardants: The UNEP Stockholm Convention and other legislative action worldwide. *Environment International* **2020**, 144.
- (56) Secretariat of the Stockholm Convention Hexabromocyclododecane. <http://chm.pops.int/Implementation/Alternatives/AlternativestoPOPs/ChemicalslistedinAnnexA/HBCD/tabid/5861/Default.aspx> (4 June),
- (57) Hong-Gang, N.; Shao-You, L.; Ting, M.; Hui, Z., Brominated flame retardant emissions from the open burning of five plastic wastes and implications for environmental exposure in China. *Environmental Pollution* **2016**, 214, 70-76.
- (58) European Union, Directive 2011/65/EU of the European Parliament and of the Council on the restriction of the use of certain hazardous substances in electrical and electronic equipment. In *L174*, 88–110, Off. J. Eur. Union, Ed. 2011.
- (59) European Union, Commission Regulation (EU) 2016/460 of 30 March 2016 amending Annexes IV and V to Regulation (EC) No 850/2004 of the European Parliament and of the Council on persistent organic pollutants. In *L 80/17*, 17–24, Off. J. Eur. Union, Ed. 2016.
- (60) Tang, Z.; Huang, Q.; Cheng, J.; Yang, Y.; Yang, J.; Guo, W.; Nie, Z.; Zeng, N.; Jin, L., Polybrominated diphenyl ethers in soils, sediments, and human hair in a plastic waste recycling area: A neglected heavily polluted area. *ENVIRON. SCI. TECHNOL.* **2014**, 48, (3), 1508-1516.
- (61) Tang, Z. W.; Zhang, L. Z.; Huang, Q. F.; Yang, Y. F.; Nie, Z. Q.; Cheng, J. L.; Yang, J.; Wang, Y. W.; Chai, M., Contamination and risk of heavy metals in soils and

- sediments from a typical plastic waste recycling area in North China. *Ecotox Environ Safe* **2015**, *122*, 343-351.
- (62) Annamalai, J.; Namasivayam, V., Determination of effect of pH and storage temperature on leaching of phthalate esters from plastic containers by ultrasound-assisted dispersive liquid–liquid micro-extraction. *Journal of Food Measurement and Characterization* **2017**, *11*, (4), 2222-2232.
- (63) Lu, S.; Yang, D.; Ge, X.; Li, L.; Zhao, Y.; Li, C.; Ma, S.; Yu, Y., The internal exposure of phthalate metabolites and bisphenols in waste incineration plant workers and the associated health risks. *Environment International* **2020**, *145*, 106101.
- (64) Růžicková, J.; Raclavská, H.; Raclavský, K.; Juchelková, D., Phthalates in PM2.5 airborne particles in the Moravian-Silesian Region, Czech Republic. *Perspectives in Science* **2016**, *7*, 178-183.
- (65) Gao, D.-W.; Wen, Z.-D., Phthalate esters in the environment: A critical review of their occurrence, biodegradation, and removal during wastewater treatment processes. *Science of The Total Environment* **2016**, *541*, 986-1001.
- (66) Simoneit, B. R. T.; Medeiros, P. M.; Didyk, B. M., Combustion products of plastics as indicators for refuse burning in the atmosphere. *ENVIRON. SCI. TECHNOL.* **2005**, *39*, (18), 6961-6970.
- (67) Petrovičová, I.; Kolena, B.; Šidlovská, M.; Pilka, T.; Wimmerová, S.; Trnovec, T., Occupational exposure to phthalates in relation to gender, consumer practices and body composition. *Environmental Science and Pollution Research* **2016**, *23*, (23), 24125-24134.
- (68) Wang, X.; Wang, L.; Zhang, J. F.; Yin, W. J.; Hou, J.; Zhang, Y. J.; Hu, C.; Wang, G. Y.; Zhang, R.; Tao, Y.; Yuan, J., Dose-response relationships between urinary phthalate metabolites and serum thyroid hormones among waste plastic recycling workers in China. *Environmental Research* **2018**, *165*, 63-70.
- (69) Shivani; Gadi, R.; Sharma, S. K.; Mandal, T. K., Seasonal variation, source apportionment and source attributed health risk of fine carbonaceous aerosols over National Capital Region, India. *Chemosphere* **2019**, *237*.
- (70) Gadi, R.; Shivani; Sharma, S. K.; Mandal, T. K., Source apportionment and health risk assessment of organic constituents in fine ambient aerosols (PM2.5): A complete year study over National Capital Region of India. *Chemosphere* **2019**, *221*, 583-596.
- (71) Teil, M. J.; Blanchard, M.; Chevreuil, M., Atmospheric fate of phthalate esters in an urban area (Paris-France). *Science of The Total Environment* **2006**, *354*, (2), 212-223.
- (72) Thuren, A.; Larsson, P., Phthalate esters in the Swedish atmosphere. *Environmental Science & Technology* **1990**, *24*, (4), 554-559.
- (73) Huang, D. Y.; Zhou, S. G.; Hong, W.; Feng, W. F.; Tao, L., Pollution characteristics of volatile organic compounds, polycyclic aromatic hydrocarbons and phthalate esters emitted from plastic wastes recycling granulation plants in Xingtian Town, South China. *Atmos Environ* **2013**, *71*, 327-334.

- (74) Health and Safety Executive *EH40/2005 Workplace exposure limits: Containing the list of workplace exposure limits for use with the Control of Substances Hazardous to Health Regulations 2002 (as amended)* UK, 2020.
- (75) Whitt, M.; Vorst, K.; Brown, W.; Baker, S.; Gorman, L., Survey of heavy metal contamination in recycled polyethylene terephthalate used for food packaging. *J Plast Film Sheeting* **2012**, 29, (2), 163-173.
- (76) World Health Organization Arsenic. <https://www.who.int/news-room/fact-sheets/detail/arsenic#:~:text=Long%2Dterm%20exposure%20to%20arsenic,increase%20deaths%20in%20young%20adults>.
- (77) Pourret, O.; Hursthouse, A., It's Time to Replace the Term "Heavy Metals" with "Potentially Toxic Elements" When Reporting Environmental Research. *International Journal of Environmental Research and Public Health* **2019**, 16, (22).
- (78) Bichinho, K. M.; Pires, G. P.; Stedile, F. C.; dos Santos, J. H. Z.; Wolf, C. R., Determination of catalyst metal residues in polymers by X-ray fluorescence. *Spectrochimica Acta Part B: Atomic Spectroscopy* **2005**, 60, (5), 599-604.
- (79) Eriksen, M. K.; Pivnenko, K.; Olsson, M. E.; Astrup, T. F., Contamination in plastic recycling: Influence of metals on the quality of reprocessed plastic. *Waste Management* **2018**, 79, 595-606.
- (80) Valavanidis, A.; Iliopoulos, N.; Gotsis, G.; Fiotakis, K., Persistent free radicals, heavy metals and PAHs generated in particulate soot emissions and residue ash from controlled combustion of common types of plastic. *Journal of Hazardous Materials* **2008**, 156, (1-3), 277-284.
- (81) Park, Y. K.; Kim, W.; Jo, Y. M., Release of harmful air pollutants from open burning of domestic municipal solid wastes in a metropolitan area of Korea. *Aerosol Air Qual. Res.* **2013**, 13, (4), 1365-1372.
- (82) Wagner, J. P.; Caraballo, S. A., Toxic species emissions from controlled combustion of selected rubber and plastic consumer products. *Polym.-Plast. Technol. Eng.* **1997**, 36, (2), 189-224.
- (83) Leung, A. O. W.; Duzgoren-Aydin, N. S.; Cheung, K. C.; Wong, M. H., Heavy Metals Concentrations of Surface Dust from e-Waste Recycling and Its Human Health Implications in Southeast China. *Environmental Science & Technology* **2008**, 42, (7), 2674-2680.
- (84) Tang, Z. W.; Huang, Q. F.; Yang, Y. F.; Nie, Z. Q.; Cheng, J. L.; Yang, J.; Wang, Y. W.; Chai, M., Polybrominated diphenyl ethers (PBDEs) and heavy metals in road dusts from a plastic waste recycling area in north China: implications for human health. *Environmental Science and Pollution Research* **2016**, 23, (1), 625-637.
- (85) Canadian Council of Ministers of the Environment (CCME) *Canadian Soil Quality Guidelines for the Protection of Environmental and Human Health: Summary Tables*; Canada, 1999.
- (86) Ministry of Environmental Protection *GB15618-1995 Soil Environmental Quality Standard*; China, 1995.
- (87) Zhang, M.; Buekens, A.; Li, X. J. W.; Valorization, B., Dioxins from Biomass Combustion: An Overview. **2017**, 8, (1), 1-20.

- (88) Bates, M. *Managing landfill site fires in Northamptonshire*; University College Northampton: Northampton, 2004.
- (89) Mukherjee, A.; Debnath, B.; Ghosh, S. K., A Review on Technologies of Removal of Dioxins and Furans from Incinerator Flue Gas. *Procedia Environmental Sciences* **2016**, *35*, 528-540.
- (90) World Health Organization Dioxins and their effects on human health. <https://www.who.int/news-room/fact-sheets/detail/dioxins-and-their-effects-on-human-health> (12 December),
- (91) Maynard, R. L.; Walton, H.; Pollitt, F.; Fielder, R. *The impact on health of emissions to air from municipal waste incinerators* Health Protection Agency: Didcot, UK, 2010.
- (92) Leśków, A.; Nawrocka, M.; Łatkowska, M.; Tarnowska, M.; Galas, N.; Matejuk, A.; Całkosiński, I., Can contamination of the environment by dioxins cause craniofacial defects? *Hum. Exp. Toxicol.* **2019**, *38*, (9), 1014-1023.
- (93) Estrellan, C. R.; Lino, F., Toxic emissions from open burning. *Chemosphere* **2010**, *80*, (3), 193-207.
- (94) Hedman, B.; Näslund, M.; Nilsson, C.; Marklund, S., Emissions of Polychlorinated Dibenzodioxins and Dibenzofurans and Polychlorinated Biphenyls from Uncontrolled Burning of Garden and Domestic Waste (Backyard Burning). *Environmental Science & Technology* **2005**, *39*, (22), 8790-8796.
- (95) Sakai, S.-i.; Watanabe, J.; Honda, Y.; Takatsuki, H.; Aoki, I.; Futamatsu, M.; Shiozaki, K., Combustion of brominated flame retardants and behavior of its byproducts. *Chemosphere* **2001**, *42*, (5), 519-531.
- (96) Fiedler, H., National PCDD/PCDF release inventories under the Stockholm Convention on Persistent Organic Pollutants. *Chemosphere* **2007**, *67*, (9), S96-S108.
- (97) Zhang, T.; Fiedler, H.; Yu, G.; Ochoa, G. S.; Carroll Jr, W. F.; Gullett, B. K.; Marklund, S.; Touati, A., Emissions of unintentional persistent organic pollutants from open burning of municipal solid waste from developing countries. *Chemosphere* **2011**, *84*, (7), 994-1001.
- (98) Dziubanek, G.; Marchwińska, E.; Hajok, I.; Piekut, A., Inhalation exposure to dioxins and dl-PCBs depending on the season in upper silesia, Poland: A pilot study. *Cent. Eur. J. Public Health* **2016**, *24*, (2), 115-119.
- (99) Kunisue, T.; Watanabe, M.; Iwata, H.; Subramanian, A.; Monirith, I.; Minh, T. B.; Baburajendran, R.; Tana, T. S.; Viet, P. H.; Prudente, M.; Tanabe, S. J. A. o. E. C.; Toxicology, Dioxins and Related Compounds in Human Breast Milk Collected Around Open Dumping Sites in Asian Developing Countries: Bovine Milk as a Potential Source. **2004**, *47*, (3), 414-426.
- (100) Im, S. H.; Kannan, K.; Giesy, J. P.; Matsuda, M.; Wakimoto, T., Concentrations and profiles of polychlorinated dibenzo-p-dioxins and dibenzofurans in soils from Korea. *ENVIRON. SCI. TECHNOL.* **2002**, *36*, (17), 3700-3705.
- (101) Ding, L.; Cai, B.; Wang, S.; Qu, C., Concentrations, spatial distributions, and congener profiles of polychlorinated dibenzo-p-dioxins and dibenzofurans around

- original plastic solid waste recovery sites in China. *Environmental Pollution* **2018**, *242*, (Pt A), 692-699.
- (102) Canadian Council of Ministers of the Environment *Canadian soil quality guidelines for the protection of environmental and human health: Dioxins and Furans.*; Winnipeg, Canada, 1999.
- (103) Ding, L.; Cai, B. J.; Wang, S.; Qu, C. S., Concentrations, spatial distributions, and congener profiles of polychlorinated dibenzo-p-dioxins and dibenzofurans around original plastic solid waste recovery sites in China. *Environmental Pollution* **2018**, *242*, (Pt A), 692-699.
- (104) Morin, N.; Arp, H. P. H.; Hale, S. E., Bisphenol A in Solid Waste Materials, Leachate Water, and Air Particles from Norwegian Waste-Handling Facilities: Presence and Partitioning Behavior. *Environmental Science & Technology* **2015**, *49*, (13), 7675-7683.
- (105) Xu, S. Y.; Zhang, H.; He, P. J.; Shao, L. M., Leaching behaviour of bisphenol A from municipal solid waste under landfill environment. *Environmental Technology* **2011**, *32*, (11), 1269-1277.
- (106) Corrales, J.; Kristofco, L. A.; Steele, W. B.; Yates, B. S.; Breed, C. S.; Williams, E. S.; Brooks, B. W., Global Assessment of Bisphenol A in the Environment: Review and Analysis of Its Occurrence and Bioaccumulation. *Dose Response* **2015**, *13*, (3), 1559325815598308-1559325815598308.
- (107) Le, H. H.; Carlson, E. M.; Chua, J. P.; Belcher, S. M., Bisphenol A is released from polycarbonate drinking bottles and mimics the neurotoxic actions of estrogen in developing cerebellar neurons. *Toxicol Lett* **2008**, *176*, (2), 149-156.
- (108) Fu, P.; Kawamura, K., Ubiquity of bisphenol A in the atmosphere. *Environmental Pollution* **2010**, *158*, (10), 3138-3143.
- (109) Darivakis, G. S.; Howard, J. B.; Peters, W. A., Release Rates of Condensables and Total Volatiles from Rapid Devolatilization of Polyethylene and Polystyrene. *Combust Sci Technol* **1990**, *74*, (1-6), 267-281.
- (110) Wakefield, J. C. *A Toxicological Review of the Products of Combustion*; Didcot, UK, 2010.
- (111) Hartzell, G. E., Overview of combustion toxicology. *Toxicology* **1996**, *115*, (1), 7-23.
- (112) Anenberg, S. C.; Achakulwisut, P.; Brauer, M.; Moran, D.; Apte, J. S.; Henze, D. K., Particulate matter-attributable mortality and relationships with carbon dioxide in 250 urban areas worldwide. *Sci Rep* **2019**, *9*, (1), 11552.
- (113) Cassee, F. R.; Héroux, M.-E.; Gerlofs-Nijland, M. E.; Kelly, F. J., Particulate matter beyond mass: recent health evidence on the role of fractions, chemical constituents and sources of emission. *Inhalation toxicology* **2013**, *25*, (14), 802-812.
- (114) Grahame, T. J.; Klemm, R.; Schlesinger, R. B., Public health and components of particulate matter: The changing assessment of black carbon. *Journal of the Air & Waste Management Association* **2014**, *64*, (6), 620-660.

- (115) Tuomisto, J. T.; Wilson, A.; Evans, J. S.; Tainio, M., Uncertainty in mortality response to airborne fine particulate matter: Combining European air pollution experts. *Reliability Engineering & System Safety* **2008**, *93*, (5), 732-744.
- (116) Bond, T. C.; Doherty, S. J.; Fahey, D. W.; Forster, P. M.; Berntsen, T.; DeAngelo, B. J.; Flanner, M. G.; Ghan, S.; Kärcher, B.; Koch, D.; Kinne, S.; Kondo, Y.; Quinn, P. K.; Sarofim, M. C.; Schultz, M. G.; Schulz, M.; Venkataraman, C.; Zhang, H.; Zhang, S.; Bellouin, N.; Guttikunda, S. K.; Hopke, P. K.; Jacobson, M. Z.; Kaiser, J. W.; Klimont, Z.; Lohmann, U.; Schwarz, J. P.; Shindell, D.; Storelvmo, T.; Warren, S. G.; Zender, C. S., Bounding the role of black carbon in the climate system: A scientific assessment. **2013**, *118*, (11), 5380-5552.
- (117) Barabad, M. L. M.; Jung, W.; Versoza, M. E.; Lee, Y. I.; Choi, K.; Park, D., Characteristics of particulate matter and volatile organic compound emissions from the combustion of waste vinyl. *International Journal of Environmental Research and Public Health* **2018**, *15*, (7).
- (118) Choi, H.; Harrison, R.; Komulainen, H.; Saborit, J. M. D., Polycyclic aromatic hydrocarbons. In *WHO Guidelines for Indoor Air Quality: Selected Pollutants*, World Health Organization: Geneva, Switzerland, 2010.
- (119) Agarwal, T.; Khillare, P. S.; Shridhar, V.; Ray, S., Pattern, sources and toxic potential of PAHs in the agricultural soils of Delhi, India. *Journal of Hazardous Materials* **2009**, *163*, (2), 1033-1039.
- (120) Peng, C.; Chen, W.; Liao, X.; Wang, M.; Ouyang, Z.; Jiao, W.; Bai, Y., Polycyclic aromatic hydrocarbons in urban soils of Beijing: Status, sources, distribution and potential risk. *Environmental Pollution* **2011**, *159*, (3), 802-808.
- (121) Pehcec, G.; Jakovljević, I., Carcinogenic Potency of Airborne Polycyclic Aromatic Hydrocarbons in Relation to the Particle Fraction Size. *International journal of environmental research and public health* **2018**, *15*, (11), 2485.
- (122) Chen, Y.; Li, X.; Zhu, T.; Han, Y.; Lv, D., PM2.5-bound PAHs in three indoor and one outdoor air in Beijing: Concentration, source and health risk assessment. *Science of The Total Environment* **2017**, *586*, 255-264.
- (123) Etchie, T. O.; Sivanesan, S.; Etchie, A. T.; Adewuyi, G. O.; Krishnamurthi, K.; George, K. V.; Rao, P. S., The burden of disease attributable to ambient PM2.5-bound PAHs exposure in Nagpur, India. *Chemosphere* **2018**, *204*, 277-289.
- (124) Ferronato, N.; Torretta, V., Waste Mismanagement in Developing Countries: A Review of Global Issues. **2019**, *16*, (6), 1060.
- (125) Wang, Q.; Wang, L.; Chen, X.; Rao, K. M.; Lu, S. Y.; Ma, S. T.; Jiang, P.; Zheng, D.; Xu, S. Q.; Zheng, H. Y.; Wang, J. S.; Yu, Z. Q.; Zhang, R.; Tao, Y.; Yuan, J., Increased urinary 8-hydroxy-2'-deoxyguanosine levels in workers exposed to di-(2-ethylhexyl) phthalate in a waste plastic recycling site in China. *Environmental Science and Pollution Research* **2011**, *18*, (6), 987-996.