

Pandemic and bills: The impact of COVID-19 on energy usage of schools in South Africa

J.A. Samuels^a, S.S. Grobbelaar^{b,c}, M.J. Booysen^{a,*}

^aDepartment of Electrical & Electronic Engineering, Stellenbosch University, South Africa

^bDepartment of Industrial Engineering, Stellenbosch University, South Africa

^cDST-NRF Centre of Excellence in Scientometrics and Science, Technology and Innovation Policy (SciSTIP), Stellenbosch University, South Africa

Abstract

The COVID-19 pandemic continues to wreak havoc on global operations and economies. Inadvertently, lockdowns and working from home have reduced the daily carbon footprints of transport and office buildings. A beneficial consequence of these reductions is the ability to measure the differential demand of occupants, to benchmark the base load of these buildings, and identify opportunities for efficiency improvements. In this paper we evaluate the change in energy demand in five public schools in South Africa with changes in occupancy due to the COVID-19-imposed lockdowns.

Keywords: School electricity; Energy usage; Smart meter; School energy profiles; COVID-19; Pandemic; School responses

1. Introduction

South Africa's public (non-private) schools face many challenges, especially budgetary constraints, and even more so for schools in the lower four of the five affluence quintiles [1]. These budgetary constraints are compounded by the rising cost of water and energy, of which schools are heavy and often wasteful users [1–3]. Given the lack of financial resources in the educational domain and the troubled state of basic education in the country, any reduction in wasteful expenses could be put to good use, for example to help to pay teacher salaries or invest in educational infrastructure. Since the country's predominant source of energy is electricity generated by its state-owned behemoth, Eskom, burning fossil fuels by, any reduction in usage also results in a reduction in greenhouse emissions.

One of the unintended consequences of the COVID-19 pandemic's lockdowns has been a reduction in greenhouse emissions, albeit temporarily [4]. This reduction was driven by the lower energy requirements in large office buildings and also by diminished transportation requirements as people worked from home. Moreover, as economic activity subsequently slumped, energy consumption reduced further, with commensurate reductions in the environmental impact [4]. The pandemic also provided an opportunity to evaluate the nexus and resulting consequences of the pandemic, energy systems and climate change [5].

The South African government have responded to the pandemic with a focus on provision of healthcare capacity and short-term fiscal interventions to counter the multi-sectoral decline in economic activity. With regards to the education sector, school closures were implemented, due to lockdown regulations, and measures were taken to ensure learner education could proceed safely as far as practically possible [6].

Similar to large office blocks, a reduction was expected in schools' energy usage with unoccupied or partially occupied schools. However, with children out of school and effectively being home-schooled, and with employment uncertainty, some parents were either unable or unwilling to pay school fees. In some instances, teachers, support and other (i.e. administrative) staff had to be laid off, especially when their salaries were paid by the governing board and therefore dependent on the payment of parents' contributions.

1.1. Schools in South Africa and their COVID-19 response

Each of South Africa's nine provinces has a dedicated education department guided by the national education ministry. The provincial education departments are responsible for public schooling for grades R to 12. South

*Corresponding author

Email address: mjbooyesen@sun.ac.za (M.J. Booysen)

Table 1: COVID time table

2020 Dates	Description	Level	Ref
18 March	Schools closed early due to COVID-19 in country	–	[11]
19 March	Regulation 6 - closure of schools until April 15th (eventually the 1st of July)	–	[12]
26 March	National lockdown Level 5 for 21 days	5	[13]
9 April	Two-week extension on 21-day Lockdown	5	[14]
1 May	National lockdown Level 4 lockdown 1st of May. Phased re-opening of schools to be provided.	5	[15]
13 May	Need for re-organisation of schools stated	4	[16]
24 May	Resumption of classes for grades 7 and 12 learners planned for 1 June	4	[17]
29 May	National lockdown Level 3	4	[18]
1 June	School reopening postponed. Staff could report to work on 1 June.	3	[19]
25 June	Provisional reopening of school at 50% capacity announced with move to digital platforms. Grade R, 1, 2, 3, 6, 10 and 11 to return 6th of July.	3	[20]
12 July	Call to increase ventilation in schools.	3	[21]
23 July	Reopening of schools. Grade 7 and 12 returned on the 8th of June. On 6 July grades R, 6 and 11 returned. However, schools closed between 27 July and 24 August.	3	[22]
17 Aug	National lockdown Level 2	2	[23]
20 Sep	National lockdown Level 1	1	[24]

Africa’s public schools are categorised into five quintiles based on the affluence of the surrounding areas, where one is least affluent and five is most affluent. Quintile four and five schools constitute fee-paying schools, whose parents contribute financially towards the school’s funds through fees. Quintile three schools tend to be fee-paying, however these schools are situated in poorer communities. Quintile one and two schools constitute no-fee schools, whose parents are considered too poor to contribute to school funds through fees. The government contribute more per student for poorer schools.

Covid-19 induced lockdowns in South Africa meant that the movement of citizens and normal day operations of the public and private sectors were restricted with the exceptions of health services. There were levels to the lockdowns ranging from level 5 to level 0 - decreasing in restrictions and freedom of movement.

During the Level 5 lockdowns (the most restrictive stage of lock down due to COVID – discussed in detail in section 1.2), schools were also closed, with learners reverting to remote learning [7, 8]. Despite being met with some opposition, they eventually reopened with social distancing enforced. Initially, this resulted in partial occupancy, as temporary revised education plans were adopted – learners attended schools every second or third day, and well-resourced schools could use blended learning. Furthermore, mobile classrooms were used by the Western Cape Education Department (WCED) to allow schools to operate with 1.5m physical separation, which reduced classrooms to partial capacity. Similar to non-educational buildings, this partial occupancy due to physical distancing was expected to have an impact on the building energy usage [9]. Changes in energy uses could be due to factors such as changes in occupancy of students and staff, usage of items, and COVID-induced arrangements (i.e. the usage of more classrooms due to social distances, phased re-opening of schools, and added ventilation in classrooms etc.). All of these factors could impact electricity usage, savings and carbon emissions of the schools. Additionally, ZAR 50 million were assigned to the manufacturing of 100 mobile classrooms. Although these additional classrooms could have had the intended consequence of an increase in the electricity usage in schools [10], none of the schools in our sample had mobile classrooms recently added.

1.2. An education-focused COVID-19 timeline

This section presents a timeline of events relevant to COVID-19 in South Africa, and specifically includes events relevant to the education system. The main events, listed in Table 1, were used to assess the possible influences on electricity usage in schools and will be correlated with measurements at the schools in our sample set. Only the first-wave levels of lockdown are shown. The dates of lockdown levels are shown where the country went into isolation with strict rules from the 23 March 2020 for a month, this was level five lockdown - schools were closed until the 1st of May. Level four saw schools re-opening in phases, only grade 12 of the secondary school grades and the senior primary school grade (i.e. grade 7) returned to school from the 1st of June 2020. The move to level three of lockdown was announced on the 29th of May 2020. This meant for the phasing in of the rest of the grades which includes primary school grades R, 2, 3 and 6 and secondary school grades 10 and 11 on the 6th of July. On the 12th of July, there was a call to increase the ventilation in schools, which may have increased impacts of electricity usage. The schools were closed again from the 27th of July until the 24th of August 2020. Thereafter, the move to level two of lockdown followed, which saw schools continue their schooling until the December break.

COVID-19 measures were maintained for the safety of the learners and staff. The effects of level one lockdown was also evaluated. In our article we correlated these events with our schools’ energy data.

1.3. Holidays of South African schools

Due to the pandemic term dates varied substantially from 2019 to 2020 [25]. The school term dates and holidays are shown in Table 2, and highlighted clearly in the figures in the results section. These lockdown-imposed school closures were from 18 March to 1 June and from 27 July to 24 August of 2020.

	2019	2020
Term 1	09 Jan – 16 Mar	15 Jan – 21 Mar
Term 2	02 Apr – 15 Jun	08 Jun – 25 Jul
Term 3	09 Jul – 21 Sep	24 Aug – 24 Oct
Term 4	01 Oct – 7 Dec	02 Nov – 16 Dec

Table 2: School term dates

1.4. Related work

COVID-19 has availed opportunities for research, especially energy research. In the special issue by Sovacool et al. [5] on energy research during the first part of COVID-19, more clarity is sought that links COVID-19, energy and climate that might have lead to known and anticipated impacts, amongst other relevant topics. This overarching research spectrum helps to give context to the impact of the pandemic. Regarding research on electricity transition, the pandemic has brought opportunities to still focus on climate change - bringing a window to accelerate, to learn and make society more resilient, without disregarding the devastating effects experienced by the world-wide [26]. However, there are at this stage few research outputs from Africa or in an African context with regards to the impact of COVID-19 on energy systems. Addressing the current lack of research on COVID-19 impact in an African context is a great priority due to the need for science-based evidence in decision and policy-making. The African contribution was a mere 0.6% of the global research output with South Africa contributing eight out of 22 COVID-19-related contributions. COVID-19 affected many important sectors in South Africa and globally, which had an impact on energy usage. These sectors included the health [27, 28], food [29], environmental [30–32] and economic sectors [33, 34]. The manner in which these sectors were affected also had influence on the energy sector due to COVID-19 regulations [35–40]. Therefore, there is a need to evaluate the effectiveness of the lockdown measures in the South African context [41], especially in terms of energy.

1.5. Contribution

In this paper we assess the impact of COVID-19 restrictions on school energy usage and quantify the financial savings and environmental impact of these changes. The assessment was done to understand the impact of occupancy on the energy requirements of a school (the delta), and also to quantify base load demand, which could be used to identify untapped potential for savings in aging buildings [42]. We focus on five schools in Stellenbosch, in Western Cape province of South Africa and their energy usage during the pandemic compared to the preceding 12 months.

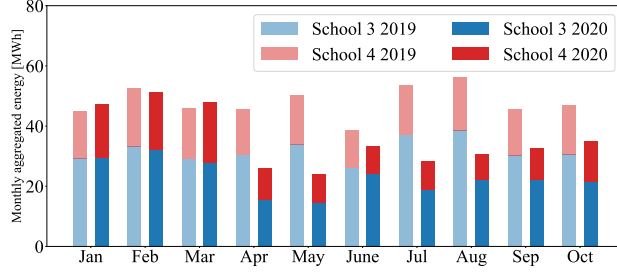
2. Method

We used a mixture of smart-meter data and bills to evaluate the change in energy (electricity) usage at the five schools in Stellenbosch. Table 3 shows information about the schools included in the energy analysis. The time periods analysed were from November 2018 to October 2019 and November 2019 to October 2020. In addition to the energy impact, we assessed the impact of the lockdowns on the cost of this electricity. Although a reduction in electricity costs reduced expenses, we also had anecdotal evidence of parents stopping to pay school fees, offsetting reductions in electricity expenses. We therefore obtained two years’ fee contributions from three schools, two quintile five schools and one quintile four school, to assess changes in contributions.

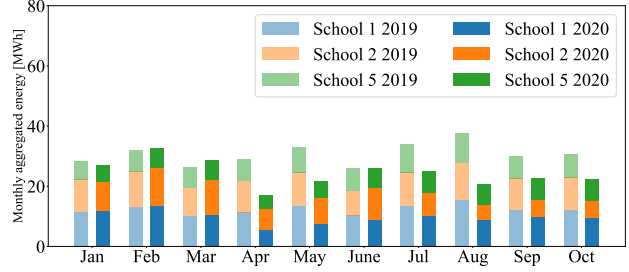
To determine the the electricity usage of the schools we used two methods. The Stellenbosch council’s smart meters that are used for billing were used to measure usage in 30-minute intervals over a two-year period from November 2018 to November 2020. This data was also used to determine the cost of the electricity usage, as the schools were on Time-of-Use tariffs. These costs were cross-validated with monthly electricity bills over the same two-year period.

Table 3: Summary of the five schools in our energy data set

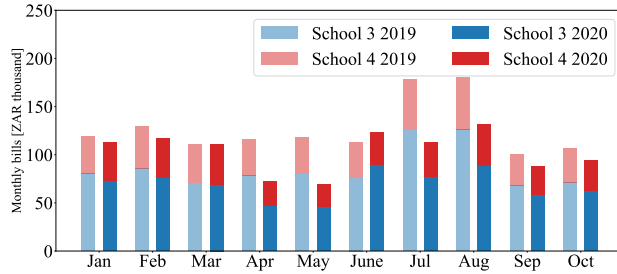
Primary/Secondary	Quintile	No of pupils	Size of building [m ²]	Hostel (Y/N)
(School 1) Primary	5	600	9,731	N
(School 2) Primary	5	800	6,894	N
(School 3) Secondary	5	720	10,613	Y
(School 4) Secondary	5	550	7,609	Y
(School 5) Secondary	4	1,200	12,132	N



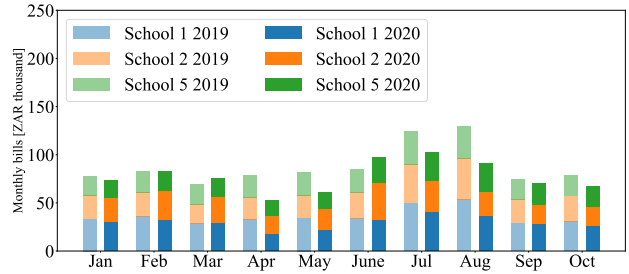
(a)



(b)



(c)



(d)

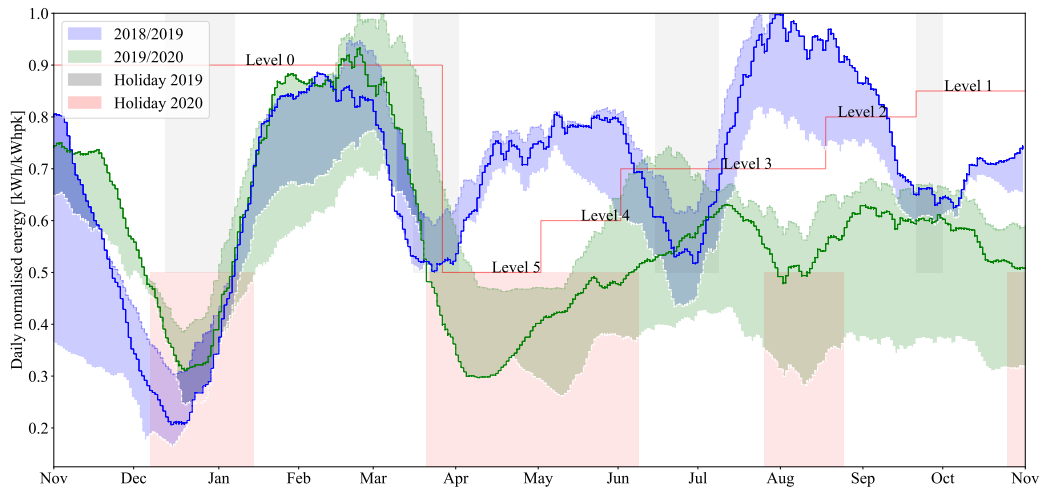
Figure 1: Energy usage between 2018/2019 and 2019/2020, monthly aggregated for schools with hostels (a) and schools without (b). Monthly bills between 2018/2019 and 2019/2020, schools with hostels (c) and schools without (d)

3. Results

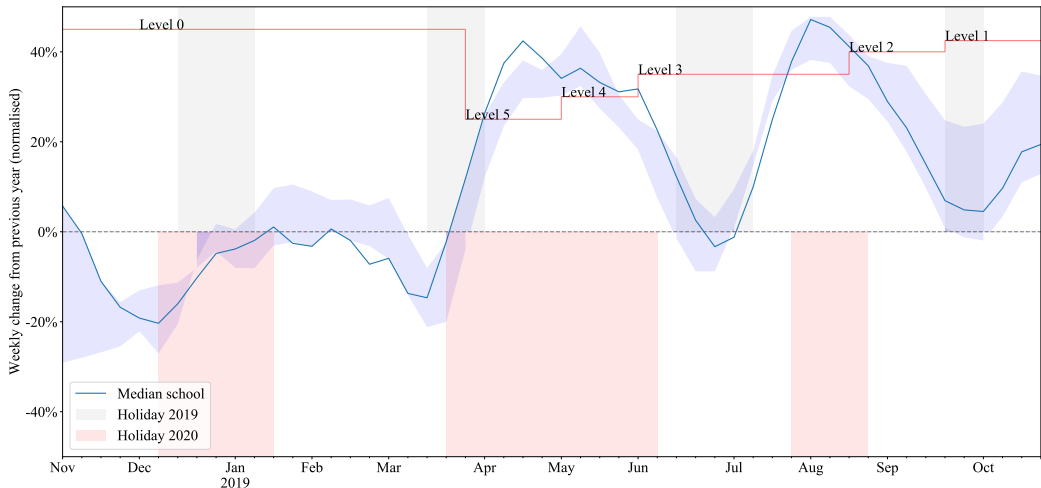
3.1. Energy usage analysis

Figure 1 shows the monthly usage and bills of schools during 2019 and 2020 for both schools with hostels, in Figure 1 (a) and (c), and schools without hostels, in Figure 1(b) and (d). These results clearly demonstrate substantial reductions in usage from April 2020, when the country went into lockdown and schools closed. When compared to 2019, the average monthly reduction from April to October was 33% for schools with hostels, and 25% for schools without hostels. These reductions are substantial, and resulted in average cumulative monthly reductions of 9 MWh per school with a hostel and 3 MWh per school without a hostel to October. The schools' bills were reduced between ZAR 11,000 and ZAR 50,000 over the April, May and June periods. One of the schools showed a sudden increase right after the first two months of lockdown, hence there was an increase in bills in June by ZAR 4,000. Some schools had increases in their electricity bills before the lockdown started. These schools show reductions in electricity costs when the lockdown started, as expected. Total billing reductions over the whole year ranges from ZAR 25,000 - 185,000.

Because of the variance in the energy usage between schools, we also compared the effect of all the schools by normalising the energy usage of each school according to the maximum-energy usage of the school over the entire period (i.e. 2018/2019 and 2019/2020). These comparative results are shown in Figure 2a with the lockdown levels and with the shaded areas indicating the periods of school closure in 2019 (in grey) and 2020 (in red). The solid line constitutes the usage of the median school, with the shaded areas denoting the schools with the maximum and minimum normalised usage. The figure shows the high level of similarity between the schools from November to March, before the move to lockdown Level 5 on 26 March 2020. From the last week in March, a sharp reduction is observed as schools were forced to shut their doors. This trend holds for all five schools. In June, as staff and



(a) Normalised-energy usage between 2018/2019 and 2019/2020 (rolling average of energy over 28 days)



(b) Normalised-energy differences between 2018/2019 and 2019/2020 (aggregated weekly).

Figure 2: Comparison of energy usage over the two-year period.

children returned to a partially-opened school usage increases, but since the schools are only partially open, only to levels substantially less than those seen in the previous year during the July holidays. This is accentuated by the sharp diversion between the years' profiles in the second half of July, when the schools opened from holidays in 2019. The same trend is seen in the overlapping range of the last week of September, when the schools were still partially open in 2020, but a holiday was in effect in 2019. Thereafter, the plots diverge again.

It is clear that the energy usage during the lockdowns in 2020 was equal to or lower than the holiday periods of 2019. An interesting conclusion is that more energy-using devices could probably have been turned off during the holidays of 2019. Another observation is that even during the Level 5 lockdowns, a substantial base-load energy was still observed at each of the schools, possibly indicating further potential savings. The minimum load (energy per hour) detected at any school was 6 kWh over the second set of 12 months.

The difference in normalised-energy usage was also calculated for each week of the period under investigation. These differences are shown in Figure 2b for the median, minimum, and maximum using schools. The figure clearly shows the two peaks of increase in the differences over the lockdown periods, and a zero-crossing delta over the period where schools were closed over 2019 for a short holiday and partially open during 2020 in the last week of June.

Table 4 lists the reduction in energy usage per calendar day over specific-time periods, which is calculated by comparing the total usage per day for the 2018/2019 period with the 2019/2020 period. Level 0, meaning not

in lockdown, is included to show the energy usages in the period before the lockdown transition to Level 5. The duration of the levels are shown in parentheses.

	Difference in schools' energy usage [kWh/day]				
	School 1	School 2	School 3	School 4	School 5
Level 0 (69 days)	22.14	33.80	-30.93	55.14	-21.75
Level 5 (34 days)	-184.91	-96.18	-477.82	-127.74	-78.15
Level 4 (31 days)	-184.35	-90.13	-635.16	-232.81	-99.52
Level 3 (77 days)	-117.47	-62.03	-400.84	-204.05	-68.26
Level 2 (34 days)	-134.91	-196.76	-390.47	-242.03	-52.82
Level 1 (29 days)	-52.28	-151.34	-196.52	-94.97	-3.48

Table 4: Energy reduction in kWh (average change in kWh/day)

The expectation is that school would use more energy when the learners are present, hence the most electricity usage would be reduced at Level 5 (assuming that more learners are at home and schools were closed) and then lesser reductions would be present towards the less restrictive levels of lockdown i.e. level 1.

We used the results in Table 4, the complete school closure during the Level 5 lockdown to calculate an estimated energy usage per student. For the five schools in the order from School 1 to School 5, this results in a reduction during Level 5 per student of 9.2kWh/month, 3.6 kWh/month, 19.9 kWh/month, 7.0 kWh/month, 2.0 kWh/month

4. Conclusion

The devastating impact of COVID-19 will be felt for years, if not decades, especially in developing countries and poor regions. Among other, it is also expected to have a disastrous impact on schooling in the region due to absences and dropouts. In this paper, we assessed the flip side of the absence coin, by empirically analysing energy savings achieved in schools in our sample over the lockdown period. These results quantify usage due to occupancy, and also the baseline despite zero occupancy.

We observed average energy reductions of 33% for schools with hostels, and 25% for schools that do not have hostels. These are the equivalent of reductions of up to 9 MWh per month per school, and monthly bills by as much as ZAR 50,000.

To allow a like-for-like comparison, we normalised the energy usage at each school to a peak observed value, and plotted the schools' normalised usage year-on-year. The results show the substantial reduction ranging between 30% and 40% during the hard lockdown.

The results further showed that savings per learner ranged between 2 to 20 kWh/month. It was also found that energy usage during hard lockdowns or even holidays in 2019 still showed substantial base-load which indicates a need for future explorations of energy saving interventions and technologies for schools in South Africa.

References

- [1] M. J. Booysen, B. Wijesiri, C. Ripunda, A. Goonetilleke, Fees and governance: Towards sustainability in water resources management at schools in post-apartheid South Africa, *Sustainable Cities and Society* 51 (2019) 101694. doi:10.1016/j.scs.2019.101694.
- [2] Reuters, UPDATE 1-S.Africa's Eskom allowed to recoup extra \$400 mln via power tariffs, 2021. URL: <https://www.reuters.com/article/idUSL8N2K3535>.
- [3] J. A. Samuels, S. Grobbelaar, M. J. Booysen, Light-years apart: Energy usage by schools across the south african affluence divide, *Energy Research & Social Science* 70 (2020) 101692. doi:<https://doi.org/10.1016/j.erss.2020.101692>.
- [4] IEA, Key World Energy Statistics 2020, Technical Report August, International energy agency, Paris, 2020. URL: <https://www.iea.org/reports/key-world-energy-statistics-2020>.
- [5] B. K. Sovacool, D. Furszyfer Del Rio, S. Griffiths, Contextualizing the Covid-19 pandemic for a carbon-constrained world: Insights for sustainability transitions, energy justice, and research methodology, *Energy Research and Social Science* 68 (2020) 101701. URL: <https://doi.org/10.1016/j.erss.2020.101701>. doi:10.1016/j.erss.2020.101701.
- [6] N. Spaul, A. Lilenstein, D. Carel, The Race between Teacher Wages and the Budget : The case of South Africa 2008-2018, *Research on Socio-Economic Policy* (2020).

- [7] T. Dzinamarira, G. Musuka, The paradox of re-opening schools in Zimbabwe in the COVID-19 era, *Public Health in Practice* 2 (2021) 100070. URL: <https://doi.org/10.1016/j.puhip.2020.100070>. doi:10.1016/j.puhip.2020.100070.
- [8] N. Ziauddeen, K. Woods-Townsend, S. Saxena, R. Gilbert, N. A. Alwan, Schools and COVID-19: Reopening Pandora's box?, *Public Health in Practice* 1 (2020) 100039. URL: <https://doi.org/10.1016/j.puhip.2020.100039>. doi:10.1016/j.puhip.2020.100039.
- [9] S. Zhan, A. Chong, Building occupancy and energy consumption: Case studies across building types, *Energy and Built Environment* 2 (2021) 167–174. URL: <https://doi.org/10.1016/j.enbenv.2020.08.001>. doi:10.1016/j.enbenv.2020.08.001.
- [10] PMG, WC, FS & NW Provincial Education Departments on Status and Impact of COVID-19 Lockdown on Schooling, 2020. URL: https://pmg.org.za/committee-meeting/31217/?utm_medium=email&utm_campaign=minute-alert&utm_source=transactional.
- [11] The Presidency, President Cyril Ramaphosa: Measures to combat Coronavirus COVID-19 epidemic, 2020. URL: <https://www.gov.za/speeches/statement-president-cyril-ramaphosa-measures-combat-covid-19-epidemic-15-mar-2020-0000>.
- [12] Department of Cooperative Governance, Minister Nkosazana Dlamini Zuma: Gazetted Regulations as part of government's intervention measures on Covid-19 Coronavirus, 2020. URL: <https://www.gov.za/speeches/minister-nkosazana-dlamini-zuma-gazetted-regulations-part-government's-intervention>.
- [13] The Presidency, President Cyril Ramaphosa: Escalation of measures to combat Coronavirus COVID-19 pandemic, 2020. URL: <https://www.gov.za/speeches/president-cyril-ramaphosa-escalation-measures-combat-coronavirus-covid-19-pandemic-23-mar>.
- [14] The Presidency, President Cyril Ramaphosa: Extension of Coronavirus COVID-19 lockdown to the end of April, 2020. URL: <https://www.gov.za/speeches/president-cyril-ramaphosa-extension-coronavirus-covid-19-lockdown-end-april-9-apr-2020-0000>.
- [15] The Presidency, President Cyril Ramaphosa: South Africa's response to Coronavirus COVID-19 pandemic, 2020. URL: <https://www.gov.za/speeches/president-cyril-ramaphosa-south-africas-response-coronavirus-covid-19-pandemic-23-apr-2020>.
- [16] The Presidency, President Cyril Ramaphosa: South Africa's response to Coronavirus COVID-19 pandemic, 2020. URL: <https://www.gov.za/speeches/president-cyril-ramaphosa-south-africas-response-coronavirus-covid-19-pandemic-13-may-2020>.
- [17] The Presidency, President Cyril Ramaphosa: Developments in South Africa's risk-adjusted strategy to manage the spread of Coronavirus COVID-19, 2020. URL: <https://www.gov.za/speeches/president-cyril-ramaphosa-developments-south-africa's-risk-adjusted-strategy-manage-spread>.
- [18] The Presidency, President Cyril Ramaphosa: UN High-Level event on Development Financing in age of Coronavirus COVID-19, 2020. URL: <https://www.gov.za/speeches/president-cyril-ramaphosa-un-high-level-event-development-financing-age-coronavirus-covid>.
- [19] Department of Basic Education, Minister Angie Motshekga: Coronavirus Covid 19 readiness for re-opening of schools, 2020. URL: <https://www.gov.za/speeches/minister-angie-motshekga-coronavirus-covid-19-readiness-re-opening-schools-1-jun-2020-0000>.
- [20] Department of Basic Education, Minister Angie Motshekga: NCOP Virtual Conference on measures taken to stop spread of Coronavirus COVID-19 pandemic in schools, 2020. URL: <https://www.gov.za/speeches/minister-angie-motshekga-ncop-virtual-conference-measures-taken-stop-spread-coronavirus>.
- [21] The Presidency, President Cyril Ramaphosa: Progress in national effort to contain the Coronavirus COVID-19 pandemic, 2020. URL: <https://www.gov.za/speeches/president-cyril-ramaphosa-progress-national-effort-contain-coronavirus-covid-19-pandemic-12>.

- [22] The Presidency, President Cyril Ramaphosa: Progress in national effort to contain the Coronavirus COVID-19 pandemic, 2020. URL: <https://www.gov.za/speeches/president-cyril-ramaphosa-progress-national-effort-contain-coronavirus-covid-19-pandemic-23>.
- [23] The Presidency, President Cyril Ramaphosa: Virtual Presidential Imbizo on Coronavirus COVID-19, 2020. URL: <https://www.gov.za/speeches/president-cyril-ramaphosa-virtual-presidential-imbizo-coronavirus-covid-19-2-jul-2020-0000>.
- [24] The Presidency, President Cyril Ramaphosa: Progress in South Africa's effort to contain the Coronavirus Covid-19 pandemic, 2020. URL: <https://www.gov.za/speeches/president-cyril-ramaphosa-progress-south-africa-effort-contain-coronavirus-covid-19>.
- [25] South African government, School calendar, 2020. URL: <https://www.gov.za/about-sa/school-calendar#}2020>.
- [26] W. Kanda, P. Kivimaa, What opportunities could the COVID-19 outbreak offer for sustainability transitions research on electricity and mobility?, *Energy Research and Social Science* 68 (2020) 101666. URL: <https://doi.org/10.1016/j.erss.2020.101666>. doi:10.1016/j.erss.2020.101666.
- [27] E. Mbunge, Effects of COVID-19 in South African health system and society: An explanatory study, *Diabetes and Metabolic Syndrome: Clinical Research and Reviews* 14 (2020) 1809–1814. URL: <https://doi.org/10.1016/j.dsx.2020.09.016>. doi:10.1016/j.dsx.2020.09.016.
- [28] S. M. Garba, J. M. Lubuma, B. Tsanou, Modeling the transmission dynamics of the COVID-19 Pandemic in South Africa, *Mathematical Biosciences* 328 (2020) 108441. URL: <https://doi.org/10.1016/j.mbs.2020.108441>. doi:10.1016/j.mbs.2020.108441.
- [29] C. Arndt, R. Davies, S. Gabriel, L. Harris, K. Makrelov, S. Robinson, S. Levy, W. Simbanegavi, D. van Seventer, L. Anderson, Covid-19 lockdowns, income distribution, and food security: An analysis for South Africa, *Global Food Security* 26 (2020) 100410. URL: <https://doi.org/10.1016/j.gfs.2020.100410>. doi:10.1016/j.gfs.2020.100410.
- [30] R. Barouki, M. Kogevinas, K. Audouze, K. Belesova, A. Bergman, L. Birnbaum, S. Boekhold, S. Denys, C. Desseille, E. Drakvik, H. Frumkin, J. Garric, D. Destoumieux-Garzon, A. Haines, A. Huss, G. Jensen, S. Karakitsios, J. Klanova, I. M. Koskela, F. Laden, F. Marano, E. Franziska Matthies-Wiesler, G. Morris, J. Nowacki, R. Paloniemi, N. Pearce, A. Peters, A. Rekola, D. Sarigiannis, K. Šebková, R. Slama, B. Staatsen, C. Tonne, R. Vermeulen, P. Vineis, The COVID-19 pandemic and global environmental change: Emerging research needs, *Environment International* 146 (2021). doi:10.1016/j.envint.2020.106272.
- [31] A. Naderipour, Z. Abdul-Malek, N. A. Ahmad, H. Kamyab, V. Ashokkumar, C. Ngamcharussrivichai, S. Chelliapan, Effect of COVID-19 virus on reducing GHG emission and increasing energy generated by renewable energy sources: A brief study in Malaysian context, *Environmental Technology and Innovation* 20 (2020) 101151. URL: <https://doi.org/10.1016/j.eti.2020.101151>. doi:10.1016/j.eti.2020.101151.
- [32] M. A. Aktar, M. M. Alam, A. Q. Al-Amin, Global economic crisis, energy use, CO2 emissions, and policy roadmap amid COVID-19, *Sustainable Production and Consumption* 26 (2021) 770–781. URL: <https://doi.org/10.1016/j.spc.2020.12.029>. doi:10.1016/j.spc.2020.12.029.
- [33] P. O. Takyi, I. Bentum-Ennin, The impact of COVID-19 on stock market performance in Africa: A Bayesian structural time series approach, *Journal of Economics and Business* (2020) 105968. URL: <https://doi.org/10.1016/j.jeconbus.2020.105968>. doi:10.1016/j.jeconbus.2020.105968.
- [34] N. Norouzi, G. Zarazua de Rubens, S. Choubanpishhezafar, P. Enevoldsen, When pandemics impact economies and climate change: Exploring the impacts of COVID-19 on oil and electricity demand in China, *Energy Research and Social Science* 68 (2020) 101654. URL: <https://doi.org/10.1016/j.erss.2020.101654>. doi:10.1016/j.erss.2020.101654.
- [35] P. Jiang, Y. V. Fan, J. J. Klemeš, Impacts of COVID-19 on energy demand and consumption: Challenges, lessons and emerging opportunities, *Applied Energy* 285 (2021). doi:10.1016/j.apenergy.2021.116441.

- [36] P. Mastropietro, P. Rodilla, C. Batlle, Emergency measures to protect energy consumers during the Covid-19 pandemic: A global review and critical analysis, *Energy Research and Social Science* 68 (2020) 101678. URL: <https://doi.org/10.1016/j.erss.2020.101678>. doi:10.1016/j.erss.2020.101678.
- [37] K. Brosemer, C. Schelly, V. Gagnon, K. L. Arola, J. M. Pearce, D. Bessette, L. Schmitt Olabisi, The energy crises revealed by COVID: Intersections of Indigeneity, inequity, and health, *Energy Research and Social Science* 68 (2020) 101661. URL: <https://doi.org/10.1016/j.erss.2020.101661>. doi:10.1016/j.erss.2020.101661.
- [38] D. Eryilmaz, M. Patria, C. Heilbrun, Assessment of the COVID-19 pandemic effect on regional electricity generation mix in NYISO, MISO, and PJM markets, *Electricity Journal* 33 (2020) 106829. URL: <https://doi.org/10.1016/j.tej.2020.106829>. doi:10.1016/j.tej.2020.106829.
- [39] N. Edomah, G. Ndulue, Energy transition in a lockdown: An analysis of the impact of COVID-19 on changes in electricity demand in Lagos Nigeria, *Global Transitions* 2 (2020) 127–137. URL: <https://doi.org/10.1016/j.glt.2020.07.002>. doi:10.1016/j.glt.2020.07.002.
- [40] A. Abu-Rayash, I. Dincer, Analysis of the electricity demand trends amidst the COVID-19 coronavirus pandemic, *Energy Research and Social Science* 68 (2020) 101682. URL: <https://doi.org/10.1016/j.erss.2020.101682>. doi:10.1016/j.erss.2020.101682.
- [41] A. Broadbent, H. Combrink, B. Smart, COVID-19 in South Africa, *Global Epidemiology* 2 (2020) 100034. URL: <https://doi.org/10.1016/j.gloepi.2020.100034>. doi:10.1016/j.gloepi.2020.100034.
- [42] P. Odell, V. Rauland, K. Murcia, Schools: An untapped opportunity for a carbon neutral future, *Sustainability (Switzerland)* 13 (2021) 1–26. doi:10.3390/su13010046.