

Machine Learning-based Lung and Colon Cancer Detection using Deep Feature Extraction and Ensemble Learning

Md. Alamin Talukder^a, Md. Manowarul Islam^a, Md Ashraf Uddin^a, Arnisha Akhter^a, Khondokar Fida Hasan^b,
Mohammad Ali Moni^c

^a*Department of Computer Science and Engineering, Jagannath University, Dhaka, Bangladesh*

^b*Centre for Cyber Security Research & Innovation, RMIT University, 124 La Trobe Street, Melbourne, 3000, VIC, Australia*

^c*Artificial Intelligence & Data Science, School of Health and Rehabilitation Sciences, Faculty of Health and Behavioural Sciences, The University of Queensland St Lucia, QLD 4072, Australia.*

Abstract

Cancer is a fatal disease caused by a combination of genetic diseases and a variety of biochemical abnormalities. Lung and colon cancer have emerged as two of the leading causes of death and disability in humans. The histopathological detection of such malignancies is usually the most important component in determining the best course of action. Early detection of the ailment on either front considerably decreases the likelihood of mortality. Machine learning and deep learning techniques can be utilized to speed up such cancer detection, allowing researchers to study a large number of patients in a much shorter amount of time and at a lower cost. In this research work, we introduced a hybrid ensemble feature extraction model to efficiently identify lung and colon cancer. It integrates deep feature extraction and ensemble learning with high-performance filtering for cancer image datasets. The model is evaluated on histopathological (LC25000) lung and colon datasets. According to the study findings, our hybrid model can detect lung, colon, and (lung and colon) cancer with accuracy rates of 99.05%, 100%, and 99.30%, respectively. The study's findings show that our proposed strategy outperforms existing models significantly. Thus, these models could be applicable in clinics to support the doctor in the diagnosis of cancers.

Keywords: Feature Extraction, Transfer Learning, Machine Learning, Ensemble Learning, Lung, Colon Cancer

1. Introduction

Cancer is a broad classification that encompasses a variety of illnesses that can damage organs in the human body. It is also a rapid reaction of aberrant cells that expand beyond their acceptable boundaries, allowing them to infect neighboring areas and travel to neighboring tissues which are known as metastasis. Metastasis is the prime factors of cancer-related death (Organization, 2022). The disease's prevalence has risen significantly over time, most likely as a result of increased sensitivity to particular cancers as age advances. Colorectal cancer, which affects the colon and rectum, is one of the major inducers of death. Lung cancer is probably the most commonly recognized malignancy (12.2%), but colorectal cancer, which affects the colon and rectum, is also the leading trigger of death (10.7%) (Lyon, 2020). It is one of the major drivers of fatality globally, although its impact is not evenly distributed

*Mohammad Ali Moni

**Md Manowarul Islam

Email addresses: mdalamintalukdercsejnu@gmail.com (Md. Alamin Talukder), manowar@cse.jnu.ac.bd (Md. Manowarul Islam), ashraf@cse.jnu.ac.bd (Md Ashraf Uddin), arnisha@cse.jnu.ac.bd (Arnisha Akhter), fida.hasan@rmit.edu.au (Khondokar Fida Hasan), m.moni@uq.edu.au (Mohammad Ali Moni)

(Vineis and Wild, 2014). When it comes to identifying cancer symptoms, there are quite a variety of approaches. With the advancements, the amount of data stored in archives is growing by the day (Godkhindi and Gowda, 2017). It is extremely challenging to analyze a huge quantity of data and extrapolate using traditional approaches (Yildirim and Cinar, 2022). The increased availability of healthcare data provides scientists with a fresh opportunity to improve existing approaches for further comprehensive clinical analysis (Sarwinda et al., 2020). In the medical profession, machine learning and deep learning are commonly utilised technologies for analyzing biomedical data (Park et al., 2018) (Das et al., 2020) (Baldi, 2018) (Lenz et al., 2019).

Machine learning (ML) is a limb of AI technologies that arose from the field of pattern identification and cognitive acquisition concepts. It produces mechanisms that effectively adapt through a vast group of information and generate forecasts based on historical evidence (Park et al., 2018). In several sectors where developing explicit techniques with acceptable efficiency seemed hard and nearly impossible, machine learning had indeed been successfully employed with remarkable outcomes (Hussain et al., 2021) (Assegie, 2021) (Xue et al., 2021). Deep learning (DL), on the contrary, is a sophisticated based pattern classification technology that has shown exceptional results in feature extraction, object detection and voice recognition, and other domains that require multilevel data processing (Pyrkov et al., 2018). It can extract meaningful significant patterns from images and has been demonstrated to obtain state efficiency, occasionally outperforming humans (Ciregan et al., 2012). Transfer learning (TL) entails repurposing previously acquired knowledge to tackle a specific situation (Kandaswamy et al., 2016). It can be used in two ways: as a baseline algorithm, which is used to train the image dataset and determine performance (Hijab et al., 2019) (Chougrad et al., 2020) (Khan et al., 2019); as a feature extractor, which is used to extract features from image datasets and then use machine or deep learning algorithms to determine performance (Deniz et al., 2018) (De Matos et al., 2019) (Abbasi et al., 2020) (Phankokkruad, 2021). Ensemble learning relies upon the combination of many learning models that are purposefully developed as well as integrated to solve issues like categorization (Polikar, 2012). It is a kind of machine learning that aims to upgrade predicted efficiency by combining several models. Moreover, it's a significant subject for increasing base classification models (Onan, 2015).

A number of papers have been conducted in the literature, each of which is predicated on a distinct strategy for detecting cancer (Hatuwal and Thapa, 2020) (Tasnim et al., 2021) (Liang et al., 2020) (Chen et al., 2021). A wide variety of medical images have already been identified and signified with the help of machine learning procedures. DL strategies have made it possible for machines to assess exalted dimensional information such as pictures, multimodal pathology scans, and video files (Adeoye et al., 2022) (Alsinglawi et al., 2022) (Tsai et al., 2022). Numerous supervised machine learning techniques have been produced, as they are extremely adept at handling biological images (Bukhari et al., 2020) (Wu and Zhao, 2017) (Papp et al., 2021) (Urbanos et al., 2021).

To classify lung and colon cancer efficiently, we need to train our model with a large dataset where all cancer possibilities are included. To do so, our research emphasizes designing a resourceful and well-organized framework where we can take large histopathological image (HPI) datasets (LC25000) and a number of pre-processing methods are applied to datasets. k-fold cross-validation, and feature extraction, all are applied to it. To build a robust model, we have used an ensemble method at the end of our implementations getting better performance in cancer classifications.

The performance of our proposed hybrid model will be evaluated using high-performance filtering (HPF) with

combination of ensemble learning. We have evaluated a variety of performance indicators in our investigation including accuracy, recall, precision, f1-score, MAE, MSE, RMSE, confusion matrix, AUC score and the ROC Curve. The classifier algorithms in the proposed framework can detect cancer (lung and colon) having an accuracy rate of above 99%.

The following are the major accomplishments of this study.

- First of all, to detect lung and colon cancer, we proposed an efficient hybrid technique that combines deep feature extraction, high-performance filtering, and an ensemble learning strategy.
- Secondly, A deep feature extraction technique is proposed that is uniquely applied using different transfer learning models to extract features.
- Finally, we analyze our proposed model on HPI datasets using a set of metrics and showed how to diagnose lung and colon cancers, thereby contributing to the new knowledge of AI-based applications.

The remainder of the paper is arranged as follows: Section 2 leads a literature review to identify the state-of-art of lung and colon cancer diagnoses using machine learning. Section 3 gives the methodology and the dataset description of the study. The experimental setup and performance evaluation are presented in Section 4 and Section 5, respectively before concluding the paper in section 6.

2. Literature Review

Categorizing histopathological image datasets of many cancer kinds, such as breast, lung, colon, colorectal, and skin cancer, has received much attention. Various approaches are utilized using ML, DL, and TL to detect lung and colon cancer.

2.1. Lung and colon cancer using computer-aided diagnosis (CAD) approach

A CAD method was introduced by (Nishio et al., 2021) to categorize histopathology images of lung tissues automatically. They evaluated the effectiveness of eight ML algorithms on two datasets using traditional texture analysis (TA) and homology-based image processing (HI) to visual feature extraction. The CAD system with HI outperformed the TA system in both datasets. As a result, they determined that HI was much more beneficial for CAD systems than TA and that a precise CAD system for lung tissues might be developed. Similarly, (Mangal et al., 2020) created a CAD system by examining digital pathology images for recognizing lung and colon cancer utilizing a convolutional neural network (CNN). In comparison to classical ML models as well as deep CNN models utilizing TL trained on a similar collection though utilizing state-of-the-art feature descriptors, their empirical findings on the LC25000 indicated better accuracy of 97.89% for lung and 96.61% for colon gained by CNN. Moreover, (Shandilya and Nayak, 2022) devised a CAD technique for categorizing histological pictures of lung tissues. They utilized a publicly accessible dataset of histological photos of lung tissue for the design and validation of CAD. Multi-scale processing was performed to extract image features. Furthermore, a comparative analysis was conducted using seven pre-trained hyper-tuned CNN models for lung cancer prediction where, ResNet101 provided the highest accuracy of all, at 98.67 percent. This study will assist researchers in developing more effective CNN-based lung cancer detection models.

2.2. Lung and colon cancer using CNN approach

A CNN approach was proposed by (Hatuwal and Thapa, 2020) for detecting lung cancer using histopathology pictures. Their model revealed a considerable improvement in classification accuracy and got training and validation accuracy of 96.11% and 97.20%, respectively. Similarly, (Tasnim et al., 2021) introduced three CNN models to analyze colon cell imaging data. The models were trained and tested at various epochs to estimate the learning rate. The average pooling and max-pooling layers are revealed to be 95.48% and 97.49% accurate, respectively. The MobileNetV2 exceeds the other two models with the highest accuracy of 99.67% and the lowest loss rate of 1.24%. It would be developed in collaboration with medical professionals at hospitals or clinics that specialize in colon cancer treatment. Qasim et al. (2020) produced a CNN model for predicting colon cancer distinguished by speed and accuracy with a small number of parameters. Their model was based on two routes, each of which was in charge of building 256 feature maps to enhance the number of features at various levels and so raise the accuracy and sensitivity. The visual geometry group (VGG16) model was created and trained within the same dataset to assess the effectiveness of the proposed scheme. The acquired accuracy is 99.6% for the proposed model and 96.2% for VGG16. The performance indicated that it was useful in identifying colon cancer. On the other hand, (Sikder et al., 2021) proposed a unique method for segmenting, recognizing, classifying, and detecting various types of malignant cells in both MRI and RGB scans. They used a CNN model and a SegNet approach with a morphological operation that was superior to the typical SegNet model to minimize training time and boost segmentation results. The proposed technique produced an average accuracy rate of 93 percent in detecting cancer cells from multiple cancer datasets. They were able to overcome the limitations of employing separate cancer identification techniques for MRI and Histopathology data.

2.3. Lung and colon cancer using DL and ML approach

An ML approach to diagnosing lung and colon cancer based on DL was proposed by (Masud et al., 2021) that analyzed pathological photos of lung and colon cancers to identify five different types of tissues. They extracted the features using 2D Fourier and 2D Wavelet (2D FW) feature extraction process and combine the features and trained them with a CNN model. The obtained findings revealed that the presented architecture has the highest accuracy of 96.33 cents in identifying cancer tissues. The use of this approach will aid healthcare practitioners in the development of a computerized and efficient method for detecting different forms of lung and colon cancers. Similarly, (Sarwinda et al., 2020) evaluated the effectiveness of deep feature extraction for colorectal cancer diagnosis using two TL models as well as traditional ML algorithms. The findings revealed that employing DenseNet121 to extract the features outperforms ResNet50 for all ML algorithms and achieved 98.53% accuracy utilizing the KNN algorithm. The developed approach proved adequate for identifying colon tissue. To enhance picture classification efficiency, (Bansal et al., 2021) presented an approach integrating deep features generated with VGG19 with other customized feature extraction techniques, such as SIFT, SURF, ORB, and the Shi-Tomasi corner detector algorithm. Additionally, the collected features from these methods were categorized using a variety of ML algorithms. The empirical findings showed that Random Forest (RF) with the cooperative features beat other classifiers with 93.73 percent accuracy. According to the findings, a single feature extractor is insufficient to provide consistent outcomes. As a result, for picture classification, a mixed method employing DL features as well as classical handmade features is

preferable. Toğaçar (2021) introduced a DL model where the image classes were built from the ground up using the DarkNet19 model. The feeble features were selected from the feature set retrieved from the DarkNet19 model using the Equilibrium and Manta Ray Foraging optimization approach and separated from the rest of the set's features, yielding an optimal feature set. The Support Vector Machine (SVM) approach was accustomed to aggregating and categorizing the suitable characteristics generated by the two optimization algorithms utilized. The overall classifier performance percentage was 99.69%. It was discovered that combining the complementary approach with certain optimizing strategies increased the dataset's categorization ability. To determine lung and colon cancer using histopathological images with improved augmentation strategies, (Garg and Garg, 2020) proposed a method by modifying 8 TL models. According to the findings, the 8 models achieved notable accuracy ranging from 96 percent to 100 percent accuracy. To visualize the focus images of CNN models, SmoothGrad and GradCAM were then employed that had previously been learned to differentiate between cancerous and benign images.

2.4. Lung and colon cancer using Hybrid approach

In (Phankokkruad, 2021), for diagnosing lung cancer three TL models were utilized. The findings exhibited that the proposed models attained accuracy levels of 62 percent, 90 percent, and 89 percent for VGG16, ResNet50V2, and DenseNet201, respectively. Lastly, a combination of the three proposed CNN models called the ensemble model exceeded the other models with a validation accuracy of 91%. The employment of the ensembles of the TL model, which enhances efficiency, is beneficial in overcoming the challenge of diagnosing lung cancer. Another, (Chen et al., 2021) proposed a hybrid classifying framework that combines the Inception v3, hog, and daisy extracting features modules to distinguish lung cancer and normal tissue from lung pathology images. The experimental findings showed that the proposed model achieved an accuracy of 99.60 percent, which was a gratifying outcome greater than other comparable trials. It demonstrated that hybrid deep learning models may be used to evaluate a reliable cancer diagnosis approach. On the other hand, (Liang et al., 2020) developed a shearlet transform-based multi-scale feature fusion (MFF-CNN) model to recognize histopathology images of colon cancer. It achieved a 96 percent detection performance for colorectal after feature learning and feature fusion. Its improvement offers innovative opportunities for cancer screening instantaneously, with objectivity as well as accuracy. Yildirim and Cinar (2022) created a new method for identifying colon cancer images called MA ColonNET. The algorithm reached a 99.75 cent accuracy rate for detecting and classifying colon cancer which will help to avoid human errors that are common in older methods. They demonstrated that the presented methodology can identify colon cancer faster than originally thought. The therapy strategy will be more effective as a result of this as well. Furthermore, (Adu et al., 2021) offered the DHS-CapsNet, a revolutionary dual horizontal squash capsule network for classifying lung and colon tumors on histopathological pictures. Encoder feature fusion (EFF) and a unique horizontal squash (HSquash) algorithm were used to build DHS-CapsNet. The collected feature from the 2-lane convolutional layers was aggregated by the EFF, which provided valuable insights for greater accuracy. The claiming prediction error for the DHS-CapsNet was 0.77 percent, as opposed to 14.45 percent for the regular CapsNet. It enhanced CapsNet which can be used as a CAD approach to aid clinicians in diagnosing lung and colon cancer. The related paper summary is shown in Table 1.

SL. No	Author	Dataset	Approach	Accuracy(In %)
1	Nishio et al. (2021)	Histopathology	CAD	99.23
2	Mangal et al. (2020)	Histopathology	CAD	97 (Lung) 96 (Colon)
3	Shandilya and Nayak (2022)	Histopathology	CAD	98.67
4	Hatuwal and Thapa (2020)	Histopathology	CNN	97.2
5	Tasnim et al. (2021)	Histopathology	CNN	99.67
6	Qasim et al. (2020)	Histopathology	CNN	99.6
7	(Sikder et al., 2021)	Brain MRI Image	CNN	98.59 (IoU)
		BreCaHAD		91.16 (IoU)
		SN-AM		93.02 (IoU)
		Histopathology		90.24 (IoU)
8	Masud et al. (2021)	Histopathology	2D FW+ CNN	96.33
9	Sarwinda et al. (2020)	Histopathology	DenseNet121 + KNN	98.53
10	Bansal et al. (2021)	Caltech101	VGG19 + RF	93.73
11	Toğaçar (2021)	Histopathology	DarkNet19 + SVM	99.69
			VGG16	98
			ResNet50	96
			InceptionV3	100
			InceptionResNetV2	100
12	Garg and Garg (2020)	Histopathology	MobileNet	100
			Xception	100
			NASNetMobile	97
			DenseNet169	100
13	Phankokkruad (2021)	Histopathology	Ensemble Model	91
14	Chen et al. (2021)	Histopathology	Ensemble Model	99.6
15	Liang et al. (2020)	Histopathology	MFF-CNN	96
16	Yildirim and Cinar (2022)	Histopathology	MA ColonNET	99.75
17	Adu et al. (2021)	Histopathology	DHS-CapsNet	99.23

Table 1: Related work summary

3. Methodology

In this section, we have covered image pre-processing, deep feature extraction, high-performance filtering, and ensemble learning method as well as our proposed model. We also give a basic rundown of the ML techniques that are used to detect lung and colon cancer.

We developed our proposed model using feature extraction and machine learning algorithms on LC25000 lung and colon histopathological image datasets to assure a prognosis of lung and colon cancer. Figure 1 represents the schematic block diagram of our proposed paradigm. The stages of our proposed model are as follows:

- Step-1: Initially, we take the histopathological image datasets (LC25000) for lung and colon and combine both (lung and colon) cancer to conduct our experiment. There are three types of lung cancers, and two types of colon cancers are available in our datasets.
- Step-2: In the pre-processing step, the pre-processing is accomplished by resizing the image into 128x128, converting the image into bgr2rgb, and then the image to NumPy array. After that, we perform feature scaling where we use the generalization method in the image; we divide every image array values by 255, which is the maximum value (max. intensity value of an image), and perform labeling by assigning a label (0,1,2) for each image.
- Step-3: In the deep feature extraction step, we extract features from the image datasets using five different transfer learning such as VGG16, VGG19, DenseNet169, DenseNet201 and collect the features for next the step.
- Step-4: In this step, successfully extracted features are fit into the six well-known ML algorithms such as Random Forest (RF), Support Vector Machine (SVM), Logistic Regression (LR), Multi-Layer Perceptron (MLP), Extreme Gradient Boosting (XGB), and Light Gradient Boosting (LGB) to evaluate the performance.
- Step-5: In this High-Performance Filtering (HPF) step, we filter our ML algorithms based on the accuracy. By using this filtering, we select the top three algorithms for the next step.
- Step-6: In this Ensemble Learning step, after getting the top three algorithms from HPF, we apply majority (hard) and weighted average (soft) voting classifiers on these algorithms for all TL and select the best ensemble voting classifier for each TL model.
- Step-7: Finally, the performance is assessed based on the accuracy for each TL and selecting the best TL model. After that, the performance metrics such as accuracy, recall, precision, f1-score, MAE, MSE, RMSE, confusion matrix, AUC score, and ROC Curve are used to evaluate the selected model of our experiment and also showed the comparison analysis with other existing models.

3.1. Dataset Collection

In our proposed work, we have employed the lung and colon cancer dataset called histopathological images (LC25000) dataset. The dataset consists of two cancerous datasets called lung and colon cancer datasets. It contains

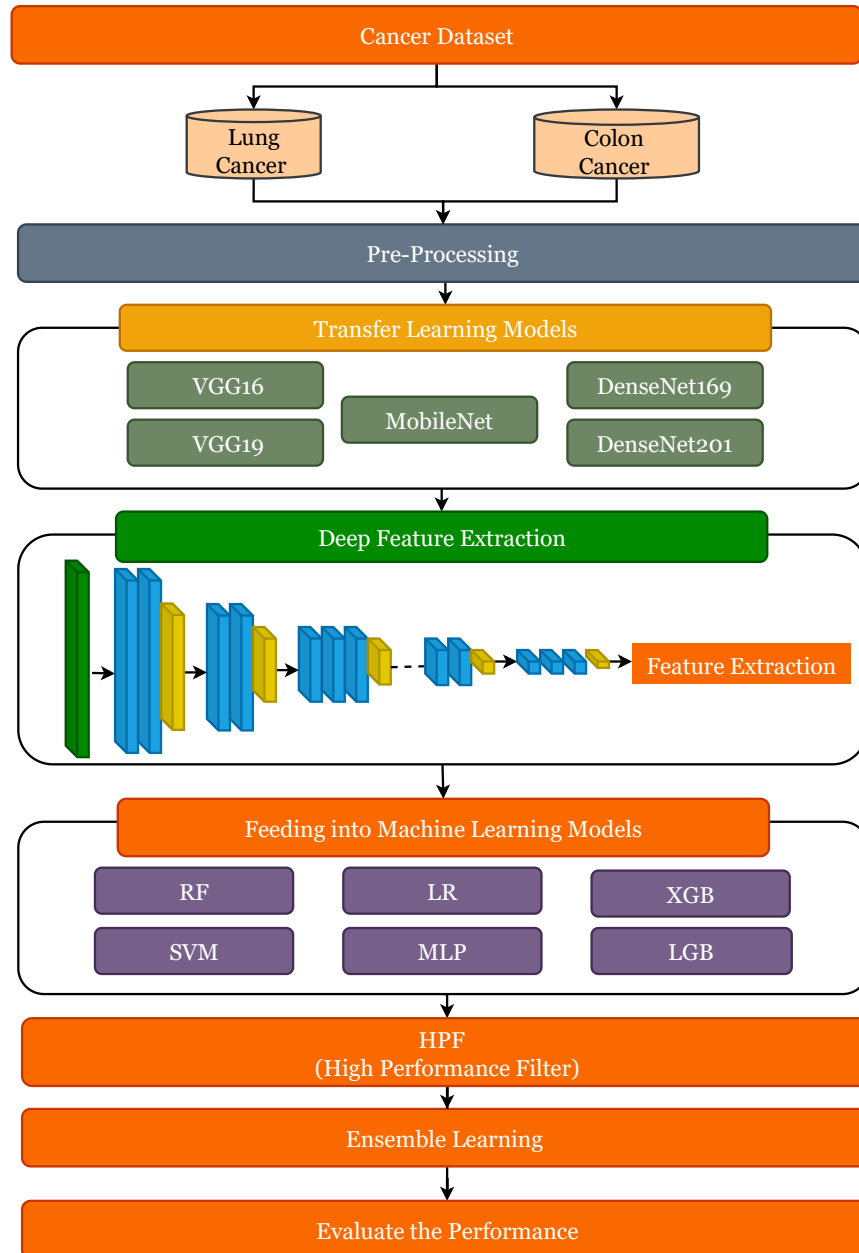


Figure 1: The proposed hybrid model for lung and colon cancer detection

Lung Cancer	No. of Images
Benign lung tissue	1400
Lung adenocarcinomas	1400
Lung squamous cell carcinoma	1400
Total	4200

Table 2: Distribution of Lung Cancer dataset

Colon Cancer	No. of Images
Benign colon tissue	1400
Colon adenocarcinomas	1400
Total	2800

Table 3: Distribution of Colon Cancer dataset

25000 images where 10000 for colon cancer and 15000 for lung cancer images. The lung cancer dataset contains 3 labels of cells such as adenocarcinomas, squamous cell carcinoma and benign tissue. The colon cancer dataset contains 2 labels of cells, such as adenocarcinomas and benign tissue. The LC25000 dataset was created using a snippet of HIPAA-compliant as well as confirmed references, including 750 lung tissue where 250 adenocarcinomas, 250 squamous cell carcinomas and 250 benign tissue as well as 500 colon tissue where 250 adenocarcinomas and 250 benign tissue which were then augmented to create 25,000 images (Borkowski et al., 2019).

In our experiments, we have used lung, colon, and both (lung and colon) cancer images. So, we took 10000 images consisting of 5000 images for colon tissue and 5000 images for lung tissue for both lung and colon; 2800 images for colon tissue for colon; 4200 images for lung tissue for lung. The distribution of Cancerous datasets images is shown in Table2, Table 3, and Table4, for our research.

3.2. Pre-processing

Initially, in our methodology, we downsized the input image to 128x128 while keeping the same image size to train the model. We transformed the scaled image into bgr2rgb and then into a NumPy array to work with picture intensity values. Then, perform scaling, a procedure that normalizes the value of image intensity values within a

Cancer	No. of Images
Benign lung tissue	2000
Lung adenocarcinomas	2000
Lung squamous cell carcinoma	2000
Benign colon tissue	2000
Colon adenocarcinomas	2000
Total	10000

Table 4: Distribution of Cancer (lung and colon) dataset

Lung Cancer	Dataset	Label
Lung adenocarcinoma	lung_aca	0
Lung benign tissue	lung_n	1
Lung squamous cell carcinoma	lung_scc	2

Table 5: Labeling for lung cancer dataset

Colon Cancer	Dataset	Label
Colon adenocarcinoma	colon_aca	0
Colon benign tissue	colon_n	1

Table 6: Labeling for colon cancer dataset

range (0 to 1). To reduce computational complexity, the image is scaled by dividing the image array by 255. Finally, we added the image label as Image labeling, which is an important step because it allows us to identify malignant photos. Fig. 2 depicts the pre-processing steps of our proposed model. Table 5 and Table 6 show labeling for lung and colon cancer dataset, respectively.

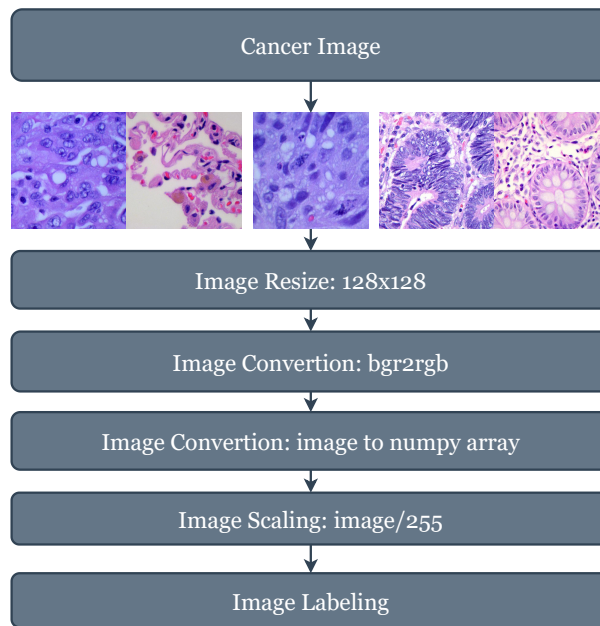


Figure 2: Pre-processing steps

After pre-processing, the resultant images are sharper, bright-colored, and more discernible details are visible than the original which are suitable to drive into the model and get better performance than others. Fig 3 depicts the before and after image pre-processing for lung cancer adenocarcinoma, squamous cell carcinoma, and benign tissue respectively, where the upper part (a,b,c) are before pre-processing and the lower part (d,e,f) are the after pre-processing of lung cancer image.

Fig 4 depicts the before and after image pre-processing for colon cancer adenocarcinoma and colon benign tissue respectively, where a and b are the before and after pre-processing images for colon adenocarcinoma images and c

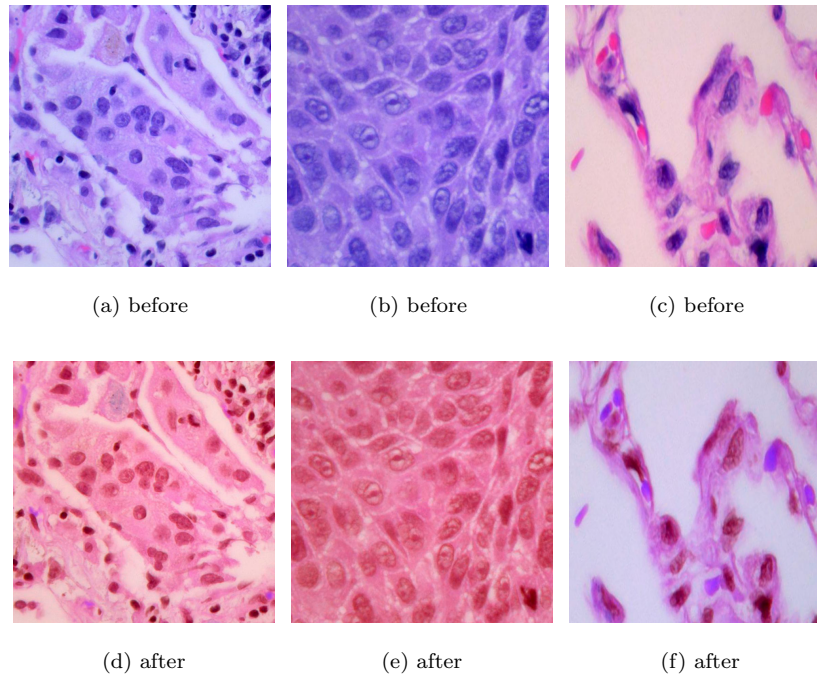


Figure 3: Lung adenocarcinoma, squamous cell carcinoma, benign tissue before and after pre-processing

and d are the before and after pre-processing image for colon benign tissue image.

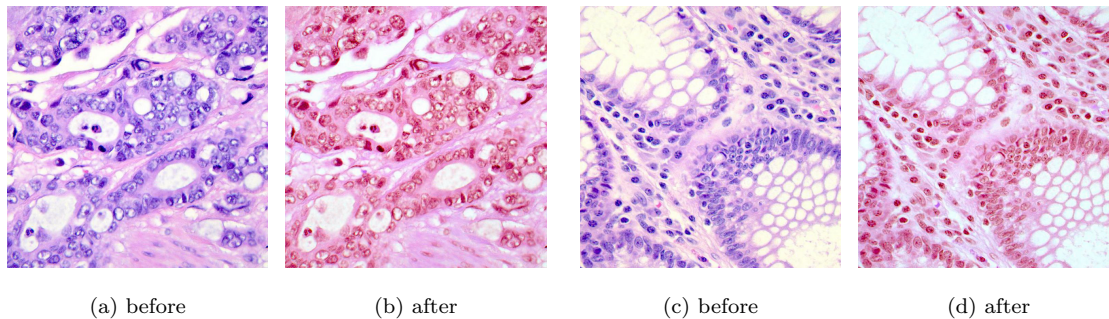


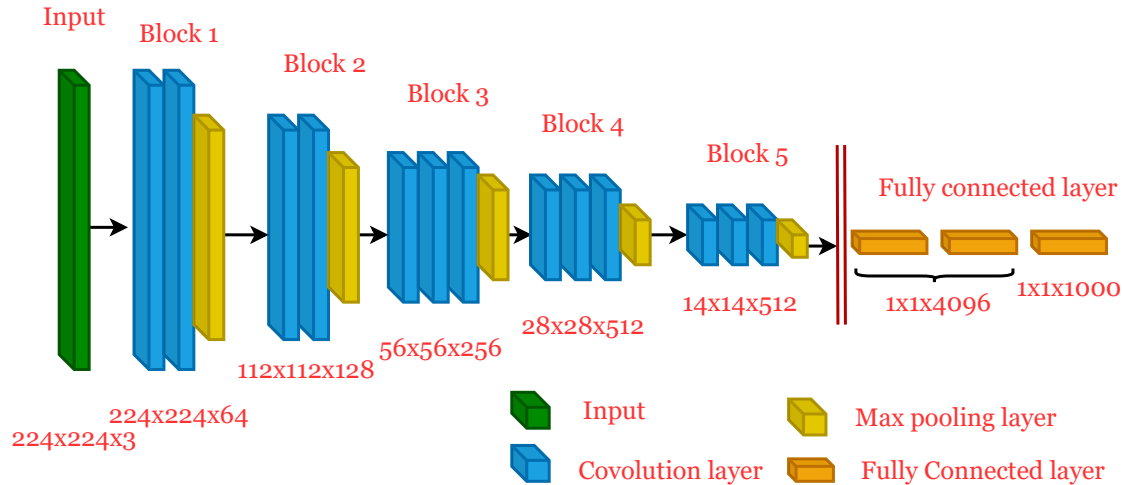
Figure 4: Colon adenocarcinoma and benign image before and after pre-processing

3.3. Deep Feature Extraction

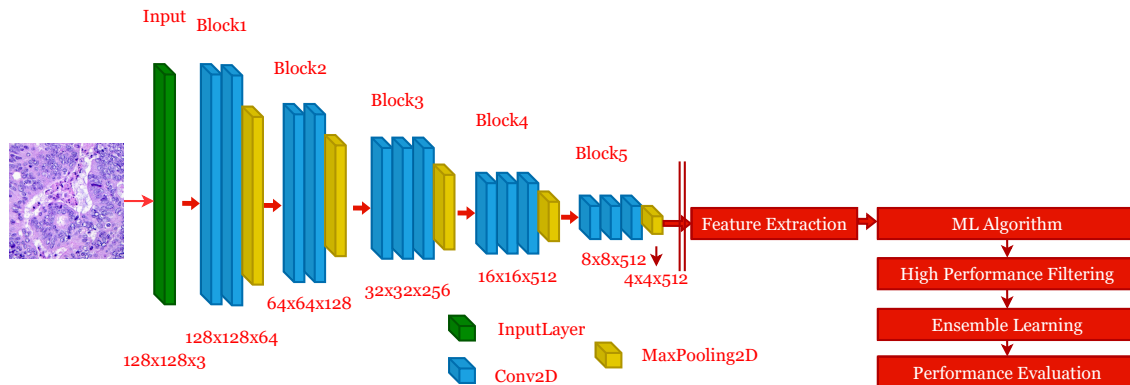
Transfer learning is the method of applying features learned on one problem to solve a new, related problem (fchollet, 2021). This deep learning approach has received a lot of attention, so we adopt several existing models in our methodology and adjust them to fit our needs. Rather than training all of the model's layers, we isolate a few and use the trained weights in those frozen layers to derive certain properties from our datasets (Thakur, 2021). The significant properties of an image have a big impact on how well an identification operation works. In our paper, we analyze our datasets using five different TL models such as VGG16, VGG19, MobileNet, DenseNet169, and DenseNet201 to extract features in addition to assessing each individual's effectiveness by using various ML algorithms (Talukder et al., 2022b).

- VGG16, a CNN model produced by the Visual Geometry Group (VGG) of the University of Oxford, was named the winner of the 2014 ILSVRC object identification algorithm (Karen Simonyan, 2021). VGG16's main contribution is to show that increasing network depth can enhance network performance in some cases. VGG16 improves on the standard AlexNet by using numerous 3x3 convolution cores to substitute the larger convolution cores (1111, 707, 55), which can extend the depth of the network and minimize the number of network parameters (Yang et al., 2021). There are 3 parts to VGG16 transfer learning such as convolution, pooling, and fully connected layers. Filters are employed in the convolution layer to extract information from images, and the kernel, as well as stride size, are the most significant characteristics in this layer. To lessen the dimensionality and calculations, the pooling layer is employed to shrink the network's spatial size. They have fully connected interactions with the previous layers in fully connected layers.
- The VGG19 transfer learning model, which is also a CNN model, was introduced by (Simonyan and Zisserman, 2014). It is a 19 layers-weighted ground feature extractor that is extensively utilized (Lin and Guo, 2021). The consisting of its layers are the combination of 16 convnets and 3 dense layers which are the linked layers to categorize pictures into 1000 item categories. The ImageNet repository was employed to develop VGG19, which comprises over a million pictures separated into 1000 classes. The sequence of the model is 2 conv 1 max.pool, 2 conv 1 max.pool, 4 conv 1 max.pool, 4 conv 1 max.pool, 4 conv 1 max.pool and 3 FC layers. Due to the employment of numerous 3x3 filters within every convnet, it is a widely common picture predictive model.
- One of the Convolutional networks that have already been trained is MobileNet (Howard et al., 2017). The quantity of parameters that have been lower than others distinguishes MobileNet from other existing models. It is built on depthwise separable convolutions, which were developed in (Sifre and Mallat) to reduce the computing effort in the initial few layers, depthwise and pointwise convolutions are two layers by which it is constituted. The technique of filtering the input without creating additional features is known as depthwise convolution. As a result, the pointwise convolution procedure, which generates innovative features, was integrated. Thus, depthwise separable convolution was coined to describe the merging of two layers. It assigns a unique filter for each stream of input using depthwise convolutions and afterward utilizes 1x1 Conv (pointwise) for constructing a joint distribution of output from the depthwise layer. Batch Normalization (BN) with Rectified Linear Unit (ReLU) is employed after each convolution. Its efficiency was determined by a trade-off between delay and correctness. Due to the compactness, we can perform our tasks using this method on the CPU in lieu of the GPU. It can be used for categorization, identification, and segmentation in the same way as previous large-scale models that have been released (Sae-Lim et al., 2019).
- DenseNet is a Dense Convolution Neural Network, introduced by (Huang et al., 2017). In DenseNet, each layer influences all other layers in a feed-forward manner [30]. There are five levels in a DenseNet block. The very first four layers are dense, and the final layer is a transition layer. This dense block has a growth rate of (k) for each layer. If the growth rate is 4 then a 2x2 average pool with a 1x1 conv and a stride of 2 exists in the transition layer. There are 1x1 and 3x3 conv with a stride of 1 in the dense layer. Two popular DenseNet networks such as DenseNet169 and DenseNet201 are utilized in our research experiment.

Fig. 5 illustrates a sample of the feature extraction procedure where it includes the original architecture of VGG16 and deep feature extraction from the VGG16 model. The composition of the original VGG16 CNN model has 13 convolutional (conv) layers, 3 fully connected (FC) layers, and 5 pooling layers. The sequence of the model is 2 conv 1 pool, 2 conv 1 pool, 3 conv 1 pool, 3 conv 1 pool, 3 conv 1 pool and 3 FC layers. It employs a small kernel (3x3) with 1 stride on all conv layers. The max pool layer continually derives after the conv layers. It takes 3 channels of images with a resolution of 224x224. In the 3 FC layers, the first two FC layers have an identical channel size of 4096 and the last one has a channel size of 1000, which defines the number of class labels in the ImageNet data. The soft-max layer is the output layer, and it's in charge of the input image's assigned probability. On the other hand, the deep feature extraction from the VGG16 model is the same as the original VGG16 model except for the last 3 FC layers. Without involving the last 3 FC layers, we have just extracted features from this model and grazed them into different ML models after that we apply HPF and get the top 3 filtered ML algorithms and then apply ensemble learning with these algorithms and evaluate the performance. The same procedure is applied to all of the TL models to extract features.



(a) The original VGG16 model



(b) Deep feature extracted VGG16 model

Figure 5: A sample architecture of original VGG16 model and deep feature extracted VGG16 model

In this feature extraction process, we fixed the last 3 FC layers and extracted the features from the last block

Dataset	Before feature extraction	After feature extraction
Lung	4200, 128, 128, 3	4200, 16384
Colon	2800, 128, 128, 3	2800, 16384
Cancer(lung and colon)	10000, 128, 128, 3	10000, 16384

Table 7: Shape of feature

of the max-pooling layer. In the feature extraction process, the before and after feature shape is shown in 7 where the input size of the image is $128 \times 128 \times 3$. The final feature size after feature extraction is 16384. Hence, before feature extraction the size of features is $n \times 128 \times 128 \times 3$, and after extraction $n \times 16384$. Here, n is the number of input images. So, for lung cancer, the input feature size is $4200 \times 128 \times 128 \times 3$ and the output feature size is 4200×16384 , for colon cancer, the input feature size is $2800 \times 128 \times 128 \times 3$, and the output feature size is 2800×16384 , for (lung and colon) cancer, the input feature size is $10000 \times 128 \times 128 \times 3$ and output feature size is 10000×16384 . After that, we provision the extracted features into the ML algorithms to assess the efficiency of each machine learning model. This procedure is applied for all of the above described TL models.

3.4. Machine Learning Algorithms

In this section, we have described several ML algorithms which is used in our model to evaluate the performance.

- Random Forest (RF) is a meta-approximation that employs averaging to enhance accuracy level and multiple decision tree classifiers are fitted to various sub-trials of the dataset to prevent over-fitting (Alkhatib and Abualigah, 2020). It is a combination of several uncut DTs derived from different bootstrap samples of the training data and each attribute subset is sampled separately from the actual feature space (Breiman, 2001). It creates several independent decision trees from the training dataset's original features, then votes to combine all of the trees into a single classification model (Pan et al., 2014). It achieves a better prediction accuracy due to employing the outcomes of numerous decision trees to construct a prediction (Ahsan et al., 2021).
- Support Vector Machine (SVM) is a classification procedure initiated with the detection of the hyperplane and then the classification of the classes (Safaldin et al., 2021). For classification analysis, SVM is a popular machine learning tool. SVM increases generalization by reducing the learning machine's structural risk. SVM has been used in many contexts because of its high recognition rate and fast training speed when classifying relatively small datasets (Shen et al., 2016). It has been shown to be an efficient strategy for classification tasks because it adheres to the proper risk management design to maximize generalizability. Furthermore, because solving an SVM is effectively a convex optimization problem, the procured internally optimal solution must also be a globally optimal one. As a result, SVM is used to train the base classifiers in this case (Gu et al., 2019).
- Logistic Regression (LR) is a conventional parametric approach that is a generalized linear model extension that has been typically employed in diverse areas, including health care (Yang et al., 2014). It uses a logit relation equation to predict the output. Using backward/forward elimination with a p-value less than 0.05, we

can pick the most significant predictor parameters using the method's iterative selection approach. The Realignpo package in R 3.3.1 statistical program is used to measure the relative value of each variable (Grömping et al., 2006). It conjectures to find out how to generate a categorical output from input variables and also forecasts a categorical dependent variable's output. So, the final output must be either categories or discrete.

- Multilayer Perceptron (MLP) is a common ANN architecture that consists of a series of layers made up of neurons as well as their connections. It can measure the weighted sum of its inputs before applying an activation function to generate a signal that will be sent to the next neuron (Castro et al., 2017). Between the input and output layers, it has one or more hidden layers. The neurons are arranged in layers and connections are often guided from lower to upper layers, and the neurons in the same layer are not linked (Ramchoun et al., 2016). In the input layer, the number of neurons equals the number of measurements for the pattern query, while the number of neurons in the output layer equals the number of classes.
- Extreme Gradient Boosting (XGB) is a supervised ML technique that improves speed and performance by using gradient-boosted decision trees. It is fast as compared to other implementations of gradient boosting (Chen and He, 2015). The final prediction is made by a combination of the residuals of prior models which are predicted from the generated novel models (Talukder et al., 2022a). It uses a gradient descent strategy to reduce loss and to boost up the model for improved performance. It's a scalable end-to-end tree-boosting method that data scientists utilize to obtain cutting-edge outcomes on a variety of machine learning problems (Chen and Guestrin, 2016). The objective functions in XGboost consist of two parts training loss and regularization with θ the optimal settings for x_i training data and y_i labels. Equ. 1 Shows objective functions of XGBboost.

$$O(\theta) = L(\theta) + \Omega(\theta) \quad (1)$$

Here, L stands for the training loss function, which indicates how well our model predicts the training datasets.

- Light Gradient Boosting (LGB) is a new gradient learning paradigm based on the decision tree idea (Ke et al., 2017). It outperforms XGBoost, is distinguished by its use of less storage, its use of a leaf-wise growth technique with depth limits, and its use of a histogram-based algorithm to speed up the learning process (Yang et al., 2020). LightGBM builds a k-width histogram by discretizing continuum floating-point eigenvalues into k bins employing the aforementioned histogram algorithm. Moreover, the histogram approach does not necessitate extra archiving of pre-sorted findings and results can be saved in an 8-bit integer upon feature determination, which reduces storage use to 1/8 of what it was before. In spite of this, the model's efficiency suffers because of the strict dividing mechanism (Mohammadi et al., 2021).

3.5. High-Performance Filtering

High-Performance Filtering (HPF) is a process in which we have selected the top three ML algorithms to feed into our ensemble learning process. The output of this HPF process is to find the estimators which we can feed into our ensemble learning model to generate our final output. To optimize the consistency and accuracy of estimates,

Algorithm	VGG16	VGG19	MobileNet	DenseNet169	DenseNet201	Average
RF	93.57	94.05	95.71	94.52	96.9	94.95
SVM	96.9	97.62	98.57	97.14	98.1	97.67
LR	96.9	96.67	98.81	97.14	98.33	97.57
MLP	96.9	96.67	98.1	97.62	99.05	97.67
XGB	94.05	95.71	96.19	95.95	97.38	95.86
LGB	95.24	96.43	97.38	96.67	98.1	96.76

Table 8: Accuracy performance of ml algorithms on TL for lung cancer (in %)

Algorithm	VGG16	VGG19	MobileNet	DenseNet169	DenseNet201	Average
RF	97.5	97.14	99.29	98.57	98.93	98.29
SVM	99.64	99.29	100.0	99.29	99.64	99.57
LR	99.64	99.29	100.0	99.29	99.64	99.57
MLP	99.64	99.29	100.0	99.29	99.64	99.57
XGB	95.36	97.5	98.93	98.21	98.93	97.79
LGB	97.14	97.86	99.64	99.29	99.29	98.64

Table 9: Accuracy performance of ml algorithms on for colon cancer (in %)

we use the best three algorithms in the ensemble learning process. In some circumstances, if we acquire worse accuracy in half of the six ML algorithms, the ensemble learning models would not outperform the base learners. Moreover, if we select the top two ML algorithms the robustness is comparatively legislation. Hence, to circumvent these issues, we select the top three or half of the trained ML algorithms. Moreover, the model's training time will be comparatively less than the top 4 as it used only top 3 and the accuracy rate will be comparatively higher than the top 2 as it used top 3.

In the following section, we have tabulated the feature extraction performance of our experiments as well as visualized the accuracy performance in the graphical form. In Table 8, 9 and 10 show that among all the algorithms the SVM, LR, and MLP provide the better performance.

- For 8 table, the average accuracy rate is 94.95%, 97.67%, 97.67%, 97.67%, 95.86%, 96.76% for RF, SVM, LR, MLP, XGB, and LGB. Among all SVM, LR, and MLP give the highest average accuracy than others. Hence, we select these top three algorithms for lung cancer to fit into the ensemble models and further analysis.
- For 9 table, the average accuracy rate is 98.29%, 99.57%, 99.57%, 99.57%, 97.79%, 98.64% for RF, SVM, LR, MLP, XGB, and LGB. Among all SVM, LR, and MLP give the highest average accuracy than others. Hence, we select these top three algorithms for colon cancer to fit into the ensemble models and further analysis.
- For 10 table, the average accuracy rate is 95.8%, 98.54%, 98.42%, 98.58%, 96.70%, 97.28% for RF, SVM, LR, MLP, XGB, and LGB. Among all SVM, LR, and MLP give the highest average accuracy than others. Hence, we select these top three algorithms for (lung and colon) cancer to fit into the ensemble models and for further

Algorithm	VGG16	VGG19	MobileNet	DenseNet169	DenseNet201	Average
RF	95.2	94.7	96.8	95.5	96.8	95.8
SVM	97.9	97.8	99.4	98.3	99.3	98.54
LR	98.0	97.6	99.2	98.1	99.2	98.42
MLP	98.4	97.9	99.0	98.3	99.3	98.58
XGB	95.6	95.6	97.0	97.5	97.8	96.7
LGB	96.1	96.2	98.5	97.7	97.9	97.28

Table 10: Accuracy performance of ml algorithms on TL for lung and colon cancer (in %)

analysis.

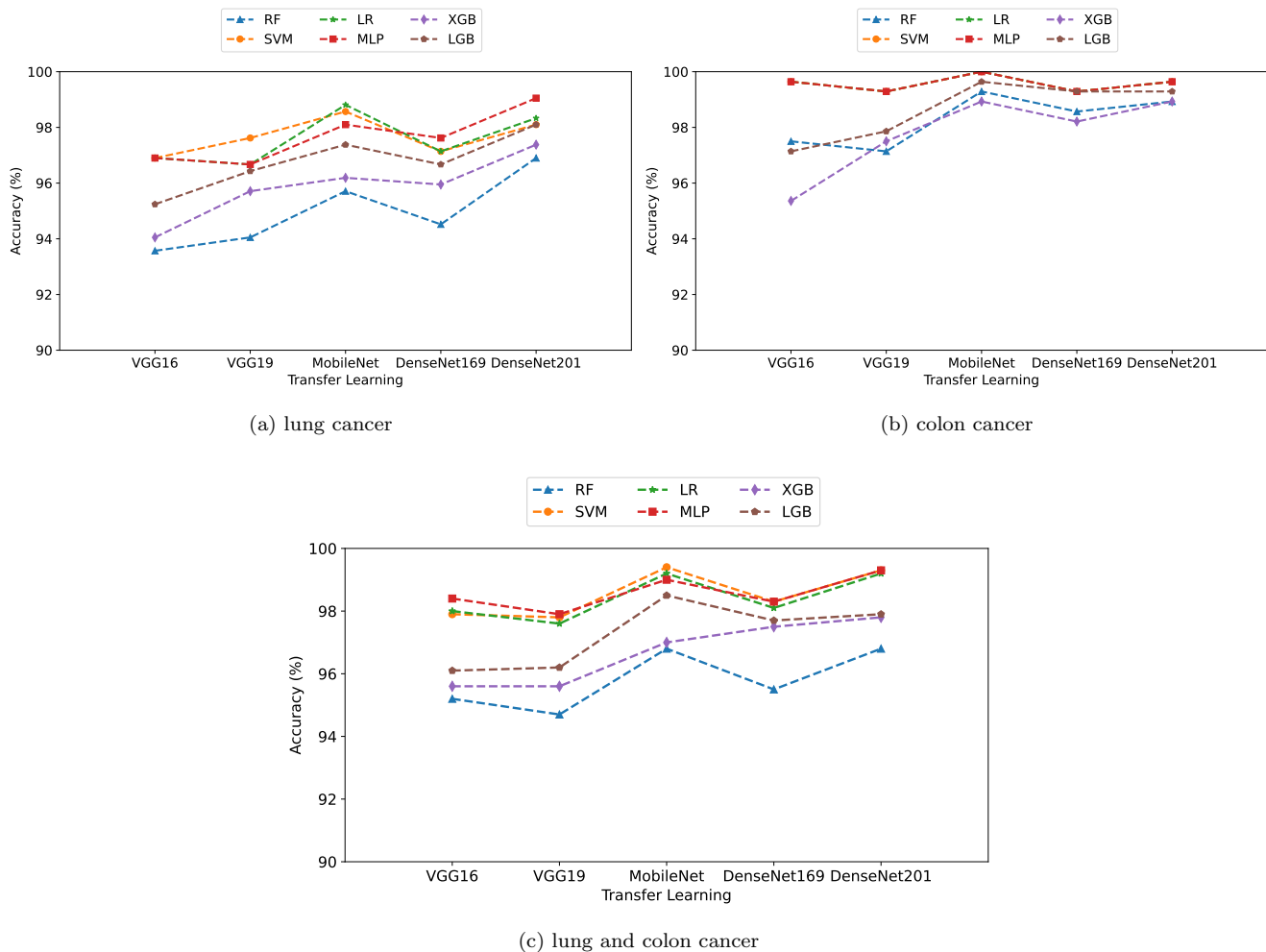


Figure 6: Accuracy performance analysis of ML algorithms on TL for lung and colon cancer

Fig 6 illustrates that for lung, colon, and lung and colon graphs, among all the ML algorithms SVM, LR, and MLP outperform for each TL model. As a result, we select the most performance gained algorithms from all ML algorithms such as SVM, LR, and MLP for lung, colon and lung and colon cancer.

After successfully filtering the high-performance ML algorithms, we fit these into our ensemble model to get better performance. For each dataset, we fit those selected top 3 selected ML algorithms and fit into the two ensemble voting classifiers namely majority (hard) and weighted average (soft). After that, we assess the effectiveness of our models for each dataset.

3.6. Ensemble Learning

Ensemble learning (EL), also known as multiple classifier or committee-based learning, is a way of training and integrating numerous learners to successfully deal with a problem (Zhou, 2016). During the last few generations, it has sparked a lot of attention, particularly in the AI and machine learning areas. It is not only justified and fairly efficient, but it is also incredibly adaptable in a broad variety of essential areas and contributes significantly, so this attention is pretty well deserved (Dietterich et al., 2002). Regarding majority rule voting, hard employs anticipated class labeling. Soft estimates each class label using the argmax where the intended function's maximum value is returned, of the summing of the estimated probabilities, which is ideal for just a group of well-calibrated learners (Pedregosa et al., 2011).

In soft voting, we forecast the class labels depending on the classifier's estimated probabilities (Kumari et al., 2021), where we used averaging the class probability (Raschka, 2015). In the implementation by default, it calculates the soft voting using a uniform value. Hence, the weight that is used in the weighted average process is a uniform value. Moreover, it has been used since the classifiers that we have used are well-calibrated which means the scores of the classifiers are in good agreement with probability estimations. The way of the soft voting procedure is shown in the following equation.

$$\hat{y} = \arg \max \sum_{j=1}^n (w_j p_j)$$

where, w_j is the weights of classifiers and p_j is the prediction of classifiers.

Fig. 7 illustrates the EL process with HPF, where the deep extracted features are fed into the different ML algorithms, and then by applying HPF we get three algorithms; after that, we apply EL to these filtering algorithms. In EL, the soft and hard voting algorithms are utilized to evaluate the performance. After getting the estimators from HPF, we use ensemble learning with the HPF algorithm. Where we used our estimators with hard and soft for hard and soft voting classifiers respectively.

4. Experimental setup and performance metrics

The experiments are carried out on a machine running Microsoft Windows 10 Pro, with an Intel(R) Core (TM) i3-6006U CPU running at 2.00GHz, 2000Mhz, 2 cores, 4 logical processors, and 120GB SSD, 1TB HDD, 8GB RAM and 26GB Virtual Memory. The experiment is carried out in Anaconda Navigator using a Jupyter notebook. To implement the suggested model, the Python programming language and various common libraries such as pandas, NumPy, Matplotlib, Seaborn, TensorFlow, Keras, Scikit-learn, and others are utilized.

Numerous performance metrics appraise our proposed model, including accuracy, recall, precision, f1-score, ROC curve, confusion matrix, MSE, MAE, and RMSE. The metrics for appraising the performance are formulated in the following:

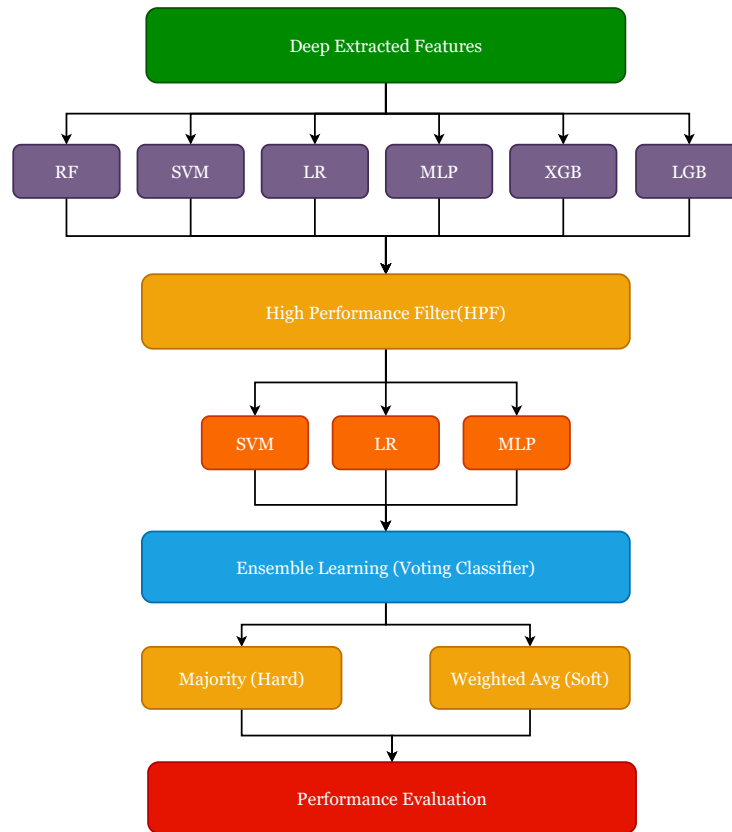


Figure 7: Ensemble learning approach with HPF

- The Confusion Matrix is a technique to assess machine learning classification efficiency. It is a table-like structure with four (TP, TN, FP, FN) combinations of predicted and actual values. Table 6 shows a confusion matrix where the TP (True Positive) denotes a correctly anticipated positive value, TN (True Negative) denotes a correctly projected negative value, FN (False Positive) gives an inaccurately forecasted positive value, and FN (False Negative) indicates an incorrectly predicted negative value. It is very useful in helping to determine accuracy, recall, precision, f1-score, and ROC curve.

	Actual positive	Actual negative
Predicted positive	TP	FP
Predicted negative	FN	TN

Table 11: Confusion Matrix

- Accuracy is the most obvious performance metric, and it is directly proportional of correctly predicted observations to total observations.

$$Accuracy = \frac{TP + TN}{TP + FP + FN + TN} \quad (2)$$

- The ratio between the correctly predicted positive value and the total number of predicted positive values is defined as precision. It is depicted as:

$$Precision = \frac{TP}{TP + FP} \quad (3)$$

- The ratio between the correctly predicted positive value and all numbers of actual values is defined as recall. It is depicted as:

$$Recall = \frac{TP}{TP + FN} \quad (4)$$

- The harmonic means of precision and recall values for a classification problem is defined as f1-score. f1-score is depicted as:

$$F1 - score = 2 * \frac{(precision * recall)}{(precision + recall)} \quad (5)$$

- The mean absolute error (MAE) is a metric for comparing errors within related measurements that describe a similar occurrence. It is an absolute inaccuracy of the arithmetic average of predicted and actual values (Willmott and Matsuura, 2005).

$$MAE = \frac{\sum_{i=1}^n pred(i) - act(i)}{n} \quad (6)$$

- The mean squared error (MSE) is a statistic that calculates the mean of the squared residuals, or the mean squared discrepancy between actual and forecast values. Because of variability or if the predictor does not allow for data that could generate a good prediction, the most important fact about MSE is that it is usually typically absolutely positive (rather than zero) (Lehmann and Casella, 2006) (Das et al., 2004).

$$MSE = \frac{\sum_{i=1}^n (pred(i) - act(i))^2}{n} \quad (7)$$

- The most commonly used evaluation metric in regression problems is the root mean square error (RMSE). It is premised on the notion that error is unbiased and seems to have a normal distribution. Outlier attributes have quite a massive effect on RMSE.

$$RMSE = \sqrt{\frac{\sum_{i=1}^n (pred(i) - act(i))^2}{n}} \quad (8)$$

where $pred(i)$ is the predicted value of i , $act(i)$ is the actual value of i , and n is the total number of values.

- ROC curves are two dimensional plots that are often used to analyze and examine the effectiveness of classifiers (Fawcett, 2004). ROC graphs clearly demonstrate a classifier's sensitivity or specificity exchange for all potential classification thresholds, enabling the grading and picking of classifiers based on particular user requirements, which are commonly linked with variable error costs and accuracy expectations (Krzanowski and Hand, 2009) (Vergara et al., 2008). AUC reflects the level of distinction while ROC is indeed a likelihood curve. It indicates how well the model can discriminate distinct categories. On the y-axis is the true positive rate, while on the x-axis is the false positive rate. AUC approaching 1 indicates that a predicted model is good at separability amongst class labels whereas approaching 0 indicates a lousy predicted model. In actuality, lousy signifies that the consequence is being mirrored (Narkhede, 2018). It's a strategy for visualizing the classification's efficiency (Gorunescu, 2011). Models with higher ROC curves are superior classifiers (Yulianto et al., 2019).

- K-fold Cross-Validation (CV) is a basic procedure for dividing a training set into k smaller sets. The strategy for each of the k "folds" is to utilize the folds as training data for a model, which is then verified using the remaining data, and the average of the values computed in the loop is then included as an evaluation metric using k-fold cross-validation.

Our cancer detection trials were carried out using a k-fold CV with a value of k=10. The dataset is partitioned into 80% for training and the rest of the 20% for testing in k-fold, and the dataset gets folded into 10 separate folds, each of which is used as a testing component throughout the folding process. The procedure of k-fold cross-validation is depicted in Fig. 8.

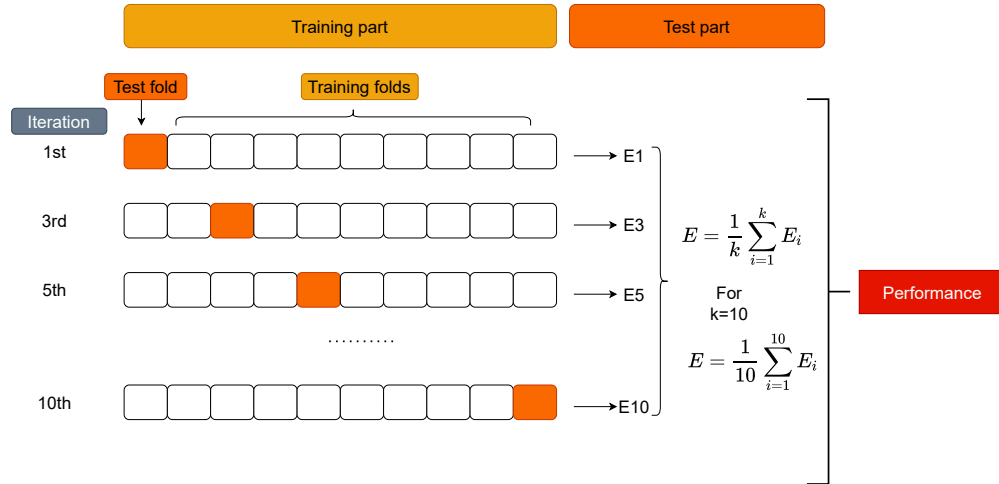


Figure 8: k-fold cross-validation process

5. Performance Evaluation and Analysis

This section analyzes the performance of different TL methods, followed by the analysis of our hybrid model based on the selected high-performance TL model and voting classifier model. We have found that among all TL models MobileNet model outperforms other models, and the soft voting classifier gives the highest performance than the hard voting classifier.

5.1. Performance evaluation of lung cancer

Table 12 and Fig. 9 illustrate the performance of different TL models based on hard and soft voting in tabular format and visual graphical bar chart respectively. From Table 12 we can see that the average accuracy rate for hard and soft voting classifiers is 97.66% and 98.05% respectively. Moreover in Fig. 9 for the graphical bar chart, we can see that the graphical upper bar is soft and lower is hard voting classifier, where for VGG16 96.9%, 97.14%; for VGG19 96.9%, 97.14%; for MobileNet 98.81, 99.05%; for DenseNet169 98.57%, 99.05%; for DenseNet201 97.66%, 98.05% for hard and soft respectively. Hence, it's so clear that the soft voting classifier outperforms better than hard voting classifier. So, we select a soft voting classifier in our proposed model for the lung cancer dataset.

Table 13 shows the performance of different TL models in tabular format and insights that the MobileNet TL model gives the highest average performance among all other TL models where the average accuracy rate for VGG16,

Voting Classifier	VGG16	VGG19	MobileNet	DenseNet169	DenseNet201	Average
Hard	96.9	96.9	98.81	97.14	98.57	97.66
Soft	97.14	97.14	99.05	97.86	99.05	98.05

Table 12: Accuracy performance analysis for ensemble models on lung cancer dataset

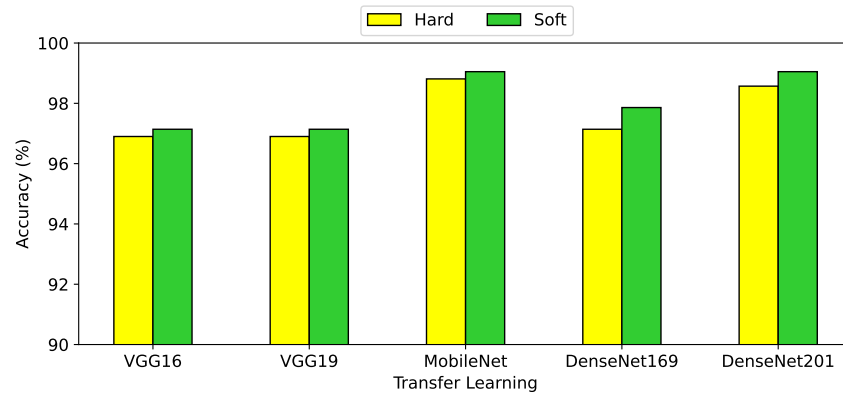


Figure 9: Accuracy performance analysis for ensemble models on lung cancer dataset

VGG19, MobileNet, DenseNet169, and DenseNet201 is 97.02%, 97.02%, 98.93%, 97.5%, and 98.81% respectively. Besides in Fig. 9, we can see that the graphical upper bar chart is pointed to the MobileNet as having the highest accuracy rate among others. So, we select MobileNet in our proposed model for the lung cancer dataset.

In Fig. 10 we can observe the performance of the MobileNet TL model. In performance bar chart, we can visualize that the accuracy, precision, precision, recall, f1-score are 99.05%, 99.03%, 99.06%, 99.04% respectively and in error bar chart, the MAE, MSE, RMSE are 0.95%, 0.95%, 9.67% respectively. we can insight that the accuracy rate is much higher and the error rate is much lower. In Fig. 11 we can see the confusion matrix and ROC Curve for the MobileNet TL model. In the Confusion Matrix, we can see that the TP rate is 30.48%, 34.29%, 34.29%; TN rate is 68.81%, 64.76%, 65.48%; FP rate is 0.48%, 0.48%, 0.0%; FN rate is 0.24%, 0.48%, 0.24% for lung squamous cell carcinoma, lung adenocarcinomas, and lung benign tissue respectively. Here, we can insight that the true positive and true negative rate is very high, and false positive and false negative are very low. The large number of TP and TN than FP and FN is a very crucial point for machine learning models to detect lung cancer. In the ROC Curve, we can see that the AUC score is 99.96% for the soft voting classifier and the curve is very well fitted in the graph as it is close to 1 which is a sign of a better performance model.

TL	VGG16	VGG19	MobileNet	DenseNet169	DenseNet201
Hard	96.9	96.9	98.81	97.14	98.57
Soft	97.14	97.14	99.05	97.86	99.05
Average	97.02	97.02	98.93	97.5	98.81

Table 13: Accuracy performance analysis for TL models on lung cancer dataset

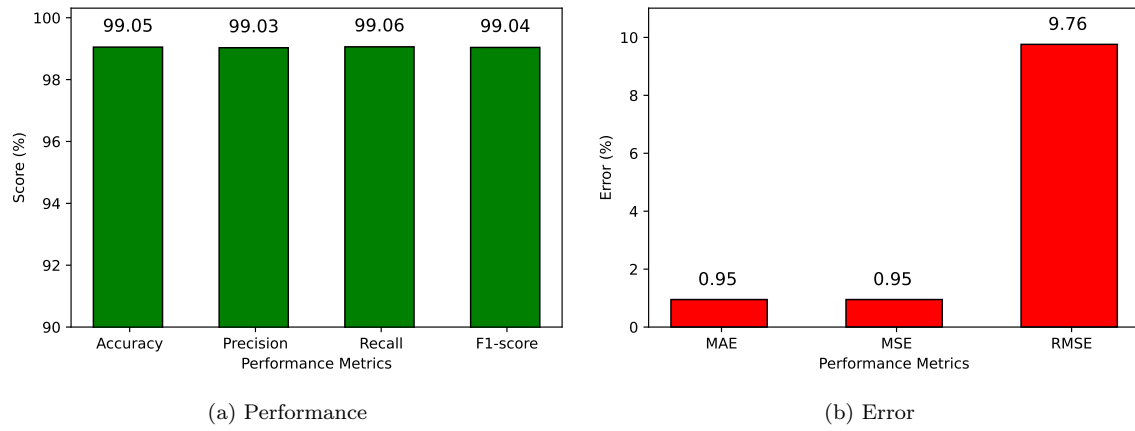


Figure 10: Performance analysis for ensemble soft voting classifier for lung cancer

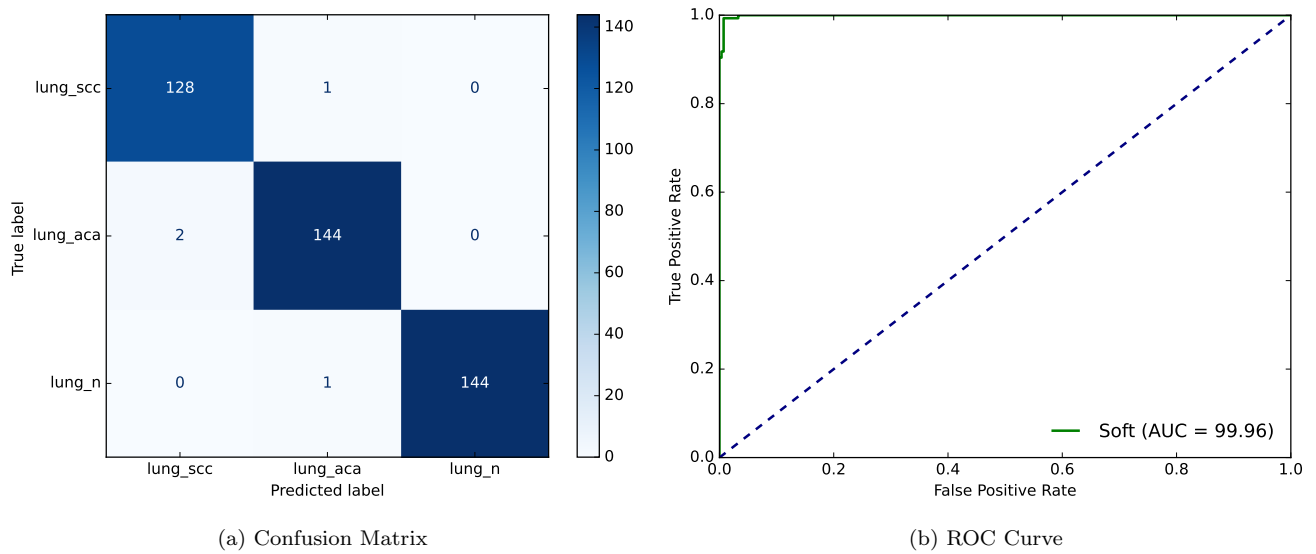


Figure 11: Confusion matrix and ROC Curve for ensemble soft voting classifier for lung cancer

Voting Classifier	VGG16	VGG19	MobileNet	DenseNet169	DenseNet201	Average
Hard	99.64	99.29	100	99.29	99.64	99.57
Soft	99.64	99.29	100	99.29	99.64	99.57

Table 14: Accuracy performance analysis for ensemble models on colon cancer dataset

TL	VGG16	VGG19	MobileNet	DenseNet169	DenseNet201
Hard	99.64	99.29	100	99.29	99.64
Soft	99.64	99.29	100	99.29	99.64
Average	99.64	99.29	100	99.29	99.64

Table 15: Accuracy performance analysis for TL models on colon cancer dataset

5.2. Performance evaluation of colon cancer

Table 14 and Fig. 12 illustrate the performance of different TL models based on hard and soft voting in tabular format and visual graphical bar chart respectively. From Table 14, we can see that the average accuracy rate for hard and soft voting classifiers are 99.57% and 99.57% respectively. Moreover in Fig. 12 the graphical bar chart, we can see that the graphical upper bar is soft and hard voting classifiers with the same level, where 99.64%, 99.29%, 100%, 99.29%, 99.64%, 99.57% for VGG16, VGG19, MobileNet, DenseNet169, and DenseNet201 respectively for both hard and soft voting classifier. As we know soft voting achieves an accuracy rate based on probabilities in lieu of class labels. So, we select a soft voting classifier in our proposed model for the colon cancer dataset.

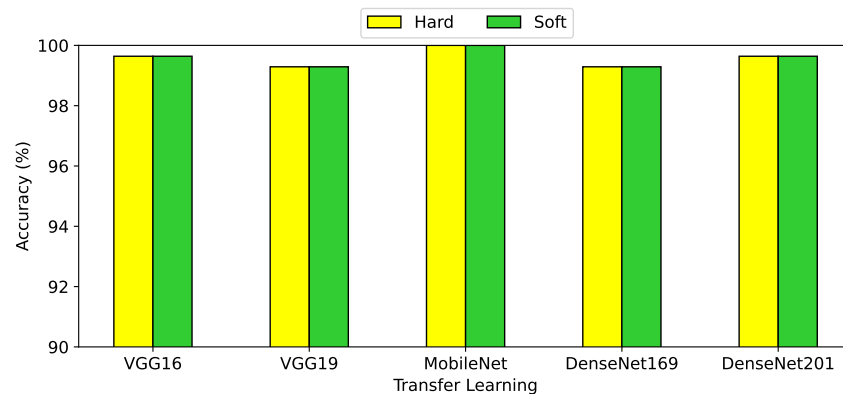


Figure 12: Accuracy performance analysis for ensemble models on colon cancer dataset

Table 15 shows the performance of different TL models in tabular format and insights that the MobileNet TL model gives the highest average performance among all other TL models where the average accuracy rate for VGG16, VGG19, MobileNet, DenseNet169, and DenseNet201 is 99.64%, 99.29%, 100%, 99.29%, and 99.64% respectively. Besides in Fig. 12, we can see that the graphical upper bar chart is pointed to the MobileNet as having the highest accuracy rate among others. So, we select MobileNet in our proposed model for the lung cancer dataset.

In Fig. 13, we can observe the performance of the MobileNet TL model. In the performance bar chart, we can visualize that the accuracy, precision, precision, recall, and f1-score are 100% for each and in the error bar chart,

the MAE, MSE, and RMSE are 0% for each. we can insight that the accuracy rate is the highest and the error rate is zero. In Fig. 14, we can see the confusion matrix and ROC Curve for the MobileNet TL model. In the Confusion Matrix, we can see that the TP rate is 44.29%; TN rate is 55.71%; FP rate is 0.0%; FN rate is 0.0% for colon cancer (colon adenocarcinomas and colon benign tissue) respectively. Here, we can observe that the true positive and true negative rate is very high, and false positive and false negative is very low. The large number of TP and TN than FP and FN is a very crucial point for machine learning models to detect colon cancer. In the ROC Curve, we can see that the AUC score is 100% for the soft voting classifier and the curve is very well fitted in the graph as it is 1 which is a sign of a perfect performance model.

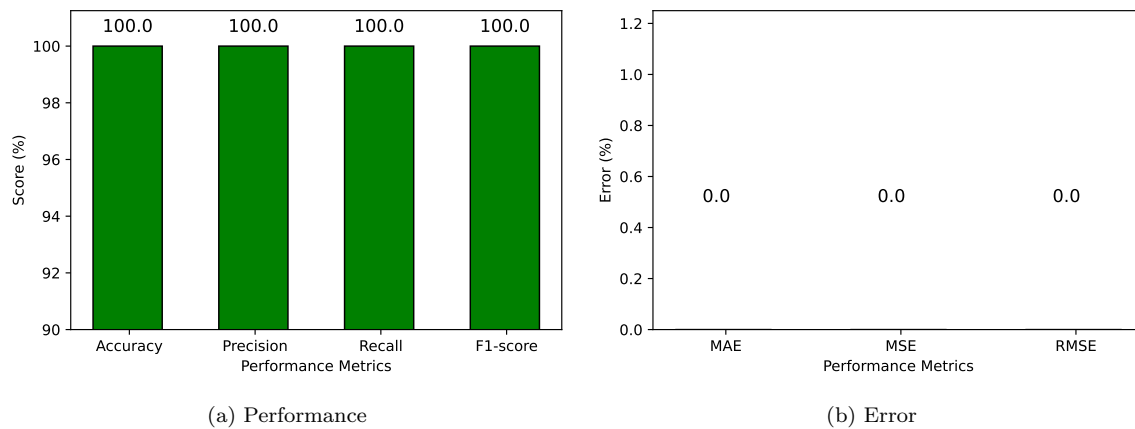


Figure 13: Performance analysis for ensemble soft voting classifier for colon cancer

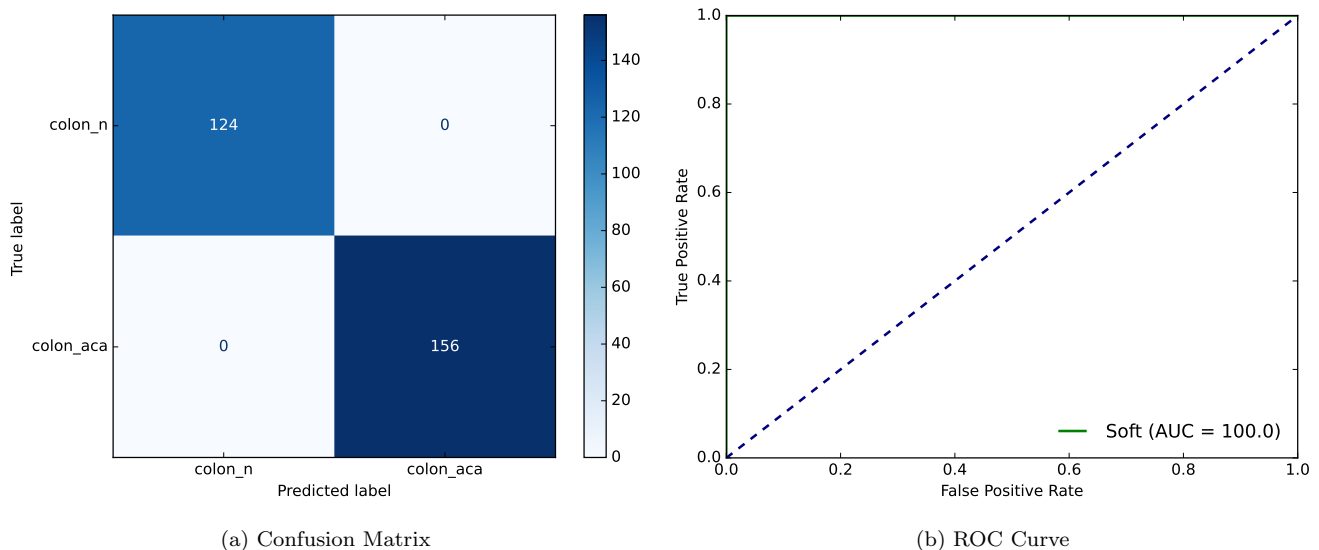


Figure 14: Confusion matrix and ROC Curve for ensemble soft voting classifier for colon cancer

The accuracy rate of colon cancer is achieved at 100% which is a very promising result ever in colon cancer detection. With the help of proper pre-processing, feature extraction and efficient ensemble soft voting classifier give these good results. Among all transfer learning models, the MobileNet model gives better feature extraction

Voting Classifier	VGG16	VGG19	MobileNet	DenseNet169	DenseNet201	Average
Hard	98.3	98.0	99.3	98.3	99.2	98.62
Soft	98.4	98.1	99.3	98.5	99.3	98.72

Table 16: Accuracy performance analysis for ensemble models on (lung and colon) cancer dataset

than others so the accuracy label reached the highest ever. As we already know that ensemble learning is a multiple classifiers system (Gudivada et al., 2016). It's better to get a prediction from multiple models than a single model, which makes a model more robust and efficient. Hence, we have used the ensemble method to get a pleasant model with good performance results.

5.3. Performance evaluation of cancer (lung and colon)

Table 16 and Fig. 15 illustrate the performance of different TL models based on hard and soft voting in tabular format and visual graphical bar chart respectively. From Table 16, we can see that the average accuracy rate for hard and soft voting classifiers is 98.62% and 98.72% respectively. Moreover in Fig. 15 for the graphical bar chart, we can see that the graphical upper bar is soft and lower is hard voting classifier, where for VGG16 98.3%, 98.4%; for VGG19 98.0%, 98.1%; for MobileNet 99.30, 99.30%; for DenseNet169 99.3%, 98.5%; for DenseNet201 99.2%, 99.3% for hard and soft respectively. Hence, it's so clear that the soft voting classifier outperforms better than hard voting classifier. So, we select a soft voting classifier in our proposed model for the (lung and colon) cancer dataset.

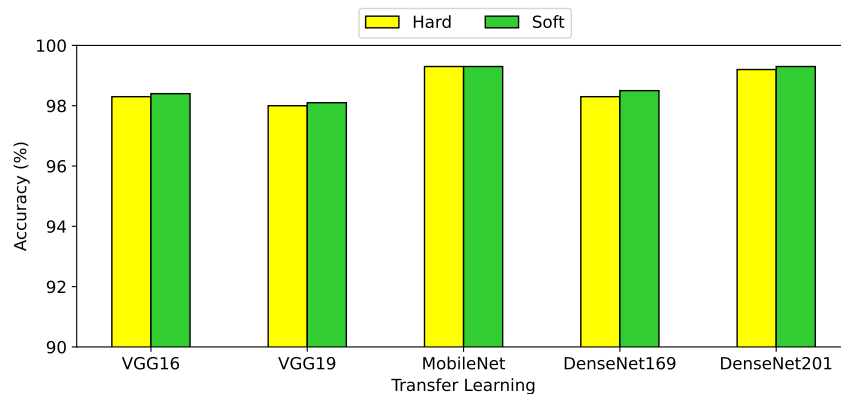


Figure 15: Accuracy performance analysis for ensemble models on (lung & cancer) cancer dataset

Table 17 shows the performance of different TL models in tabular format and insights that the MobileNet TL model gives the highest average performance among all other TL models where the average accuracy rate for VGG16, VGG19, MobileNet, DenseNet169, and DenseNet201 is 98.35%, 98.05%, 99.30%, 98.40%, and 99.25% respectively. Besides in Fig. 15, we can see that the graphical upper bar chart is pointed to the MobileNet as having the highest accuracy rate among others. So, we select MobileNet in our proposed model for the (lung and colon) cancer dataset.

In Fig. 16, we can observe the performance of the MobileNet TL model. In performance bar chart, we can visualize that the accuracy, precision, precision, recall, f1-score are 99.30%, 99.27%, 99.27%, 99.26% respectively and in error bar chart, the MAE, MSE, RMSE are 0.7%, 0.7%, 8.37% respectively. we can insight that the accuracy rate is much higher and the error rate is much lower. In Fig. 17, we can see the confusion matrix and ROC Curve

TL	VGG16	VGG19	MobileNet	DenseNet169	DenseNet201
Hard	98.3	98.0	99.3	98.3	99.2
Soft	98.4	98.1	99.3	98.5	99.3
Average	98.35	98.05	99.3	98.4	99.25

Table 17: Accuracy performance analysis for TL models on cancer (lung and colon) dataset

for the MobileNet TL model. In the Confusion Matrix, we can see that the TP rate is 19.1%, 18.1%, 21.8%, 22.1%, 18.2%; TN rate is 80.3%, 81.3%, 78.2%, 77.8%, 81.7%; FP rate is 0.5%, 0.1%, 0.0%, 0.0%, 0.1%; FN rate is 0.1%, 0.5%, 0.0%, 0.1%, 0.0% for lung squamous cell carcinoma, lung adenocarcinomas, lung benign, colon benign, and colon adenocarcinomas respectively. Here, we can observe that the true positive and true negative rate is very high, and false positive and false negative is very low. The large number of TP and TN than FP and FN is a very crucial point for machine learning models to detect lung cancer. In the ROC Curve, we can see that the AUC score is 99.99% for the soft voting classifier and the curve is very well fitted in the graph as it is close to 1 which is a sign of a better performance model.

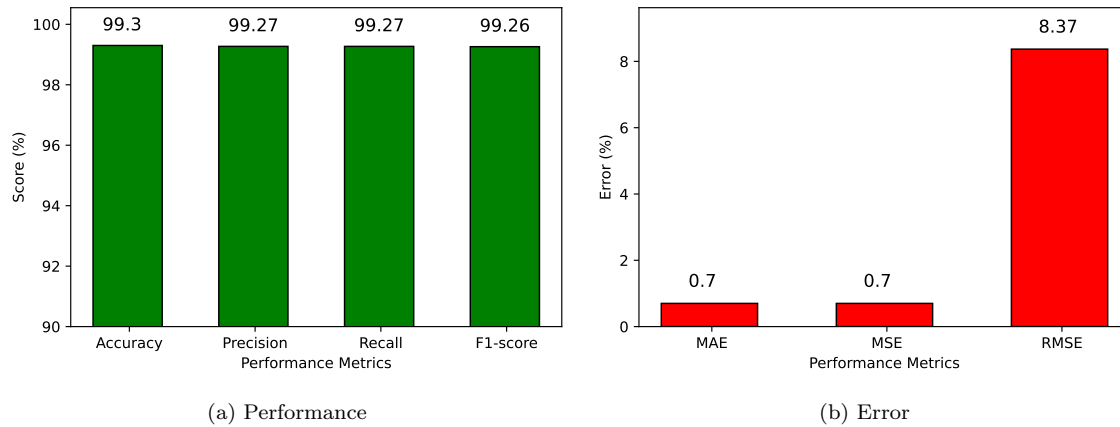


Figure 16: Performance analysis for ensemble soft voting classifier for (lung and colon) cancer

5.4. Discussion

In our proposed model, we have evaluated our model using deep feature extraction and ensemble learning approach based on high-performance filtering and locating the best TL models for feature extraction as well as ensemble models providing a better accuracy rate. The proposed method is compared with the methods in other papers and significantly achieves the highest accuracy than others. The comparison study of our proposed model with others is illustrated in tabular format in Table 18. In comparison, the dataset that we have utilized and compared with others is the same dataset (HPI LC25000) and the number of images employing the methods is slightly different. The similar datasets with a tiny variation of datasets make the comparison as a fair comparison to estimate the performance.

In our experiments, we achieve the highest performance accuracy rate: lung dataset 99.05%; colon dataset 100%;

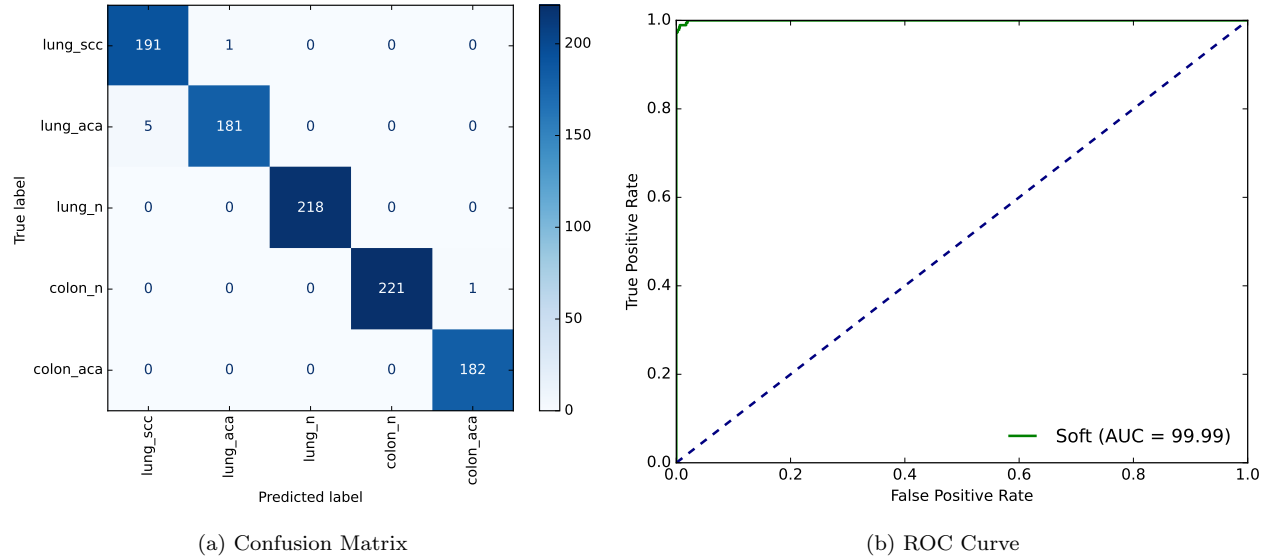


Figure 17: Confusion matrix and ROC Curve for ensemble soft voting classifier for (lung and colon) cancer

(lung and colon) dataset 99.30% which outperforms the others. Hence, Among all of the preceding in both lung and colon cancer detection, our proposed hybrid model significantly achieves the highest accuracy.

5.5. Speed and complexity analysis

The prediction speed is the time needs to predict cancer and the resource usage cost is simply the complexity of the ML model. The time and space complexity, time requires to execute an operation and the space requires to store data, are very important to determine the efficiency of any algorithm (Zhu et al., 2022) (Abdelsamea et al., 2019). In the following section, we have mentioned the prediction speed and complexity analysis. The diagnosis of lung and colon cancer has an overall computational complexity of $O(n^2)$. In our method, we take the estimators from the HPF process that requires $O(n^2)$ and build an ensemble learning method that consumes $O(n)$ time to complete, so the overall complexity is $O(n^2) + O(n) \sim O(n^2)$. The other ML models such as RF, SVM, LR, MLP, XGB, and LGB take $O(t \log n)$, $O(n^2)$, $O(m)$, $O(n^2)$, $O(td)$, and $O(tl)$ respectively, where n is the number of data points, m is the number of features, t denotes the number of trees, l is the level of the trees, and d is the depth of the trees. On the other hand, diagnosing lung and colon cancer has an overall space complexity of $O(n^2)$. In our method, we take the estimators from the HPF process that requires $O(n^2)$ and build an ensemble learning method that consumes $O(n)$ time to complete, so the overall complexity is $O(n^2) + O(n) \sim O(n^2)$. The other ML models such as RF, SVM, LR, MLP, XGB, and LGB take $O(et)$, $O(km)$, $O(m)$, $O(n^2)$, $O(et+g)$, and $O(et+l)$ respectively, where n is the number of data points, m is the number of features, t denotes the number of trees, e is the number of nodes, l is the level of the trees, and g is the output values for each leaf in decision trees. The analysis of time and space complexity is shown in Table 19. Furthermore, we estimated the prediction time (sec) on the system having 4 cores CPU, 16GB RAM, and 1 GPU employed by our proposed model while working with the 420 (lung), 280 (colon), and 1000 (lung and colon) testing images. For lung, colon, and (lung and colon) cancer, our approach encloses the prediction times of 2s, 0s, and 14s, respectively. The prediction time grows as the number of testing images grows. The analysis of prediction time is shown in Table 20.

SI. No.	Author	Approach	Dataset	Accuracy (In %)
1	Hatuwal and Thapa (2020)	CNN		97.20
2	Mangal et al. (2020)	SCNN	HPI Lung (Borkowski et al., 2019)	97.89
3	Shandilya and Nayak (2022)	CAD		98.67
4	Our proposed model	Hybrid Model		99.05
		CNN (MaxPool)		97.49
5	Tasnim et al. (2021)	CNN (AvgPool)		95.48
		MobileNetV2		99.67
6	Liang et al. (2020)	MFF-CNN	HPI Colon (Borkowski et al., 2019)	96
7	Mangal et al. (2020)	SCNN		96.61
8	Qasim et al. (2020)	CNN		99.6
9	Yildirim and Cinar (2022)	MA ColonNET		99.75
10	Our proposed model	Hybrid Model		100
11	Masud et al. (2021)	2D FW+ CNN		96.33
12	Sikder et al. (2021)	CNN	HPI Lung and Colon (Borkowski et al., 2019)	93
13	Adu et al. (2021)	DHS-CapsNet		99.23
14	Our proposed model	Hybrid Model		99.30

Table 18: Comparison analysis of lung and colon cancer

Method	RF	SVM	LR	MLP	XGB	LGB	HPF	EL	Proposed Model
Time Complexity	$O(t \log n)$	$O(n^2)$	$O(m)$	$O(n^2)$	$O(td)$	$O(tl)$	$O(n^2)$	$O(n)$	$O(n^2)$
Space Complexity	$O(et)$	$O(km)$	$O(m)$	$O(n^2)$	$O(et+g)$	$O(et+g)$	$O(n^2)$	$O(n)$	$O(n^2)$

Table 19: The time and space complexity of the ML Models

Method	RF	SVM	LR	MLP	XGB	LGB	Proposed Model
Lung Dataset	0	2	0	0	0	0	2
Colon Dataset	0	0	0	0	0	0	0
Lung and Colon Dataset	0	14	0	0	0	0	14

Table 20: The prediction time (sec) of the ML Models

6. Conclusion

This paper presented a hybrid model for lung and colon cancer detection that integrates pre-processing, k-fold (10 fold) cross-validation, feature extraction using several TL models, devoting ML algorithms, picking the best algorithms using HPF and suit into ensemble learning models. After that select the best ensemble voting classifier model and most suitable feature extraction TL model. Moreover, we employed five TL models in feature extraction such as VGG16, VGG19, MobileNet, DenseNet169, and DenseNet201. At the same time, for evaluating the performance using ML algorithms, we used six popular algorithms namely RF, SVM, LR, MLP, XGB, and LGB. This extensive development has been evaluated by a set of performance metrics such as accuracy, recall, precision, f1-score, ROC Curve, MAE, MSE, and RMSE. After considering our experiments, we choose the MobileNet model

for Feature extraction among all TL models, and an ensemble soft voting classifier from two ensemble models to evaluate our performance. Our experiment uses the LC25000 lung and colon histopathological image datasets and finds that our hybrid model is best suited for diagnosing lung and colon cancer. In terms of performance metrics, our suggested model performed admirably and outperformed other techniques. The accuracy rate for lung cancer detection is 99.05%; for colon cancer, it is 100%, and for lung and colon cancer, it is 99.30%. We believe our developed model could be applicable in clinics for the automated diagnosis of lung and colon cancers. Even though the architecture delivers greater accuracy, further sophisticated work on image pre-processing and the proposed model would make the task more adequate. A good feature extraction leads to producing better performance results if the image is clear and sharp to extract features is an inadequacy in this paper. In the future, we will go to explore the newly available lung and colon cancer dataset with efficient preprocessing to build a deep learning approach to enhance the performance to detect lung and colon cancer.

References

- Abbasi, A. A., Hussain, L., Awan, I. A., Abbasi, I., Majid, A., Nadeem, M. S. A., and Chaudhary, Q.-A. (2020). Detecting prostate cancer using deep learning convolution neural network with transfer learning approach. *Cognitive Neurodynamics*, 14(4):523–533.
- Abdelsamea, M. M., Pitiot, A., Grineviciute, R. B., Besusparis, J., Laurinavicius, A., and Ilyas, M. (2019). A cascade-learning approach for automated segmentation of tumour epithelium in colorectal cancer. *Expert Systems with Applications*, 118:539–552.
- Adeoye, J., Hui, L., Koohi-Moghadam, M., Tan, J. Y., Choi, S.-W., and Thomson, P. (2022). Comparison of time-to-event machine learning models in predicting oral cavity cancer prognosis. *International journal of medical informatics*, 157:104635.
- Adu, K., Yu, Y., Cai, J., Owusu-Agyemang, K., Twumasi, B. A., and Wang, X. (2021). Dhs-capsnet: Dual horizontal squash capsule networks for lung and colon cancer classification from whole slide histopathological images. *International Journal of Imaging Systems and Technology*.
- Ahsan, M., Gomes, R., Chowdhury, M., Nygard, K. E., et al. (2021). Enhancing machine learning prediction in cybersecurity using dynamic feature selector. *Journal of Cybersecurity and Privacy*, 1(1):199–218.
- Alkhatib, K. and Abualigah, S. (2020). Predictive model for cutting customers migration from banks: Based on machine learning classification algorithms. In *2020 11th International Conference on Information and Communication Systems (ICICS)*, pages 303–307. IEEE.
- Alsinglawi, B., Alshari, O., Alorjani, M., Mubin, O., Alnajjar, F., Novoa, M., and Darwish, O. (2022). An explainable machine learning framework for lung cancer hospital length of stay prediction. *Scientific reports*, 12(1):1–10.
- Assegie, T. A. (2021). An optimized k-nearest neighbor based breast cancer detection. *Journal of Robotics and Control (JRC)*, 2(3):115–118.

- Baldi, P. (2018). Deep learning in biomedical data science. *Annual review of biomedical data science*, 1:181–205.
- Bansal, M., Kumar, M., Sachdeva, M., and Mittal, A. (2021). Transfer learning for image classification using vgg19: Caltech-101 image data set. *Journal of Ambient Intelligence and Humanized Computing*, pages 1–12.
- Borkowski, A. A., Bui, M. M., Thomas, L. B., Wilson, C. P., DeLand, L. A., and Mastorides, S. M. (2019). Lung and colon cancer histopathological image dataset (lc25000). *arXiv preprint arXiv:1912.12142*.
- Breiman, L. (2001). Random forests. *Machine learning*, 45(1):5–32.
- Bukhari, S. U. K., Asmara, S., Bokhari, S. K. A., Hussain, S. S., Armaghan, S. U., and Shah, S. S. H. (2020). The histological diagnosis of colonic adenocarcinoma by applying partial self supervised learning. *medRxiv*.
- Castro, W., Oblitas, J., Santa-Cruz, R., and Avila-George, H. (2017). Multilayer perceptron architecture optimization using parallel computing techniques. *PloS one*, 12(12):e0189369.
- Chen, M., Huang, S., Huang, Z., and Zhang, Z. (2021). Detection of lung cancer from pathological images using cnn model. In *2021 IEEE International Conference on Computer Science, Electronic Information Engineering and Intelligent Control Technology (CEI)*, pages 352–358. IEEE.
- Chen, T. and Guestrin, C. (2016). Xgboost: A scalable tree boosting system. In *Proceedings of the 22nd acm sigkdd international conference on knowledge discovery and data mining*, pages 785–794.
- Chen, T. and He, T. (2015). Higgs boson discovery with boosted trees. In *NIPS 2014 workshop on high-energy physics and machine learning*, pages 69–80. PMLR.
- Chougrad, H., Zouaki, H., and Alheyane, O. (2020). Multi-label transfer learning for the early diagnosis of breast cancer. *Neurocomputing*, 392:168–180.
- Ciregan, D., Meier, U., and Schmidhuber, J. (2012). Multi-column deep neural networks for image classification. In *2012 IEEE conference on computer vision and pattern recognition*, pages 3642–3649. IEEE.
- Das, H., Naik, B., and Behera, H. (2020). An experimental analysis of machine learning classification algorithms on biomedical data. In *Proceedings of the 2nd International Conference on Communication, Devices and Computing*, pages 525–539. Springer.
- Das, K., Jiang, J., and Rao, J. (2004). Mean squared error of empirical predictor. *The Annals of Statistics*, 32(2):818–840.
- De Matos, J., Britto, A. d. S., Oliveira, L. E., and Koerich, A. L. (2019). Double transfer learning for breast cancer histopathologic image classification. In *2019 International Joint Conference on Neural Networks (IJCNN)*, pages 1–8. IEEE.
- Deniz, E., Şengür, A., Kadiroğlu, Z., Guo, Y., Bajaj, V., and Budak, Ü. (2018). Transfer learning based histopathologic image classification for breast cancer detection. *Health information science and systems*, 6(1):1–7.
- Dietterich, T. G. et al. (2002). Ensemble learning. *The handbook of brain theory and neural networks*, 2(1):110–125.

- Fawcett, T. (2004). Roc graphs: Notes and practical considerations for researchers. *Machine learning*, 31(1):1–38.
- fchollet (2021). Transfer learning & fine-tuning. https://keras.io/guides/transfer_learning/. Accessed: 2021-12-22.
- Garg, S. and Garg, S. (2020). Prediction of lung and colon cancer through analysis of histopathological images by utilizing pre-trained cnn models with visualization of class activation and saliency maps. In *2020 3rd Artificial Intelligence and Cloud Computing Conference*, pages 38–45.
- Godkhindi, A. M. and Gowda, R. M. (2017). Automated detection of polyps in ct colonography images using deep learning algorithms in colon cancer diagnosis. In *2017 International Conference on Energy, Communication, Data Analytics and Soft Computing (ICECDS)*, pages 1722–1728. IEEE.
- Gorunescu, F. (2011). *Data Mining: Concepts, models and techniques*, volume 12. Springer Science & Business Media.
- Grömping, U. et al. (2006). Relative importance for linear regression in r: the package relaimpo. *Journal of statistical software*, 17(1):1–27.
- Gu, J., Wang, L., Wang, H., and Wang, S. (2019). A novel approach to intrusion detection using svm ensemble with feature augmentation. *Computers & Security*, 86:53–62.
- Gudivada, V. N., Irfan, M., Fathi, E., and Rao, D. (2016). Cognitive analytics: Going beyond big data analytics and machine learning. In *Handbook of statistics*, volume 35, pages 169–205. Elsevier.
- Hatuwal, B. K. and Thapa, H. C. (2020). Lung cancer detection using convolutional neural network on histopathological images. *Int. J. Comput. Trends Technol*, 68:21–24.
- Hijab, A., Rushdi, M. A., Gomaa, M. M., and Eldeib, A. (2019). Breast cancer classification in ultrasound images using transfer learning. In *2019 Fifth International Conference on Advances in Biomedical Engineering (ICABME)*, pages 1–4. IEEE.
- Howard, A. G., Zhu, M., Chen, B., Kalenichenko, D., Wang, W., Weyand, T., Andreetto, M., and Adam, H. (2017). Mobilenets: Efficient convolutional neural networks for mobile vision applications. *arXiv preprint arXiv:1704.04861*.
- Huang, G., Liu, Z., Van Der Maaten, L., and Weinberger, K. Q. (2017). Densely connected convolutional networks. In *Proceedings of the IEEE conference on computer vision and pattern recognition*, pages 4700–4708.
- Hussain, L., Almarashi, M. S., Aziz, W., Habib, N., and Saif Abbasi, S.-U.-R. (2021). Machine learning-based lungs cancer detection using reconstruction independent component analysis and sparse filter features. *Waves in Random and Complex Media*, pages 1–26.
- Kandaswamy, C., Silva, L. M., Alexandre, L. A., and Santos, J. M. (2016). High-content analysis of breast cancer using single-cell deep transfer learning. *Journal of biomolecular screening*, 21(3):252–259.

- Karen Simonyan, A. Z. (2021). Very deep convolutional networks for large-scale image recognition. <https://arxiv.org/abs/1409.1556>. Accessed: 2021-12-22.
- Ke, G., Meng, Q., Finley, T., Wang, T., Chen, W., Ma, W., Ye, Q., and Liu, T.-Y. (2017). Lightgbm: A highly efficient gradient boosting decision tree. *Advances in neural information processing systems*, 30:3146–3154.
- Khan, S., Islam, N., Jan, Z., Din, I. U., and Rodrigues, J. J. C. (2019). A novel deep learning based framework for the detection and classification of breast cancer using transfer learning. *Pattern Recognition Letters*, 125:1–6.
- Krzanowski, W. J. and Hand, D. J. (2009). *ROC curves for continuous data*. Crc Press.
- Kumari, S., Kumar, D., and Mittal, M. (2021). An ensemble approach for classification and prediction of diabetes mellitus using soft voting classifier. *International Journal of Cognitive Computing in Engineering*, 2:40–46.
- Lehmann, E. L. and Casella, G. (2006). *Theory of point estimation*. Springer Science & Business Media.
- Lenz, S., Hess, M., and Binder, H. (2019). Unsupervised deep learning on biomedical data with boltzmannmachines. *jl. bioRxiv*, page 578252.
- Liang, M., Ren, Z., Yang, J., Feng, W., and Li, B. (2020). Identification of colon cancer using multi-scale feature fusion convolutional neural network based on shearlet transform. *IEEE Access*, 8:208969–208977.
- Lin, Z. and Guo, W. (2021). Cotton stand counting from unmanned aerial system imagery using mobilenet and centernet deep learning models. *Remote Sensing*, 13(14):2822.
- Lyon, F. I. A. f. R. o. C. (2020). Global cancer observatory: Cancer today. <https://gco.iarc.fr/today/home>. Accessed: 2022-01-25.
- Mangal, S., Chaurasia, A., and Khajanchi, A. (2020). Convolution neural networks for diagnosing colon and lung cancer histopathological images. *arXiv preprint arXiv:2009.03878*.
- Masud, M., Sikder, N., Nahid, A.-A., Bairagi, A. K., and AlZain, M. A. (2021). A machine learning approach to diagnosing lung and colon cancer using a deep learning-based classification framework. *Sensors*, 21(3):748.
- Mohammadi, M.-R., Hadavimoghaddam, F., Pourmahdi, M., Atashrouz, S., Munir, M. T., Hemmati-Sarapardeh, A., Mosavi, A. H., and Mohaddespour, A. (2021). Modeling hydrogen solubility in hydrocarbons using extreme gradient boosting and equations of state. *Scientific reports*, 11(1):1–20.
- Narkhede, S. (2018). Understanding auc-roc curve. *Towards Data Science*, 26:220–227.
- Nishio, M., Nishio, M., Jimbo, N., and Nakane, K. (2021). Homology-based image processing for automatic classification of histopathological images of lung tissue. *Cancers*, 13(6):1192.
- Onan, A. (2015). On the performance of ensemble learning for automated diagnosis of breast cancer. In *Artificial intelligence perspectives and applications*, pages 119–129. Springer.
- Organization, W. H. (2022). Cancer. <https://www.who.int/news-room/fact-sheets/detail/cancer>. Accessed: 2022-25-01.

- Pan, X., Zhu, L., Fan, Y.-X., and Yan, J. (2014). Predicting protein–rna interaction amino acids using random forest based on submodularity subset selection. *Computational biology and chemistry*, 53:324–330.
- Papp, L., Spielvogel, C., Grubmüller, B., Grahovac, M., Krajnc, D., Ecsedi, B., Sareshgi, R., Mohamad, D., Hamboeck, M., Rausch, I., et al. (2021). Supervised machine learning enables non-invasive lesion characterization in primary prostate cancer with [68 ga] ga-psma-11 pet/mri. *European journal of nuclear medicine and molecular imaging*, 48(6):1795–1805.
- Park, C., Took, C. C., and Seong, J.-K. (2018). Machine learning in biomedical engineering.
- Pedregosa, F., Varoquaux, G., Gramfort, A., Michel, V., Thirion, B., Grisel, O., Blondel, M., Prettenhofer, P., Weiss, R., Dubourg, V., Vanderplas, J., Passos, A., Cournapeau, D., Brucher, M., Perrot, M., and Duchesnay, E. (2011). Scikit-learn: Machine learning in Python. *Journal of Machine Learning Research*, 12:2825–2830.
- Phankokkruad, M. (2021). Ensemble transfer learning for lung cancer detection. In *2021 4th International Conference on Data Science and Information Technology*, pages 438–442.
- Polikar, R. (2012). Ensemble learning. In *Ensemble machine learning*, pages 1–34. Springer.
- Pyrkov, T. V., Slipensky, K., Barg, M., Kondrashin, A., Zhurov, B., Zenin, A., Pyatnitskiy, M., Menshikov, L., Markov, S., and Fedichev, P. O. (2018). Extracting biological age from biomedical data via deep learning: too much of a good thing? *Scientific reports*, 8(1):1–11.
- Qasim, Y., Al-Sameai, H., Ali, O., and Hassan, A. (2020). Convolutional neural networks for automatic detection of colon adenocarcinoma based on histopathological images. In *International Conference of Reliable Information and Communication Technology*, pages 19–28. Springer.
- Ramchoun, H., Idrissi, M. A. J., Ghanou, Y., and Ettaouil, M. (2016). Multilayer perceptron: Architecture optimization and training. *IJIMAI*, 4(1):26–30.
- Raschka, S. (2015). *Python machine learning*. Packt publishing ltd.
- Sae-Lim, W., Wettayaprasit, W., and Aiyarak, P. (2019). Convolutional neural networks using mobilenet for skin lesion classification. In *2019 16th international joint conference on computer science and software engineering (JCSSE)*, pages 242–247. IEEE.
- Safaldin, M., Otair, M., and Abualigah, L. (2021). Improved binary gray wolf optimizer and svm for intrusion detection system in wireless sensor networks. *Journal of ambient intelligence and humanized computing*, 12(2):1559–1576.
- Sarwinda, D., Bustamam, A., Paradisa, R. H., Argyadiva, T., and Mangunwardoyo, W. (2020). Analysis of deep feature extraction for colorectal cancer detection. In *2020 4th International Conference on Informatics and Computational Sciences (ICICoS)*, pages 1–5. IEEE.
- Shandilya, S. and Nayak, S. R. (2022). Analysis of lung cancer by using deep neural network. In *Innovation in Electrical Power Engineering, Communication, and Computing Technology*, pages 427–436. Springer.

- Shen, L., Chen, H., Yu, Z., Kang, W., Zhang, B., Li, H., Yang, B., and Liu, D. (2016). Evolving support vector machines using fruit fly optimization for medical data classification. *Knowledge-Based Systems*, 96:61–75.
- Sifre, L. and Mallat, S. Rigid-motion scattering for image classification. arxiv 2014. *arXiv preprint arXiv:1403.1687*.
- Sikder, J., Das, U. K., and Chakma, R. J. (2021). Supervised learning-based cancer detection.
- Simonyan, K. and Zisserman, A. (2014). Very deep convolutional networks for large-scale image recognition. *arXiv preprint arXiv:1409.1556*.
- Talukder, M. A., Hasan, K. F., Islam, M. M., Uddin, M. A., Akhter, A., Yousuf, M. A., Alharbi, F., and Moni, M. A. (2022a). A dependable hybrid machine learning model for network intrusion detection. *Journal of Information Security and Applications*.
- Talukder, M. A., Islam, M. M., Uddin, M. A., Akhter, A., Hasan, K. F., and Moni, M. A. (2022b). Machine learning-based lung and colon cancer detection using deep feature extraction and ensemble learning. *Expert Systems with Applications*, page 117695.
- Tasnim, Z., Chakraborty, S., Shamrat, F., Chowdhury, A., Alam Nuha, H., Karim, A., Zahir, S. B., and Billah, M. (2021). Deep learning predictive model for colon cancer patient using cnn-based classification. *Int. J. Adv. Comput. Sci. Appl*, 12.
- Thakur, R. (2021). Transfer learning from scratch using keras. <https://medium.com/@1297rohit/transfer-learning-from-scratch-using-keras-339834b153b9>. Accessed: 2021-12-22.
- Toğaçar, M. (2021). Disease type detection in lung and colon cancer images using the complement approach of inefficient sets. *Computers in Biology and Medicine*, 137:104827.
- Tsai, I., Shen, W.-C., Lee, C.-L., Wang, H.-D., Lin, C.-Y., et al. (2022). Machine learning in prediction of bladder cancer on clinical laboratory data. *Diagnostics*, 12(1):203.
- Urbanos, G., Martín, A., Vázquez, G., Villanueva, M., Villa, M., Jimenez-Roldan, L., Chavarrías, M., Lagares, A., Juárez, E., and Sanz, C. (2021). Supervised machine learning methods and hyperspectral imaging techniques jointly applied for brain cancer classification. *Sensors*, 21(11):3827.
- Vergara, I. A., Norambuena, T., Ferrada, E., Slater, A. W., and Melo, F. (2008). Star: a simple tool for the statistical comparison of roc curves. *BMC bioinformatics*, 9(1):1–5.
- Vineis, P. and Wild, C. P. (2014). Global cancer patterns: causes and prevention. *The Lancet*, 383(9916):549–557.
- Willmott, C. J. and Matsuura, K. (2005). Advantages of the mean absolute error (mae) over the root mean square error (rmse) in assessing average model performance. *Climate research*, 30(1):79–82.
- Wu, Q. and Zhao, W. (2017). Small-cell lung cancer detection using a supervised machine learning algorithm. In *2017 international symposium on computer science and intelligent controls (ISCSIC)*, pages 88–91. IEEE.

- Xue, J., Pu, Y., Smith, J., Gao, X., Wang, C., and Wu, B. (2021). Identifying metastatic ability of prostate cancer cell lines using native fluorescence spectroscopy and machine learning methods. *Scientific Reports*, 11(1):1–10.
- Yang, H., Ni, J., Gao, J., Han, Z., and Luan, T. (2021). A novel method for peanut variety identification and classification by improved vgg16. *Scientific Reports*, 11(1):1–17.
- Yang, X., Dindoruk, B., and Lu, L. (2020). A comparative analysis of bubble point pressure prediction using advanced machine learning algorithms and classical correlations. *Journal of Petroleum Science and Engineering*, 185:106598.
- Yang, X., Peng, B., Chen, R., Zhang, Q., Zhu, D., Zhang, Q. J., Xue, F., and Qi, L. (2014). Statistical profiling methods with hierarchical logistic regression for healthcare providers with binary outcomes. *Journal of Applied Statistics*, 41(1):46–59.
- Yildirim, M. and Cinar, A. (2022). Classification with respect to colon adenocarcinoma and colon benign tissue of colon histopathological images with a new cnn model: Ma_colonnet. *International Journal of Imaging Systems and Technology*, 32(1):155–162.
- Yulianto, A., Sukarno, P., and Suwastika, N. A. (2019). Improving adaboost-based intrusion detection system (ids) performance on cic ids 2017 dataset. In *Journal of Physics: Conference Series*, volume 1192, page 012018. IOP Publishing.
- Zhou, Z. (2016). Machine learning (in chinese). *China Merchants*, 3(3):30–35.
- Zhu, Q., Su, S., Tang, T., Liu, W., Zhang, Z., and Tian, Q. (2022). An eco-driving algorithm for trains through distributing energy: A q-learning approach. *ISA transactions*, 122:24–37.