

Mechanism and Machine Theory

Design and Kinematic Analysis of a Two-Sided Asymmetric Scotch Yoke Mechanism with Variable Stroke Length

--Manuscript Draft--

| | |
|------------------------------|---|
| Manuscript Number: | MECHMT-D-24-02426 |
| Article Type: | Research Paper |
| Keywords: | Asymmetric Scotch Yoke Mechanism, Variable Stroke Lengths, Kinematic Analysis |
| Corresponding Author: | KUMARAN THANIKASALAM, BE Anna University Chennai, Tamil Nadu INDIA |
| First Author: | KUMARAN THANIKASALAM, BE |
| Order of Authors: | KUMARAN THANIKASALAM, BE |
| Abstract: | <p>The Scotch yoke mechanism is a device used to change rotary motion into linear motion, usually with equal strokes on each side. This study introduces a modified Scotch yoke mechanism that produces different stroke lengths on each side, making it useful for applications needing varied displacements. The design and motion analysis were completed using SolidWorks to confirm the performance of this asymmetrical stroke. A kinematic study shows how changes in the rotor and yoke design lead to controlled, distinct stroke lengths. This work demonstrates that the adapted Scotch yoke can expand its use in systems requiring precise motion control with varied linear displacement, adding flexibility to its traditional design.</p> |
| Opposed Reviewers: | |

Cover Letter

Kumaran T
Final Year Student
Department of Mechanical Engineering
College of Engineering Guindy, Anna University
Chennai, Tamil Nadu, 600025, India
kumaranas09@gmail.com
Contact: +91-7305310328
November 6, 2024

Editor-in-Chief
Mechanism and Machine Theory

Dear Editor,

I am submitting my manuscript titled "Design and Kinematic Analysis of an Asymmetric Scotch Yoke Mechanism with Variable Stroke Lengths" for possible publication in your esteemed journal. This study introduces a novel approach to adapting the traditional Scotch yoke mechanism by incorporating asymmetric stroke lengths through varied offsets in the sliderways. The modified design enables distinct stroke lengths on either side of the mechanism, making it especially useful in applications such as Atkinson cycle engines, where different expansion and compression ratios are required for improved efficiency.

In this work, I conducted a detailed kinematic analysis using SolidWorks to simulate and validate the mechanism's unique motion characteristics. The results demonstrate the potential of this asymmetric Scotch yoke configuration to enhance the functionality of traditional mechanisms, expanding its applicability to engineering contexts that require customized reciprocating motion.

I believe that these findings offer significant insights into the field of mechanical design, particularly for researchers and professionals involved in the development of innovative mechanisms and motion control systems. I confirm that this manuscript is original, has not been published previously, and is not under consideration for publication elsewhere.

Thank you for considering this submission. I look forward to your feedback.

Sincerely,
Kumaran T
Final Year Student
College of Engineering Guindy, Anna University

Design and Kinematic Analysis of a Two-Sided Asymmetric Scotch Yoke Mechanism with Variable Stroke Length

Highlights

- **Novel asymmetric design:** Introduces a Scotch yoke mechanism with different stroke lengths on each side, achieved by varying the sliderway offsets.
- **Enhanced application potential:** Suited for systems requiring varied displacement, such as Atkinson cycle engines and automated machinery.
- **Kinematic validation:** The design was analyzed and validated through motion simulation in SolidWorks, confirming its unique motion characteristics.
- **Expands Scotch yoke functionality:** Demonstrates the adaptability of the traditional Scotch yoke mechanism for advanced engineering applications.

Design and Kinematic Analysis of a Two-Sided Asymmetric Scotch Yoke Mechanism with Variable Stroke Length

Kumaran T^{a,1,*}

^aDepartment Of Mechanical Engineering, College Of Engineering Guindy, Anna University, Sardar Patel Road, Chennai, 600025, Tamil Nadu, India.

Abstract

The Scotch yoke mechanism is a device used to change rotary motion into linear motion, usually with equal strokes on each side. This study introduces a modified Scotch yoke mechanism that produces different stroke lengths on each side, making it useful for applications needing varied displacements. The design and motion analysis were completed using SolidWorks to confirm the performance of this asymmetrical stroke. A kinematic study shows how changes in the rotor and yoke design lead to controlled, distinct stroke lengths. This work demonstrates that the adapted Scotch yoke can expand its use in systems requiring precise motion control with varied linear displacement, adding flexibility to its traditional design.

Keywords: Asymmetric Scotch Yoke Mechanism, Variable Stroke Lengths, Kinematic Analysis

JEL: O31

1. Introduction

The Scotch yoke mechanism, known for converting rotary motion into linear motion, traditionally delivers equal strokes on each side of its reciprocating path. This design is useful for many industrial applications requiring consistent, linear movement. However, there is a growing need for modified mechanisms that allow controlled, varied strokes to meet specific operational demands, especially in systems where different compression and expansion phases are advantageous. A notable application is in the Atkinson cycle engine, which benefits from an extended expansion stroke relative to the compression stroke, thus improving fuel efficiency.

This study presents a customized Scotch yoke mechanism with an innovative feature: asymmetric stroke lengths achieved by varying the offset in the sliderways on either side of the rotor. This design adaptation enables precise control of the reciprocating motion, tailoring the stroke length to meet requirements like those of the Atkinson cycle engine, which relies on differentiated compression and expansion ratios for enhanced performance. Using SolidWorks, we conducted both design modelling and kinematic analysis to verify the behavior and practicality of this asymmetrical configuration.

By adapting the Scotch yoke's traditional design for asymmetric motion, this research expands its applications, particularly in areas requiring controlled displacement variations. The modified mechanism holds promise for energy-efficient systems and opens up possibilities for novel uses in automotive and industrial processes where adjustable stroke lengths contribute to optimized operation.

*Corresponding author

Email addresses: kumarantias09@gmail.com (KUMARAN T)

2. Design and Components

The modified Scotch yoke mechanism presented in this study features a distinct configuration that enables asymmetric stroke lengths on each side of the rotor. This is achieved by varying the offset distances in the sliderways, allowing for customized displacement on each side. The design considerations and primary components of this asymmetric mechanism are as follows:

Key Components and Their Functions[3]

1. Rotor

The rotor is the main rotating component that drives the linear motion of the slider. In this design, the rotor has been adapted to accommodate different offsets in the sliderways on either side. This allows the mechanism to generate variable stroke lengths, with one side achieving a shorter stroke and the other a longer stroke, as per the required specifications.

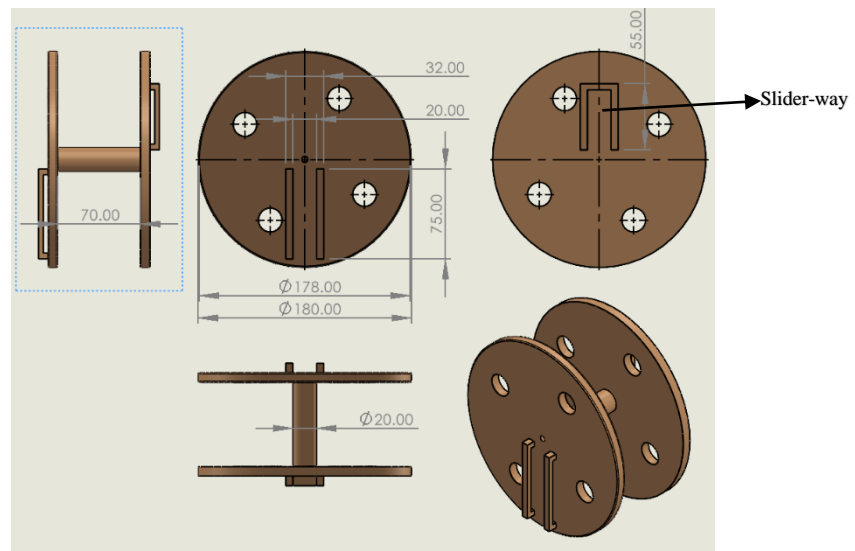


Figure 1: Rotor

2. Slider

The slider translates the rotary motion from the rotor into linear motion along the yoke. The sliderways in the rotor—pathways that guide the slider's motion—are positioned with distinct offsets relative to the centerline of the rotor. By adjusting these offsets, the stroke length on each side of the mechanism varies, enabling asymmetric motion. This configuration is essential to achieving the desired kinematic behavior, especially for applications like the Atkinson cycle engine, where different compression and expansion strokes are advantageous.

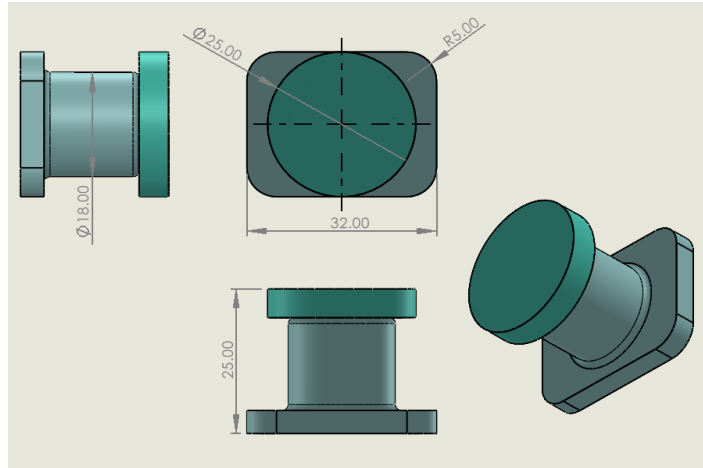


Figure 2: Slider

3. Yoke

The yoke connects to the slider and is responsible for translating the linear motion outward to any linked components or applications. It is designed to withstand the forces exerted by the asymmetric strokes, ensuring smooth and controlled linear movement.

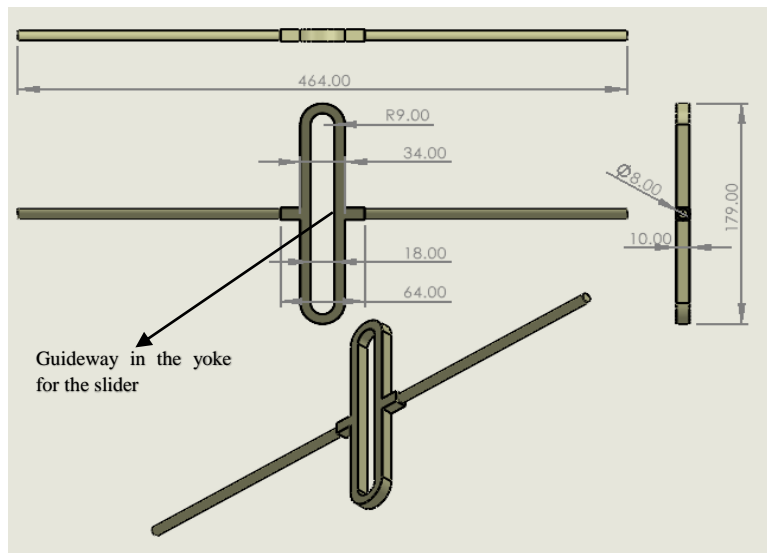


Figure 3: Yoke

4. Base Frame

The base frame provides structural support and alignment for the rotor, slider, and yoke assembly. It maintains the positional integrity of the components, ensuring consistent motion paths and reducing unwanted vibrations or deviations during operation. The frame's design also supports the sliderway offsets, which are critical for the asymmetrical displacement.

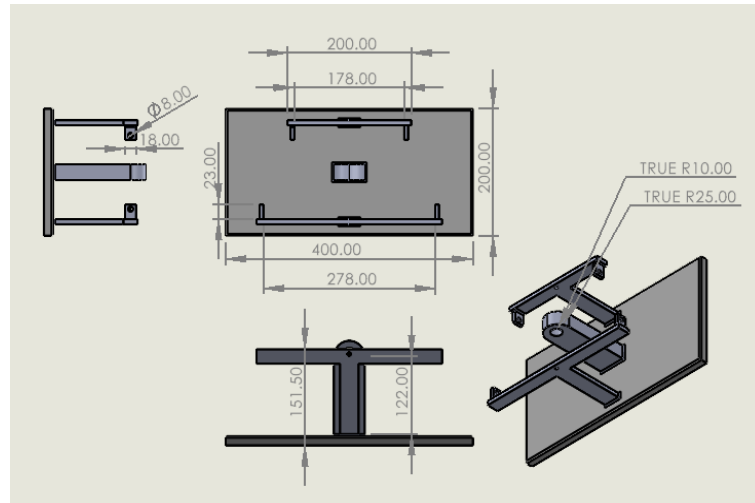


Figure 4: Base Frame

3. Assembly

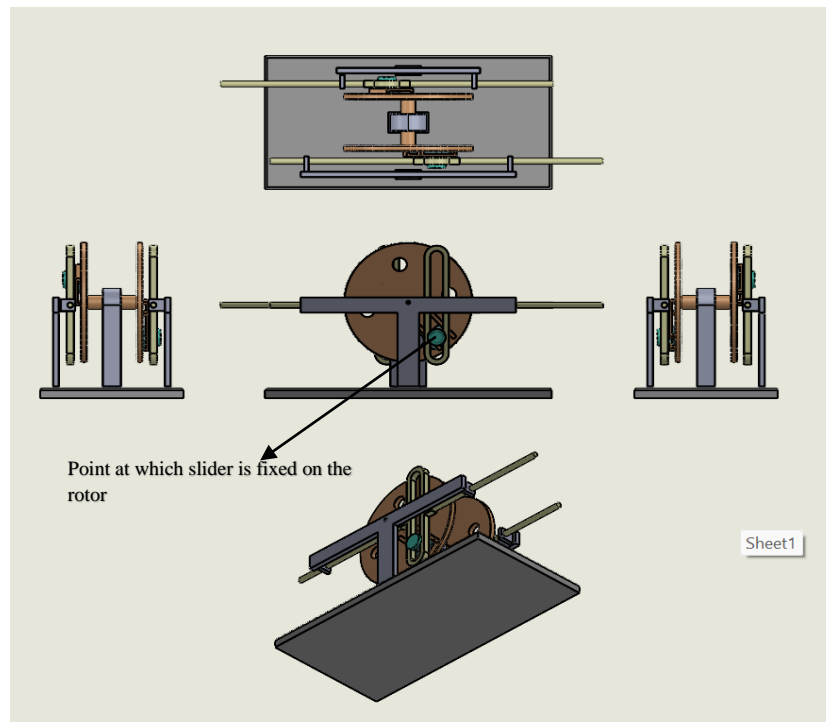


Figure 5: Assembly

4. Working

- (i) The Scotch yoke mechanism is an inversion of the four-bar mechanism.
- (ii) As the rotor rotates, the slider moves along the guideway in the yoke, while its position remains fixed relative to the rotor in the slider-way.
- (iii) The yoke is restricted from rotating and instead moves linearly along slots provided in

the base.

(iv) As shown in the following figure, the point where the slider is attached to the rotor differs on each side, leading to the following characteristics:

In a Scotch yoke mechanism:

- The displacement of the yoke is given by: $x=r \cdot \cos(\omega t)$
- The stroke length is given by: $2r$

Where r is the distance between the center of the slider and the rotor.

From the above, it is clear that the stroke length on each side is unequal due to the offset.

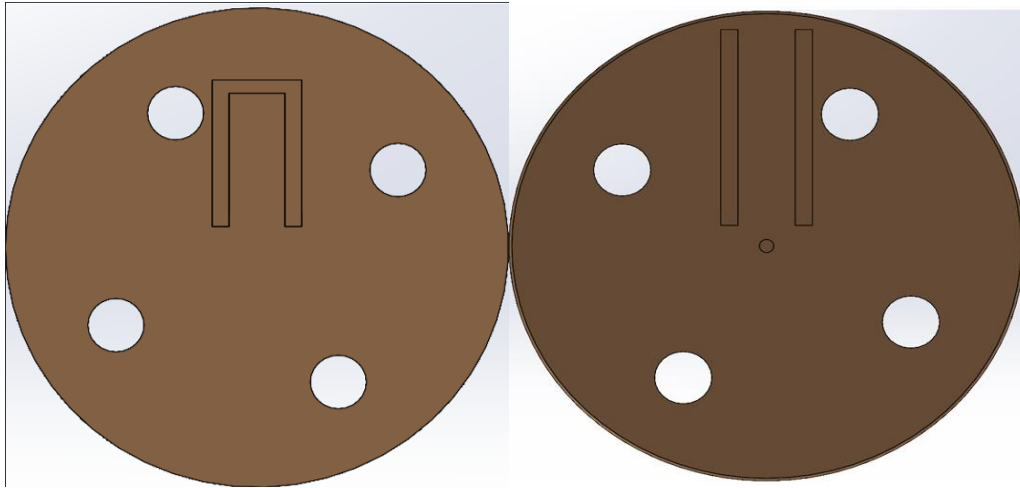


Figure 5: Comparison of length of slider-way on either side of the rotor

5. Motion Analysis setup[4]

Motor speed : 100RPM

Gravity : 9806.65 mm/s²(in downward direction)

Solid body in contact:

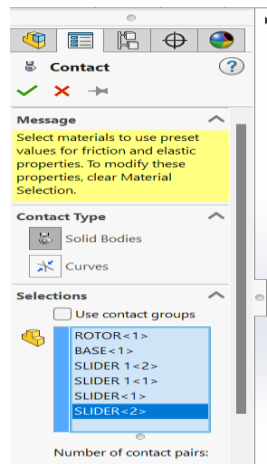


Figure 6: Solid Body Contacts

Plot specifications[4]

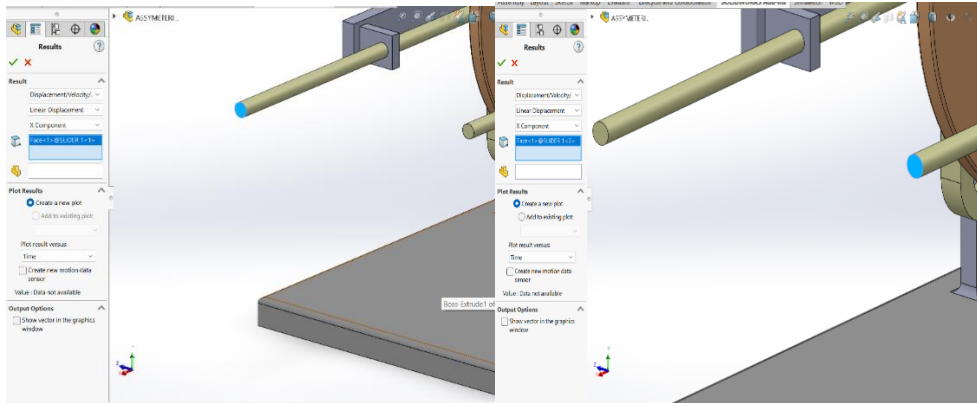


Figure 7: Specifications for Plot 1

Figure 8: Specifications for Plot 2

6. Motion Analysis Result

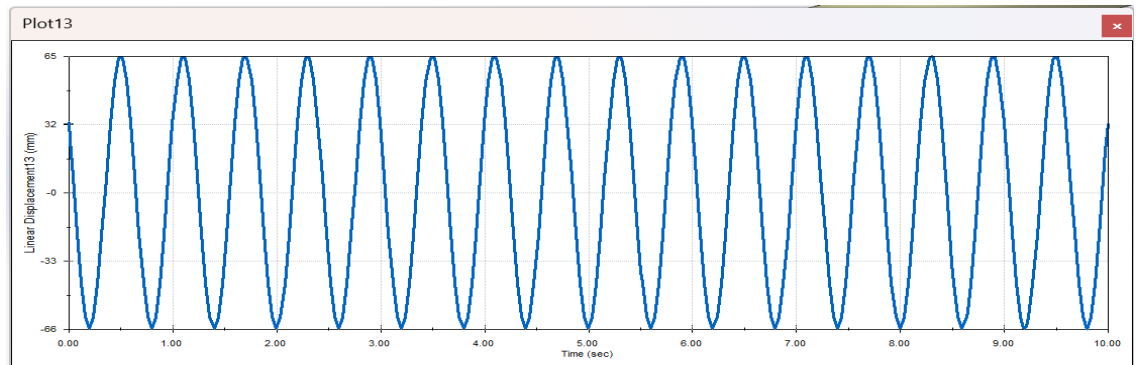


Figure 7: Plot 1 (Linear Displacement Vs Time)

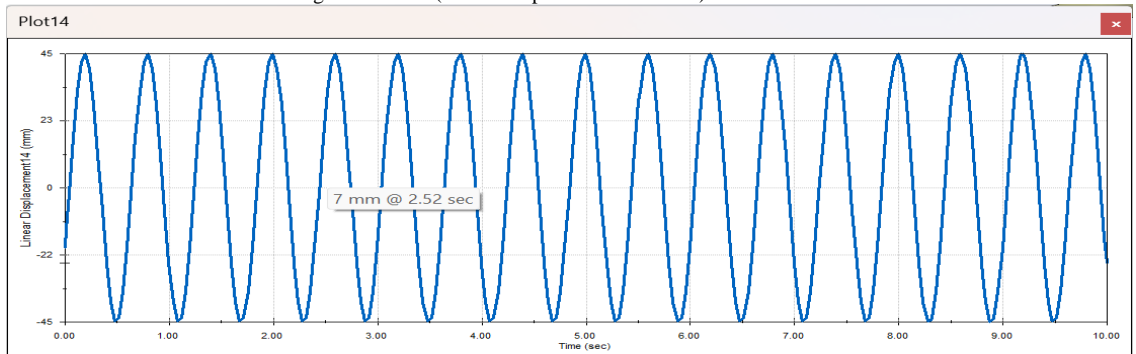


Figure 7: Plot 2 (Linear Displacement Vs Time)

7. Stroke Length

From the above plots it is clear that:

Stroke Length from plot 1: $\max(\text{plot1}) - \min(\text{plot1}) = 65 - (-66) = 131\text{mm}$

Stroke Length from plot 2: $\max(\text{plot2}) - \min(\text{plot2}) = 45 - (-45) = 90\text{mm}$

Difference in stroke length = $131 - 90 = 41\text{mm} \approx 2 * (\text{offset}) = 40\text{mm}$ (since offset = 6)

20mm)

8. Application

(i) Atkinson Cycle Engines

In an Atkinson cycle engine, different compression and expansion strokes improve fuel efficiency. The asymmetric Scotch yoke mechanism can achieve the varied displacement needed for the different phases, making it suitable for optimizing combustion efficiency in automotive and hybrid engines.

(ii) Compressors and Pumps

This mechanism can be used in compressors or pumps that require varying intake and discharge strokes. The ability to customize stroke lengths allows for precise control over compression ratios, enhancing efficiency in fluid transfer systems.

(iii) Automation and Industrial Machinery

In manufacturing, automation processes sometimes require actuators that provide distinct displacements for different stages of a cycle. The asymmetric Scotch yoke mechanism can be tailored to provide the necessary range of motion, making it useful in assembly lines or automated systems requiring varied stroke lengths.

9. Conclusion

This study introduces a modified Scotch yoke mechanism with asymmetric stroke lengths, achieved by varying the offset distances in the sliderways on either side of the rotor. The kinematic analysis performed using SolidWorks demonstrates that this design effectively produces distinct stroke lengths on each side, offering potential advantages for applications requiring variable displacement, such as Atkinson cycle engines and certain automation systems.

Through detailed motion analysis, we have validated the mechanism's capability to achieve controlled, asymmetric motion, expanding its functional possibilities in fields where customized reciprocating motion is needed. This work provides a foundation for further research into similar modifications, with future studies potentially examining structural performance or practical testing in targeted applications.

10. References

- [1] V. Arakelian, J.-P. Le Baron, and M. Mkrtyan, "Design of Scotch yoke mechanisms with improved driving dynamics," *Proceedings of the Institution of Mechanical Engineers, Part C: Journal of Mechanical Engineering Science*, vol. 230, no. 4, pp. 670-679, 2016.
- [2] R. Saravanakumar, N. M. Govindarajan, C. Vattikuti, S. Sampathkumar, and S. Rajendrakumar, "Fabrication and usage of multipurpose mechanical machine using Scotch yoke mechanism," in *IOP Conference Series: Materials Science and Engineering*, vol. 402, 2nd International Conference on Advances in Mechanical Engineering (ICAME 2018), Kattankulathur, India, Mar. 2018, p. 012188.
- [3] R. S. Khurmi and J. K. Gupta, *Theory of Machines*. New Delhi: S. Chand and Company Ltd., 1976. (Reprinted in 2022)
- [4] K.-H. Chang, *Motion Simulation and Mechanism Design with SOLIDWORKS Motion 2024*

Competing Interest Statement

The author declares that there are no competing interests related to this research. The author has no financial, personal, or professional affiliations that could be perceived to influence the work presented in this manuscript. Declaration of generative AI and AI-assisted technologies in the writing process

Declaration of interests

The authors declare that they have no known competing financial interests or personal relationships that could have appeared to influence the work reported in this paper.

The authors declare the following financial interests/personal relationships which may be considered as potential competing interests:

KUMARAN T reports administrative support was provided by Anna University. If there are other authors, they declare that they have no known competing financial interests or personal relationships that could have appeared to influence the work reported in this paper.