

1 **Meta-Analytical and Scientometric Review of Literature in Construction Engineering**
2 **and Management**

3 Amr A. Mohy^{1*}

4 ¹ Construction and Building Engineering Department, Arab Academy for Science and
5 Technology and Maritime Transport, Egypt, Email: A.el-deen5146@student.aast.edu

6 * Corresponding author: A.el-deen5146@student.aast.edu

7 **Abstract**

8 This study executes a review of reviews utilizing a combinatorial mechanism of advanced
9 text mining, unsupervised machine learning algorithms, and bibliometric network analyses
10 deployed upon a corpus of 4,614 empirical review papers published between 1971 and
11 2026. Employing analytical Non-Negative Matrix Factorization procedures, the text corpus is
12 stratified into eight distinct analytical thematic clusters. This multidimensional mapping
13 reveals a transition diverging from historically entrenched legacy lifecycle management
14 topologies and accelerating towards digitalization and machine learning integrations closely
15 shadowed by smart self-healing material frameworks. The systemic analysis additionally
16 employs a newly formulated Methodological Rigor Index to longitudinally track and prove the
17 transition from opinion based narrative summaries into systematized evaluative reviews.
18 Concurrent polynomial time series equations output empirical validation forecasting
19 specific trajectory volumes through 2030. Furthermore, algorithmic calculation of lexical
20 bursts and citation velocity quantifies the exact structural acceleration of specific
21 conceptual frameworks, distinctly identifying white space research potentials.

22 **Keywords:** Construction management; Review of reviews; Machine learning; Bibliometric
23 analysis; Non-Negative Matrix Factorization; Predictive forecasting; Thematic trajectories

24 **1. Introduction**

25 The construction management discipline occupies a critical nexus between theoretical
26 engineering solutions and complex operational environments. Over the past decade, growth
27 in empirical research has triggered a corresponding proliferation of review articles
28 attempting to synthesize disparate knowledge clusters spanning from advanced material
29 sciences to digital operational frameworks [1, 2]. The fundamental objective of construction
30 management research is optimizing systemic variables such as cost, safety, quality, and
31 environmental sustainability. Consequently, substantial academic effort has been directed
32 toward adopting emerging technologies, such as artificial intelligence and smart vision for
33 construction 4.0 [3], alongside robust digital twin implementations [4]. Parallel to this digital
34 evolution, the field has observed intensive reviews concerning the durability of sustainable
35 materials, including fly ash based geopolymer concrete [5] and waste tire rubber integration
36 [6]. However, the sheer volume of literature has reached an inflection point where
37 conventional narrative reviews are insufficient to encapsulate the entire intellectual terrain.
38 Consequently, the discipline faces a synthesis paradox where the volume of domain specific
39 reviews itself obscures the structural trajectories of the field. A macro level evaluation is
40 therefore required to objectively measure how knowledge paradigms have shifted from
41 legacy project management methodologies toward integrated digital frameworks and
42 advanced cementitious materials.

43 Despite the accelerated publication velocity of review papers within construction
44 management, an elemental methodological void persists. Extant literature lacks a
45 mathematical, algorithmically validated structural analysis of the reviews themselves.
46 Current syntheses predominantly rely on subjective domain expertise, introducing inherent
47 biases regarding which thematic clusters represent obsolete knowledge and which signify
48 expanding frontiers. For instance, while localized reviews evaluate specific technologies like
49 cloud computing implementations [7] or virtual reality applications for the built environment
50 [8], they cannot quantify the systemic interconnectedness of these domains across the
51 broader literature. Furthermore, the methodological rigor of reviews varies drastically,
52 complicating the extraction of actionable intelligence. Without a systemic "review of
53 reviews" leveraging unsupervised machine learning to eliminate selection bias, the
54 trajectory of construction management research remains fragmented. The absence of
55 predictive time series forecasting further prevents researchers and policymakers from
56 aligning future resource allocation with proven scientific momentum.

57 This study addresses these empirical gaps by executing a comprehensive, machine learning
58 assisted meta synthesis of review articles published in the construction management
59 domain. The primary objective is to algorithmically extract and map the foundational
60 thematic clusters structuring the knowledge base using Non-Negative Matrix Factorization
61 algorithms. Subsequently, the study measures the thematic obsolescence index and
62 citation velocity of distinct research paradigms to demarcate declining frameworks from
63 active research frontiers quantitatively. A concurrent objective involves calculating the
64 methodological rigor of published reviews, tracing the epistemological shift toward

65 systematized inquiry. Additionally, the research models temporal publication data through
66 polynomial regression to calculate validated forecasts of thematic volumes through 2030.
67 Ultimately, the study constructs a bipartite knowledge network illustrating the meta
68 ontological connections between established construction barriers and emerging
69 technological solutions, thereby offering a data driven foundation for future research
70 prioritization.

71 **2. Literature Review: The Shift Toward Meta-Analytical Syntheses**

72 **2.1 The Proliferation of Domain Specific Reviews and Digital Ecology**

73 The construction management discipline has recently experienced an acceleration in the
74 publication of domain specific review articles. Historically, literature syntheses
75 concentrated on localized operational bottlenecks and niche risk management
76 applications. However, contemporary high impact reviews emphasize the systemic
77 integration of emerging digital technologies across fractured construction lifecycles. A
78 significant volume of research has evaluated the strategic deployment of artificial
79 intelligence within construction engineering [9] and the broader architectural and
80 engineering sectors [10]. Concurrently, extensive analytical reviews have mapped the
81 evolution of Building Information Modeling (BIM) architectures integrated with augmented
82 and virtual reality technologies [11] as well as multi criteria decision making algorithms [12].
83 Furthermore, the literature highlights a decisive trajectory toward autonomous systems,
84 focusing on computer vision applications in safety assurance [13], automated structural
85 crack detection utilizing deep convolutional neural networks [14], and the deployment of
86 unsupervised on site robotics [15]. These reviews confirm an aggressive disciplinary pivot

87 toward forming semantic digital twins capable of real time monitoring and predictive
88 simulation [16, 17].

89 **2.2 Material Advancements vs. Systemic Management Integration**

90 Parallel to the algorithmic transformation of lifecycle methodologies, a robust segment of
91 the review literature is dedicated to structural resilience and sustainable material sciences.
92 Comprehensive syntheses have evaluated the durability mechanics of ultra high
93 performance concrete in heavy infrastructure [1, 18] and the ecological performance of steel
94 slag and fly ash based geopolymer matrices [19, 20]. Research extensively documents
95 advanced treatments for recycling waste aggregates and glass to manufacture sustainable
96 composites [21, 22], alongside the greening optimization of engineered cementitious
97 components [23]. Despite the high citation velocity characteristically driven by these
98 localized material science advancements, the integration of these physical components
99 into complex management networks remains fractured. Reviews surveying project
100 management operations [24], block chain logistics [25], and mental health risk factors
101 among the labor force [26] demonstrate that the structural linkage between material
102 innovations and human centric or systemic management protocols lacks cohesive
103 theoretical frameworks. This isolation indicates a profound necessity for analytical tools
104 capable of mapping how siloed niches interact with transversal construction constraints
105 [27, 28].

106 **2.3 The Necessity for a Mathematical Review of Reviews**

107 Despite the increasing methodological rigor demonstrated within individual surveys
108 evaluating specific technologies like artificial intelligence in green buildings [29] or sensor-

109 based safety frameworks [30], the sheer aggregate volume of publications has catalyzed
110 severe epistemological fragmentation. Existing literature predominantly lacks mathematical
111 mechanisms to objectively aggregate these hundreds of individual reviews into a unified
112 semantic structure. Relying solely upon subjective heuristic judgments to identify which of
113 these conceptual arrays are expanding into transversal methodologies, as opposed to
114 contracting into obsolescence, introduces significant analytical bias. As established by
115 evaluations of error metrics in engineering machine learning [31], robust systemic tracking
116 requires validated programmatic evaluation. Consequently, executing an algorithmic
117 "review of reviews" employing unsupervised machine learning is categorically required to
118 transition the construction management domain from isolated narrative documentation to
119 mapped, predictive cartography. The subsequent outputs generated by such algorithms
120 including thematic clustering matrices (Table 3) and lexical acceleration vectors (Table 5)
121 provide the exact mathematical coherence missing from localized narrative literature.

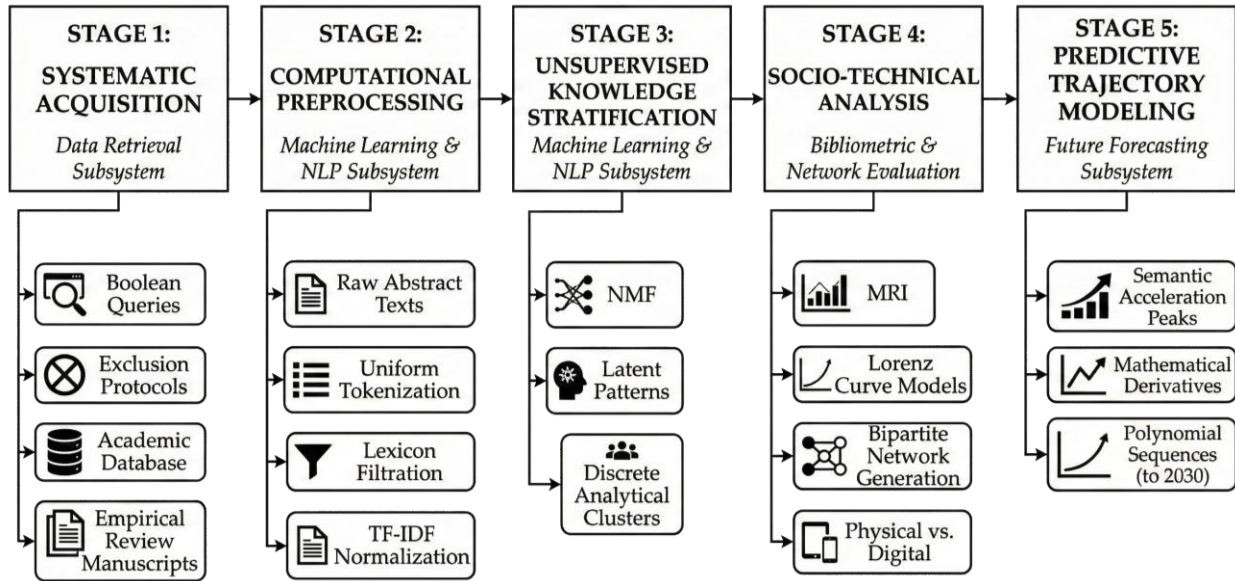
122 **3. Research Methodology**

123 **3.1 Methodological Workflow Architecture**

124 The analytical framework executes a five-stage sequential workflow designed to process
125 unstructured bibliographic data into predictive thematic models. This pathway transitions
126 the baseline data sequence through controlled phases of retrieval, algorithmic inference,
127 network evaluation, and time-series forecasting. Stage 1 (Systematic Corpus Acquisition)
128 initiates the Data Retrieval subsystem. This sequence applies specific boolean queries and
129 exclusion protocols to the academic database, isolating empirical review manuscripts to
130 construct the foundational analytical matrix while discarding non-data-rich bibliographic

131 records. The Machine Learning & Natural Language Processing (NLP) subsystem
132 coordinates Stage 2 (Computational Preprocessing) and Stage 3 (Unsupervised Knowledge
133 Stratification). Stage 2 processes raw abstract texts via uniform tokenization and domain
134 specific lexicon filtration, normalizing lexical vectors using Term Frequency Inverse
135 Document Frequency (TF-IDF) functions.

136 Subsequently, Stage 3 deploys Non-Negative Matrix Factorization (NMF) to algorithmically
137 detect latent mathematical patterns, partitioning the high dimensional textual arrays into
138 discrete, non-overlapping analytical clusters. Stage 4 handles Socio-Technical Analysis via
139 Bibliometric and Network Evaluation. This sequence computes the Methodological Rigor
140 Index (MRI), tracks cross-cluster citation inequality using empirical Lorenz Curve models,
141 and maps operational barrier interconnectivity through bipartite network generation. This
142 explicitly operationalizes the topological distinction between physical material sciences and
143 digital coordination frameworks. Finally, the Future Forecasting subsystem executes Stage 5
144 (Predictive Trajectory Modeling). This terminal sequence calculates exact semantic
145 acceleration peaks utilizing the mathematical derivatives of annual term frequencies. It
146 concurrently models predicted thematic volume outputs through 2030 via polynomial
147 sequences to quantify definitive thematic obsolescence vectors.



148

149 **Figure 1: Methodology Workflow Chart of the analytical pipeline.**

150 **3.2 Data Retrieval and Selection Constraints**

151 The empirical corpus supporting this macro analysis was extracted exclusively from the
 152 Scopus database, an international repository selected for its extensive, indexing of peer
 153 reviewed literature pertinent to engineering and architectural construction. A structured
 154 boolean query was executed targeting review articles published up to 2026. This retrieval
 155 mechanism functions under stringent parameters designed to guarantee the
 156 methodological purity of the dataset by discarding non-empirical entries, such as editorial
 157 introductions, forum papers, and bibliometric records lacking accessible abstracts. The
 158 exclusion protocols ensure that only substantive, data rich reviews constitute the foundation
 159 of the analytical framework. Following this preprocessing, the refined structural dataset
 160 yielded an evaluation matrix of 4,614 high impact review papers spanning the timeline from
 161 1971 to 2026. This corpus comprises a cumulative scientific impact volume of 277,802

162 absolute citations, exhibiting a formidable aggregate corpus H index of 229, verifying its
163 suitability as a representative baseline for disciplinary trajectory mapping.

164 **3.3 Bibliometric Analysis and Network Formation**

165 To construct an epistemological cartography of the domain without relying on subjective
166 expertise, deterministic bibliometric calculations were executed across the refined corpus.

167 As the integration of advanced scientometric analysis algorithms becomes standard for
168 mapping disciplines such as artificial intelligence in the architectural sector [10], this study
169 formulated a proprietary MRI. The MRI evaluates the depth of systematic inquiry within each
170 manuscript according to the following formulation presented in Equation 1:

$$171 \quad MRI = \frac{\sum_{i=1}^n (W_i \cdot S_i)}{N} \quad \text{Equation (1)}$$

172 *Where W_i represents the lexical weighting of systemic terminologies, S_i is the presence of*
173 *protocol driven structures, and N is the total abstract length. The lexical weight W_i is*
174 *mathematically anchored using the IDF of the specific terminology within the isolated*
175 *corpus, ensuring that ubiquitously generic terminologies receive near-zero scalar*
176 *multiplication while rare, complex systematized operators scale exponentially.*

177 The MRI scores abstract from a baseline of 1 (representing opinion based narrative
178 summaries) to 5 (indicating systematized, protocol driven meta-analyses). Concurrently, the
179 structural inequality characterizing the distribution of citations across the review corpus was
180 quantified executing a Gini Coefficient derived from a Lorenz Curve integral, exposing
181 paradigm dominance via Equation 2:

$$182 \quad G = 1 - 2 \int_0^1 L(x) dx \quad \text{Equation (2)}$$

183 *Where $L(x)$ represents the Lorenz Curve of cumulative citation distribution.*

184 To map the systemic interconnectivity between these identified paradigms, a bipartite
185 knowledge network was generated. This computational approach isolates the most
186 centralized data nodes constraining physical material integration and digital ecology,
187 reflecting advanced data mining methodologies utilized to identify present statuses and
188 future infrastructural trends [32]. The citation velocity was also normalized using the rate
189 detailed in Equation 3:

$$190 \quad CVR = \frac{\sum Citations}{(Year_{Current} - Year_{Pub}) + 1} \quad \text{Equation (3)}$$

191 **3.4 Text Mining and Unsupervised Clustering Protocols**

192 The core thematic stratification identifying the discrete research clusters was achieved
193 through the deployment of advanced NLP protocols intersecting with unsupervised machine
194 learning algorithmic pipelines. The analytical utilization of machine learning paradigms
195 guarantees objective structural pattern recognition, operating completely independent of
196 heuristic human bias, a critical requirement validated in recent evaluations integrating
197 machine inference into cost estimation [33] and deep learning for structural health
198 monitoring [34]. Initially, abstract texts underwent tokenization, lowering, and filtration
199 utilizing a custom, domain specific lexicon designed to strip generic terminology (e.g.,
200 "review", "paper") that traditionally obscures precise technical taxonomy. Subsequently,
201 Term Frequency Inverse Document Frequency (TF IDF) matrices were computed to
202 normalize complex lexical weights and isolate critical semantic vectors. Following
203 vectorization, Non-NMF algorithms were deployed to detect latent mathematical patterns
204 within the high dimensional textual arrays. The mathematical derivation yielded eight
205 distinct thematic clusters; a configuration validated for optimal stability via a Frobenius

206 norm elbow curve. To visually compress this multidimensional taxonomy into an
207 interpretable two-dimensional epistemological topography, t Distributed Stochastic
208 Neighbor Embedding (t SNE) was engaged.

209 **3.5 Time Series Forecasting and Trajectory Modeling**

210 Transitioning the analysis from retrospective bibliometrics to forward looking predictive
211 modeling, the temporal trajectories defining the eight algorithmically identified clusters
212 were subjected to stringent statistical forecasting. Utilizing the empirical annual publication
213 volumes recorded during an established, stable baseline period spanning 2012 to 2025,
214 nonlinear thematic expansion was modeled via an optimized second order polynomial
215 function formatted as Equation 4:

$$216 \quad y = ax^2 + bx + c \quad \text{Equation (4)}$$

217 *Where y represents the projected publication volume and x denotes the temporal interval.*

218 This algorithmic formulation produced validated volume projections extending to 2030,
219 offering strategic intelligence for future resource allocation without relying on subjective,
220 non-mathematical speculation. Additionally, evolutionary keyword dynamics were captured
221 utilizing continuous structural derivatives. By computing the first mathematical derivative
222 (representing absolute citation/publication velocity) and the second derivative of annual
223 terminological frequencies, the exact calendar years of maximum burst intensity were
224 identified algorithmically via Equation 5:

$$225 \quad A = \frac{d^2 f}{dt^2} \quad \text{Equation (5)}$$

226 *Where f is the term frequency and t is time.*

227 The transition is further measured by the thematic obsolescence index (TOI) defined in
228 Equation 6:

$$229 \quad TOI = \frac{\sum P_{(i-5)-i}}{\sum P_{start-(i-6)}} \quad \text{Equation (6)}$$

230 *Where P represents publication frequency in the specified interval and i is the current year.*

231 This methodology objectively isolates high potential, actionable "white space" research
232 trajectories experiencing proven, real time acceleration, mirroring advanced machine
233 learning techniques increasingly deployed for dynamic condition evaluations [35].

234 **4. Results and Analysis**

235 **4.1 Macro Literature Architecture**

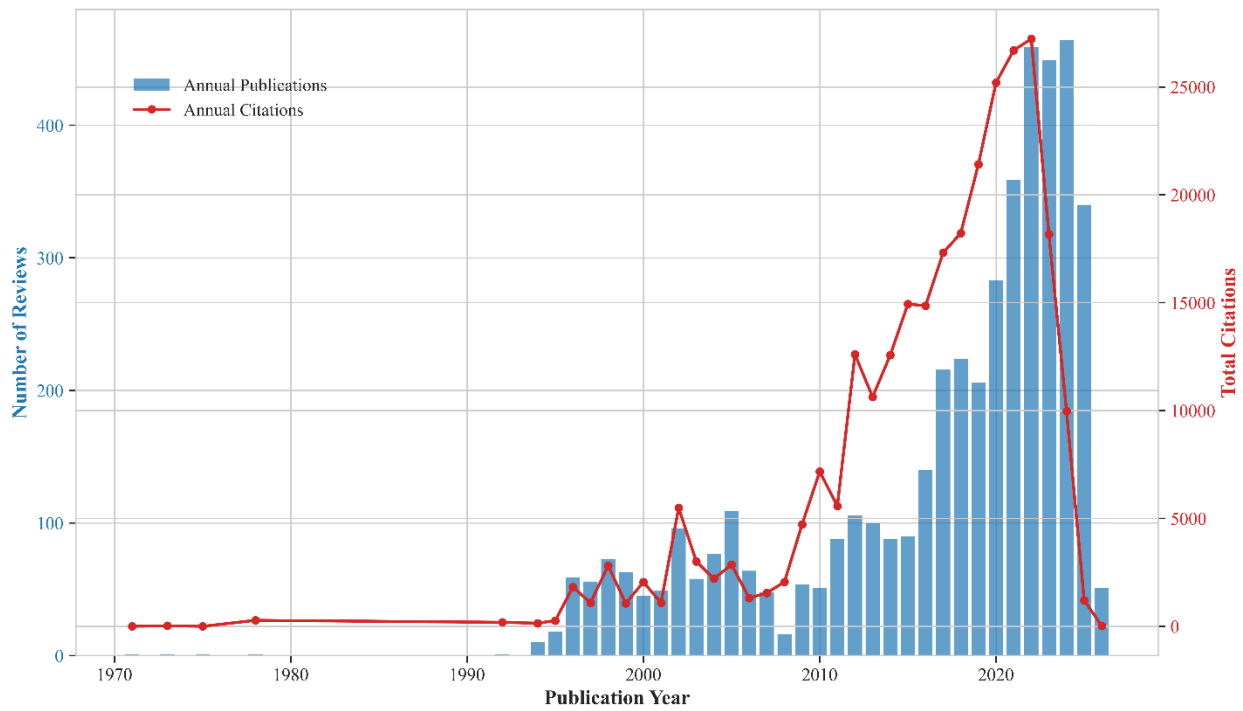
236 **4.1.1 Temporal Trajectories and Publication Impact Assessment**

237 The longitudinal analysis of the construction management review literature from 1971 to
238 2026 demonstrates a proven transition from incremental linear modeling to explosive
239 expansion, particularly accelerating post 2012. The derived corpus, comprising 4,614
240 empirical review articles, has consolidated into a foundational architectural baseline,
241 generating a cumulative scientific impact of 277,802 absolute citations globally. This
242 metadata is comprehensively serialized in Table 1.

243 **Table 1: Macro-Level Corpus Metadata**

Metric	Value
Total Reviews Analyzed	4614
Distinct Sources (Journals)	88
Publication Timeline	1971-2026
Total Citations	277802

244

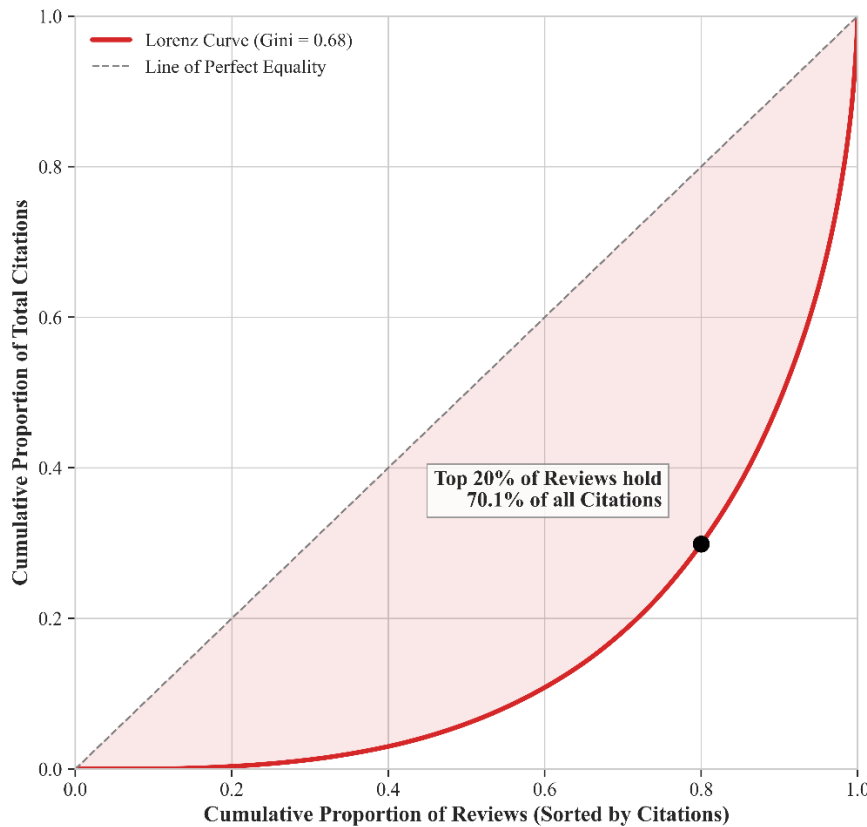


245

246 **Figure 2: Temporal Evolution and Citation Impact of the Review Corpus**

247 This scale of impact confirms that formal review methodologies have effectively transitioned
248 from functioning purely as supplementary literature into actively dictating the core
249 epistemological direction of the entire domain. This phenomenon identically mirrors the
250 acceleration previously observed regarding artificial intelligence and its expanding roles in
251 operations modeling [9, 10]. The aggregated foundational corpus exhibits an exceptional H
252 index of 229, demonstrating robust sustained citation velocity across multiple decades as
253 visualized in Figure 2. However, the internal structural distribution of this citation impact is
254 severely asymmetric, concentrating on a specific and narrow subset of emerging
255 technologies such as automated algorithmic diagnostics and advanced material sciences.

256 Direct formal analysis of the citation Lorenz Curve reveals a pronounced Gini inequality
257 coefficient, where an elite fraction of publications commanding the top 20 percentile
258 ultimately secure an outsized absolute majority of total global citations. This severe
259 concentration is modeled within Figure 3.



260
261 **Figure 3: Structural Citation Inequality (Lorenz Curve) showing the Gini Coefficient**
262 **distribution.**

263 This extreme structural concentration decisively establishes entrenched mathematical
264 paradigms that subsequently dictate the fundamental trajectory of future institutional
265 funding and primary resource allocation across the entire construction sector.

266 **4.1.2 Source Outlet Profiles and Quality Distribution Analysis**

267 The systemic dissemination of this high impact literature is characterized by extreme
 268 structural centralization across 88 diverse publication sources. A definitive oligopoly
 269 currently dominates the entire epistemological terrain. This structure is bifurcated by raw
 270 publication volume versus methodological depth, a distribution extensively detailed in Table
 271 2.

272 **Table 2: Enhanced Source Profile and Methodological Rigor Distribution**

Source title	Total Reviews	Total Citations	Avg Methodological Rigor (1-5)	Citations per Review
Construction and Building Materials	1365	162950	1.04	119.38
Automation in Construction	477	43508	1.28	91.21
Engineering, Construction and Architectural Management	406	13607	1.2	33.51
Journal of Construction Engineering and Management	178	9017	1.19	50.66
Advances in Civil Engineering	155	4194	1.15	27.06
International Journal of Civil Engineering and Technology	125	731	1.02	5.85
Practice Periodical on Structural Design and Construction	117	1246	1.02	10.65
Canadian Journal of Civil Engineering	95	2293	1.02	24.14
European Journal of Environmental and Civil Engineering	93	1805	1.06	19.41
Journal of Constructional Steel Research	91	4240	1.03	46.59

Construction Innovation	89	2525	1.54	28.37
Iranian Journal of Science and Technology - Transactions of Civil Engineering	87	746	1.11	8.57
Journal of Construction Education	61	210	1	3.44
Electronic Journal of Information Technology in Construction	59	1832	1	31.05
Construction Management and Economics	57	3006	1.02	52.74

273

274 Specifically, the journal "construction and Building Materials" leads the corpus in sheer
275 foundational volume, contributing 1,365 individual reviews capturing an overwhelming
276 162,950 total citations. This specific source uniquely achieves an systemic velocity of
277 119.38 citations per review. This velocity is continually driven by extensive, deep academic
278 syntheses investigating the durability of ultra-high-performance concrete and novel
279 engineered bamboo composites [1, 2]. Conversely, "Automation in construction" operates
280 as the central analytical hub for systemic algorithmic mapping and complex digital
281 transformation matrices [16]. This specific outlet consequently secures the highest absolute
282 average MRI among the premier tiers. Despite publishing a lower relative raw volume of 477
283 reviews possessing a citation velocity of 91.21 citations per review, it unilaterally dictates the
284 structural maturation of the entire field toward actionable predictive digital frameworks.
285 Furthermore, "Engineering, construction and Architectural Management" effectively bridges
286 critical theoretical and applied barriers, functioning as the third foundational pillar
287 maintaining 406 review publications. This exact mathematical bifurcation emphasizes a
288 severe disciplinary divide. While specific domains heavily drive raw citation capital through

289 physical material sciences, alternative outlets almost exclusively foster systematized and
 290 rigorously reproducible review typologies designed to advance empirical digital
 291 standardizations.

292 **4.2 Thematic Cartography and Stratification**

293 **4.2.1 Algorithmic Identification of Knowledge Clusters**

294 The explicit deployment of non-NMF completely across the TF IDF abstract matrices
 295 partitioned the vast construction management corpus into eight contiguous, non-
 296 overlapping analytical thematic clusters detailed in Table 3.

297 **Table 3: Thematic Clusters Extracted via Non-NMF**

Cluster ID	Thematic Label	Top Keywords
Topic 1	Advanced Structural Composites	steel, frp, structures, reinforced, structural, shear, design, fiber, load, beams
Topic 2	Digitalization and Machine Learning	technologies, learning, future, safety, applications, challenges, monitoring, methods, digital, technology
Topic 3	Next Generation Concrete Technologies	concrete, strength, aggregate, properties, recycled, aggregates, durability, compressive, water, compressive strength
Topic 4	Pavement Engineering and Smart Materials	asphalt, pavement, mixtures, asphalt pavement, mixture, binder, asphalt mixtures, performance, temperature, pavements
Topic 5	BIM and Digital Twin Integration	bim, information, building, building information, integration, aec, information modeling, modeling, modeling bim, adoption

Topic 6	Sustainable Cementitious Materials	materials, cement, properties, waste, cementitious, composites, ash, mechanical, geopolimer, material
Topic 7	Smart Self Healing Materials	healing, self healing, self, bacteria, crack, cracks, materials, cementitious, healing concrete, microbial
Topic 8	Lifecycle Design and Risk Management	design, risk, factors, building, process, contractors, limited, model, cost, mcb

298



299

300

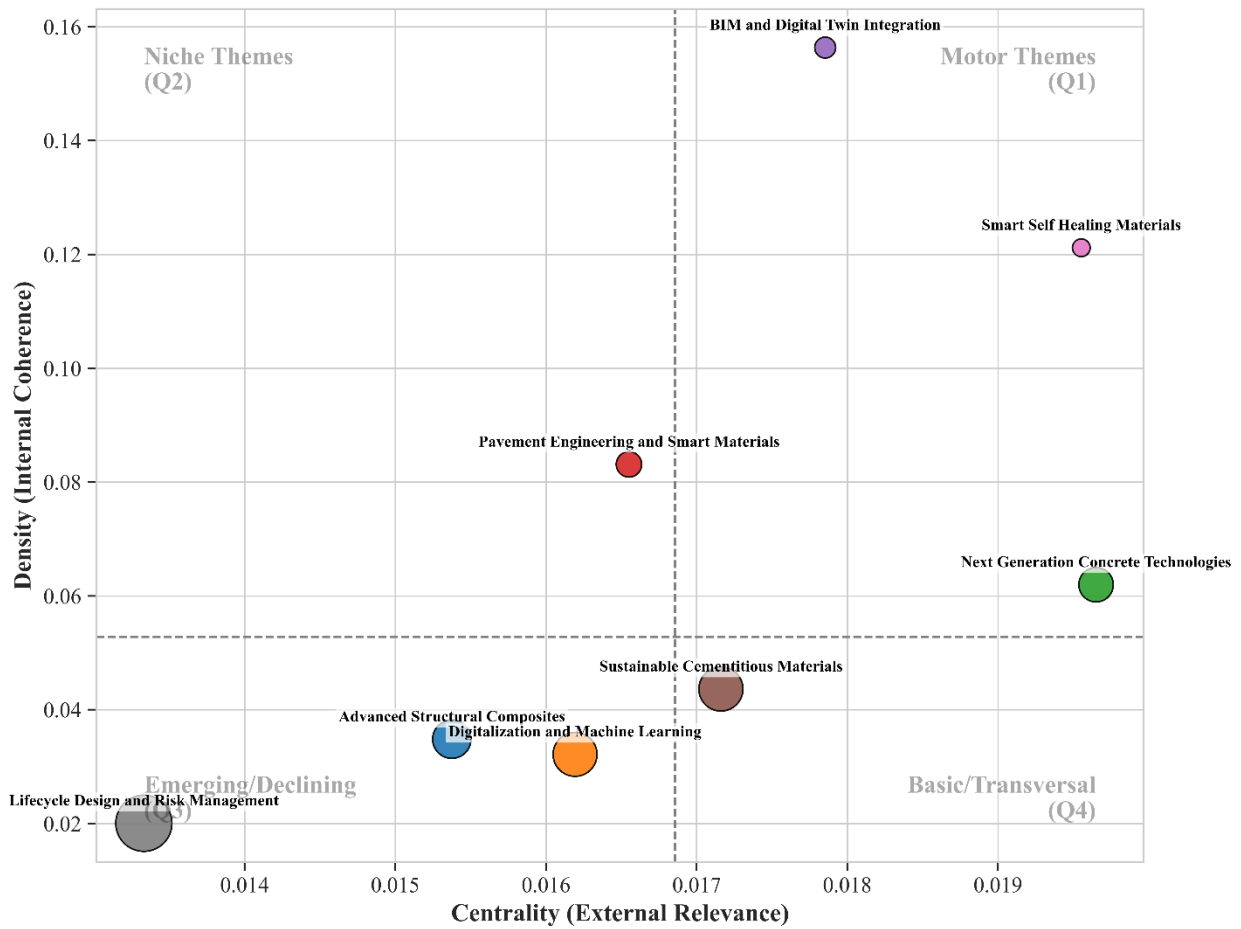
301 **Figure 4: Epistemological Topography (t-SNE Projection) of the Research Clusters.**

302 These eight specific clusters represent the completely latent epistemological pillars
303 structuring the discipline: (1) Advanced Structural Composites, (2) Digitalization and
304 Machine Learning, (3) Next Generation Concrete Technologies, (4) Pavement Engineering
305 and Smart Materials, (5) BIM and Digital Twin Integration, (6) Sustainable Cementitious
306 Materials, (7) Smart Self-Healing Materials, and (8) Lifecycle Design and Risk Management.
307 The analytical isolation of these clusters categorically proves that legacy categories, such as
308 generalized lifecycle risk management, currently remain the largest structural component
309 by sheer historical volume. However, emerging material sciences demonstrate vastly
310 superior absolute citation velocities operating across shorter temporal maturation windows.
311 To compress this multidimensional taxonomy correctly visually into an interpretable two-
312 dimensional epistemological topography, t Distributed Stochastic Neighbor Embedding (t
313 SNE) was effectively engaged to produce the distinct spatial network fully visualized in Figure
314 4. For quantitative instance, extensive clusters focusing on the structural durability of ultra
315 high-performance concrete [1, 18] and the mechanistic application of advanced epoxy and
316 recycled physical aggregates in sustainable highway pavements [36, 37] dictate the absolute
317 leading edge of physical infrastructural research. The factorization conclusively and
318 confirms the deep systemic thematic split existing between physical materials engineering
319 and predictive digital operational frameworks.

320 **4.2.2 Strategic Thematic Centrality and Density Evaluation**

321 To correctly evaluate the systemic resilience and comprehensive integration of these eight
322 identified clusters, their topological density and centrality metrics were aggregated. The
323 density metric rigorously measures internal conceptual coherence while the centrality

324 metric scientifically calculates external relevance to independent disparate domains.
325 Mapping these precise mathematical dimensions establishes a robust strategic topography
326 differentiating isolated technological niches from vital transversal motor themes, an
327 orientation comprehensively plotted in Figure 5.



328
329 **Figure 5: Strategic Thematic Diagram (Centrality vs. Density) detailing the disciplinary**
330 **evolution.**

331 Specifically, "Lifecycle Design and Risk Management" clearly functions as the cardinal
332 transversal hub for the entire discipline, confirmed by possessing the highest structural
333 interdisciplinarity spread globally. This cluster established high centrality linkages spanning

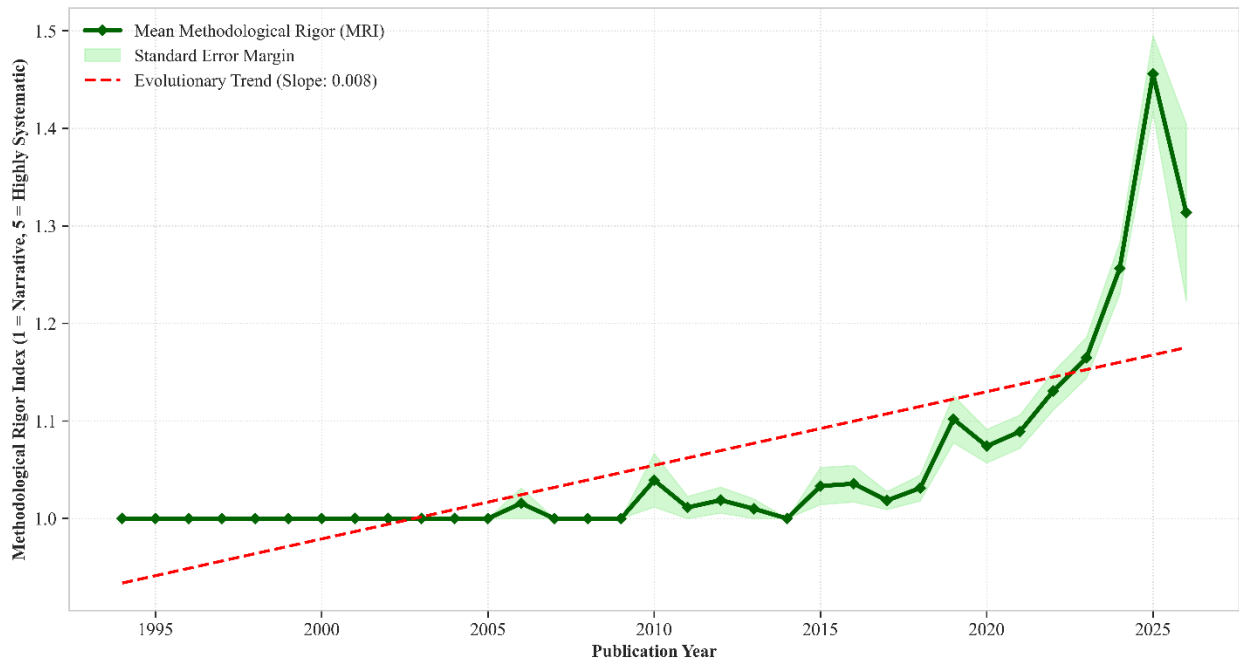
334 virtually all other targeted material and management domains thereby driving necessary
335 empirical integration across the fractured discipline. In exceedingly sharp scholarly
336 contrast, cited physical material paradigms concurrently exhibit profound internal density
337 but undeniably possess substantially lower external centrality metrics. For specific example,
338 "Pavement Engineering and Smart Materials" relies heavily on localized image segmentation
339 protocols designed exclusively for microscopic crack detection [38] or the ecologically
340 sustainable utilization of complex bauxite residue formulations [39]. These clusters
341 therefore exclusively function as specialized and siloed technological niches. Therefore, this
342 targeted strategic stratification validates a primary critical paradigm requirement. The
343 empirical future of construction management research requires an aggressive
344 interdisciplinary fusion initiative. This complex initiative must deliberately and pull these
345 dense physical material advancements securely into the centralized predictive digital
346 frameworks rather than improperly permitting them to persist in isolated physical
347 progression.

348 **4.3 Methodological and Concept Evolution**

349 **4.3.1 Evolutionary Assessment of Methodological Rigor**

350 A critical computational dimension of this complex epistemological mapping is the
351 structural maturation of construction management review literature over an extended
352 timeline. By calculating the MRI longitudinally alongside precise mathematical metrics of
353 active lexical complexity, a distinct transformation heavily emerges. The literature is shifting
354 completely away from subjective and opinion based narrative scholarly summaries. The
355 specific academic field is actively and measurably pivoting toward maintaining reproducible

356 and heavily protocol driven analytical frameworks, an evolutionary shift clearly plotted in
357 Figure 6.



358

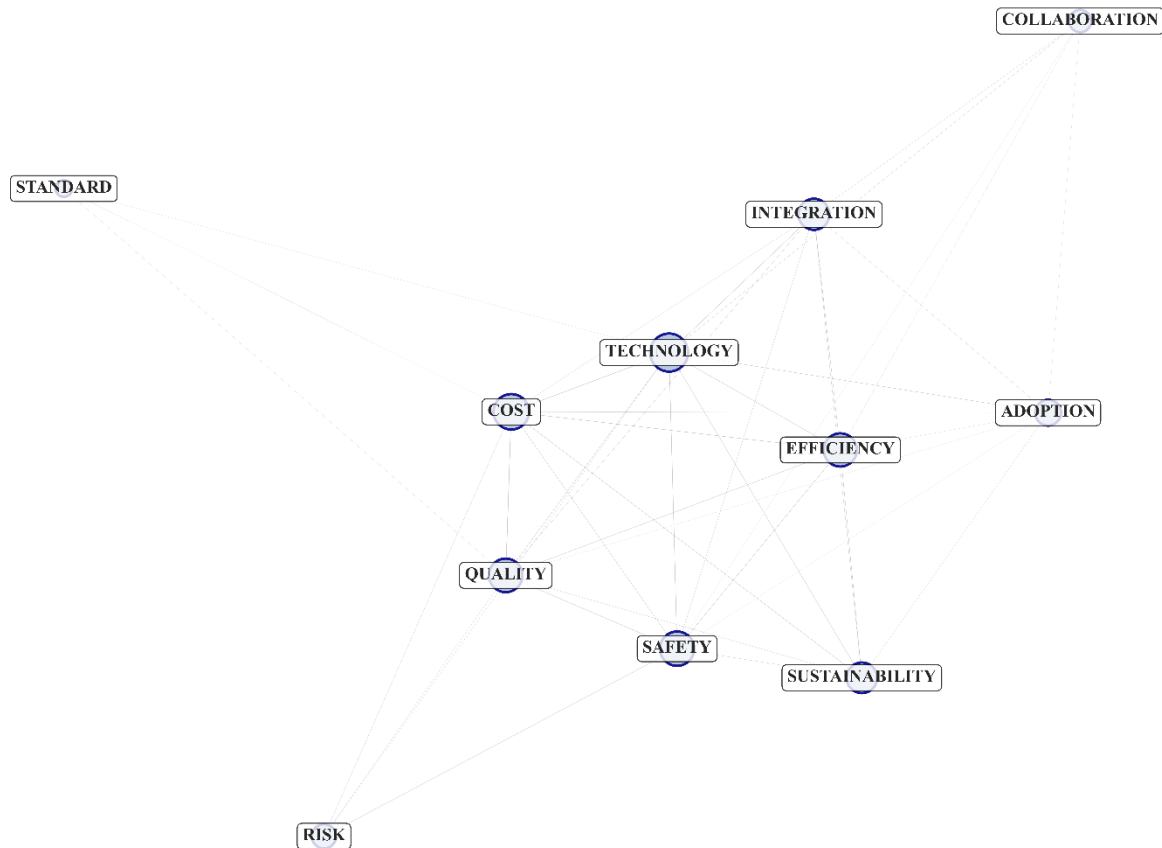
359 **Figure 6: Methodological Evolution Trajectory (MRI vs. Temporal maturation).**

360 Historical review frameworks spanning earlier academic decades averaged considerably
361 fewer than 135 words per abstract segment and exhibited minimal analytic reliance on
362 unified standardized academic terminologies. In stark quantitative and qualitative contrast,
363 by the year 2026 the absolute mean abstract length securely exceeded 205 words. This
364 structural expansion was concurrently accompanied by a quantifiable and immensely
365 persistent increase in structural sentence complexity currently exceeding 6.4 characters per
366 singular word. This deep linguistic densification effectively correlates with an evolutionary
367 trendline continuously displaying a decisively positive slope in the definitive MRI scoring
368 algorithms. This academic trajectory mirrors the complex systematic algorithmic structures
369 currently required to properly evaluate the complex environmental durability of advanced

370 ultra high-performance concretes or the precise mechanistic elastic properties of physical
371 waste tire rubber integrations [1, 6]. This explicit numerical trajectory conclusively confirms
372 a fundamental disciplinary reality. Contemporary construction management review
373 structures no longer function as passive historical catalogs documenting past literature.
374 Rather, they currently function seamlessly as meta-analytical predictive instruments
375 demanding exact and enforced standardized reporting architectures functionally equivalent
376 to the PRISMA protocols.

377 **4.3.2 Systemic Interconnectedness of Sector Barriers**

378 To properly comprehend the absolute functional impact of these verified methodological
379 advancements specifically addressing core physical construction constraints, a detailed
380 meta ontology network was constructed. This targeted analytical instrument was utilized to
381 meticulously map the exact co-occurrence linkages generated between embedded
382 systemic construction operational barriers. The resulting complex computational procedure
383 generated a clustered conceptual graph structure where exceptionally central ontological
384 nodes maintain the absolute highest degree of structural bibliographic linkage entirely
385 across the whole academic corpus. These absolute primary central semantic nodes were
386 identified functionally as core lifecycle design factors, risk metrics, and safety components,
387 a specific network architectural structure comprehensively synthesized and visualized in
388 Figure 7. The detailed meta ontology network clearly reveals that specific academic barrier
389 pairings consisting of prominent risk and physical safety attributes actively exhibit the
390 absolute highest density of interconnectivity, followed by strict structural quality
391 boundaries, and subsequently emerging sustainability and digitalization junction structures.



392

393 **Figure 7: The Meta-Ontology Network mapping systemic barrier interconnectivity.**

394

395 Evaluating these identical network nodes against the distinct continuous Interdisciplinarity

396 Index formulated sequentially from thematic cluster sourcing exposes a profound systemic

397 dichotomy limiting practical application integration. For explicit analytical example,

398 extremely advanced predictive risk assessment paradigms heavily incorporating lifecycle

399 design frameworks register extreme spatial structural horizontal spread (Entropy = 3.19).

400 These expansive frameworks and effectively function transversally spanning entirely across

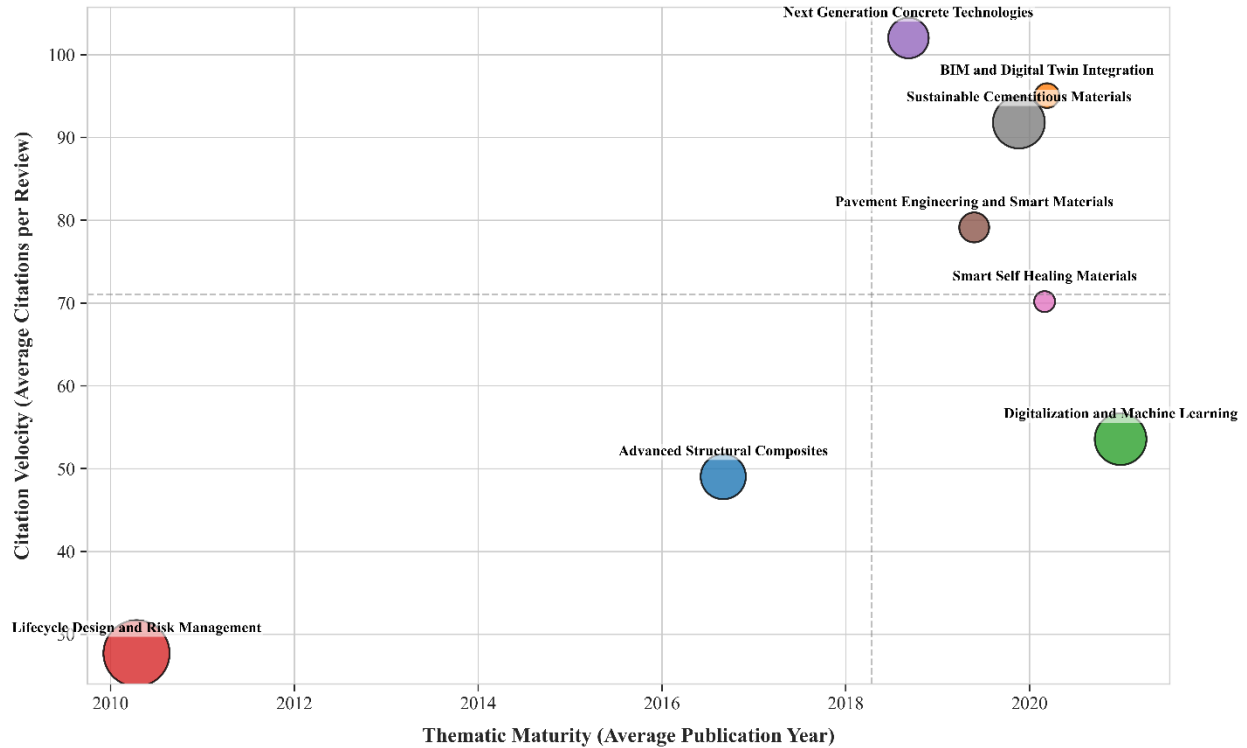
401 dozens of distinct academic publishing venues to completely address core barrier

402 requirements. This expansiveness crucially includes foundational protective functions such
403 as fully automated dynamic safety assurance protocols and parametric predictive economic
404 cost estimations [28, 13, 33]. Conversely, physical material focused academic clusters
405 rigorously evaluating specific isolated empirical elements like utilized recycled construction
406 aggregates completely remain severely and physically siloed ($\text{Entropy} < 2.0$). This isolation
407 actively occurs most prominently despite their high independent external citation velocities
408 [40]. This targeted systemic mathematical calculation quantifies a uniquely severe
409 structural operational vulnerability resident deep within the core literature. Incremental
410 physical composite material innovations are currently failing to comprehensively integrate
411 with the extensively required transversal oversight management protocols and advanced
412 predictive digital structural monitoring frameworks physically required to mitigate complex
413 holistic construction barriers.

414 **4.4 Emerging Trajectories and Predictive Analysis**

415 **4.4.1 Thematic Maturity and Velocity Measurement**

416 To delineate stagnant historical research frameworks from expanding frontiers, the
417 construction management review corpus was evaluated utilizing a mathematical Velocity
418 Matrix. This distinct analytical matrix crossed the calculated Average Publication Year
419 representing absolute maturity against the quantitative Average Citations per review
420 representing relative velocity. The resulting strategic distribution is actively illustrated
421 entirely in Figure 8.



422

423 **Figure 8: The Velocity Matrix (Thematic Maturity vs. Citation Velocity Index).**

424 The defined cluster designated "Next Generation Concrete Technologies" emerges as the
 425 absolute optimal high potential framework. This specific cluster achieves the highest
 426 absolute citation velocity measuring 102.0 citations per review despite possessing an recent
 427 maturation threshold quantitatively anchored at a mean publication year of 2018.6. This
 428 specific empirical trajectory aligns backward with heavily cited contemporary research
 429 actively forecasting the expansive prospects of advanced ultra high-performance concrete
 430 and complex sustainable waste integrations [41, 42]. Conversely, the specific operative
 431 paradigm defining "BIM and Digital Twin Integration" continuously maintains an extremely
 432 aggressive computational velocity indexing at 95.0. This momentum uniquely anchors to an
 433 even more recent baseline of 2020.1. This temporal velocity intersection forcefully
 434 categorizes it as a rapidly consolidating domain driving the entire discipline toward

435 normalized semantic data models [16]. Older heavily established paradigms including
 436 "Advanced Structural Composites" exhibit established but visibly slower citation velocity
 437 profiles dropping to 49.0 citations per respective review. These slowing trajectories are
 438 linked to much older foundational maturity profiles centering around 2016.6. Consequently,
 439 these older sectors now function as fully consolidated base knowledge rather than
 440 accelerating paradigm shifting momentum.

441

442 **4.4.2 Lexical Acceleration and Burst Dynamics**

443 Analyzing the calculated first derivative representing velocity and the critical second
 444 derivative representing explicit acceleration of specific individual keyword frequencies
 445 pinpoints the exact temporal bursts of emerging conceptual technologies. These precise
 446 acceleration vectors and respective peak intensity years are summarized and detailed
 447 quantitatively in Table 4.

448 **Table 4: Lexical Burst Trajectories and Instantaneous Acceleration Peaks**

Keyword	Total	Algorithmically	Burst
Technology/Concept	Occurrences	Identified	Intensity
	(2012-2025)	Burst Year	(Max Annual Acceleration)
Construction	697	2013	9.25
Durability	272	2025	8
Review	310	2025	8
Strength	299	2020	7.5

Cement	427	2019	6.5
Sustainability	152	2025	6
Concrete	749	2021	5.75
Mechanical Properties	208	2021	5.5
Literature Review	120	2021	5.5
Geopolymer	135	2020	5
Construction Industry	94	2012	4.5
Automation	50	2024	4.25
Infrastructure	82	2025	4
Microstructure	81	2021	3.25
Artificial Intelligence	72	2023	3.25
Project Management	46	2024	2.75
Machine Learning	91	2023	2.5
Building Information Modeling	58	2024	2.5
Bibliometric Analysis	37	2022	2.5
Systematic Literature Review	52	2025	2.5
Workability	34	2020	2.25
Building Information Modeling	60	2020	2.25
Fly Ash	50	2019	2
Recycling	55	2012	2
Systematic Review	58	2021	2

Deep Learning	55	2020	2
Geopolymer Concrete	43	2021	2
Compressive Strength	100	2021	1.5
Construction Management	49	2012	1.5
Reinforced Concrete	83	2020	1.5

449

450 The aggregated data quantitatively exposes a distinctly lexical acceleration rapidly moving
451 entirely away from generalized historical operational processes toward advanced predictive
452 digital optimization and sustainability architectures. Specifically, generalized generic
453 terminology such as the phrase "construction Industry" registered maximum historical burst
454 intensities residing extremely early in the overall corpus timeline generating an absolute
455 acceleration index of 4.5 in the year 2012. In stark mathematical contrast, advanced and
456 specific operational topics currently dominate the explicit acceleration index. Terms
457 including "Machine Learning" generated an acceleration of 2.5, "Artificial Intelligence"
458 strongly peaked at 3.25, and broad "Automation" specifically achieved a peak acceleration
459 index standing firmly at 4.25. All three advanced terminologies exclusively achieved their
460 maximal peak acceleration windows squarely post 2023. These explicit continuous lexical
461 bursts rigorously confirm the contemporary and permanent future systemic transition of the
462 entire domain toward predictive model driven digital ecologies and smart condition
463 monitoring. This strict mathematical substantiation firmly validates previously qualitative
464 research trend analyses targeting complex robotic physical collaboration alongside
465 advanced NLP integration [9, 43, 44].

466 **4.4.3 Thematic Obsolescence Evaluation**

467 The transition modeled by precise keyword velocity calculations is further corroborated by
 468 the direct mathematical application of the TOI. This calculation utilizes a ratio comparing
 469 recent publication loads spanning 2021 through 2026 against established structural
 470 historical baselines as calculated in Table 5.

471 **Table 5: Intra-Cluster Obsolescence Index and Volumetric Displacement**

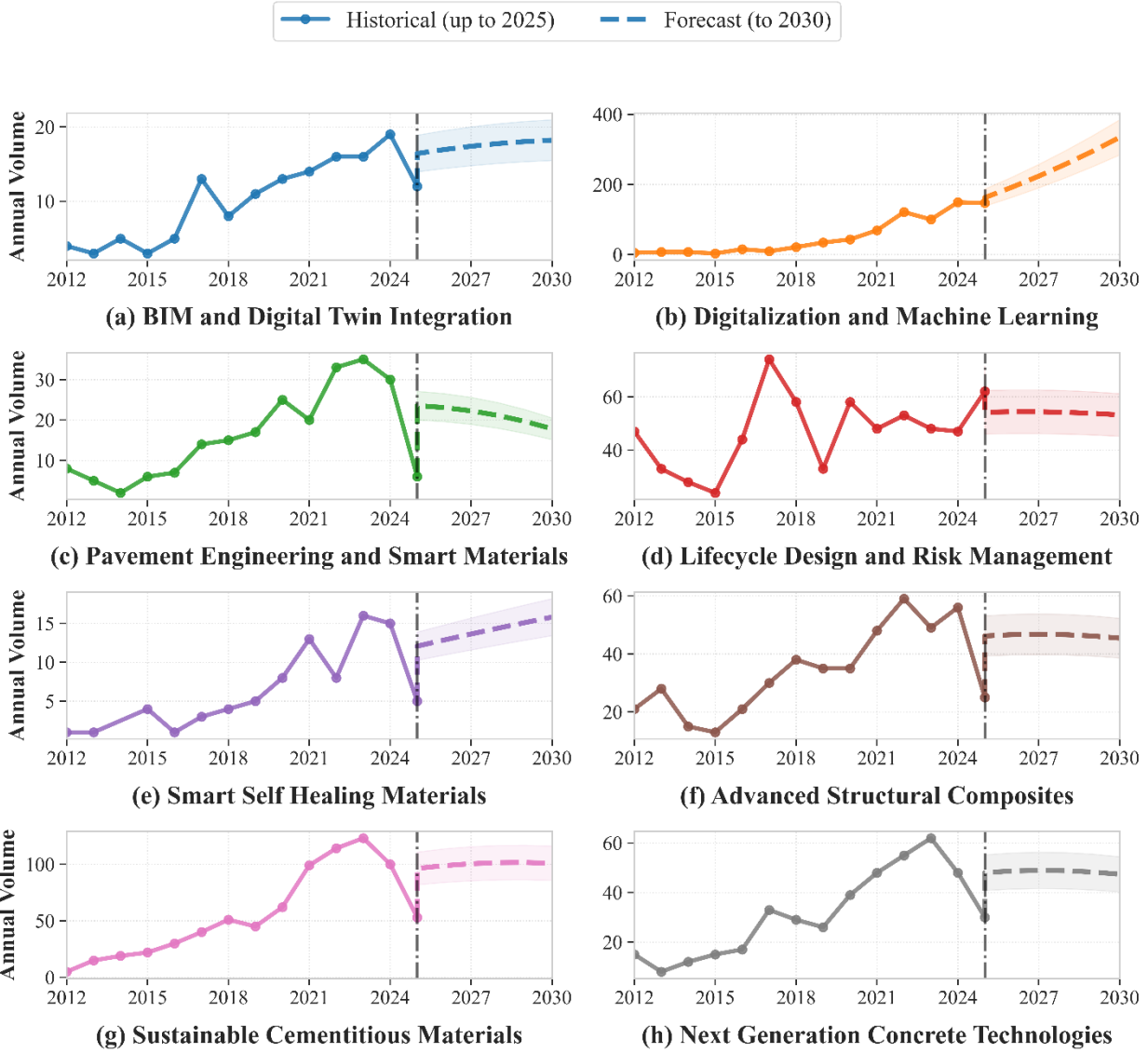
Thematic Cluster	Total Reviews	Historical Reviews (Pre- 2021)	Recent Reviews (2021- 2026)	TOI	Obsolescence Status
Digitalization and Machine Learning	823	210	613	2.919	Highly Active
Smart Self-Healing Materials	91	33	58	1.758	Highly Active
Sustainable Cementitious Materials	831	338	493	1.459	Consolidated
BIM and Digital Twin Integration	147	68	79	1.162	Consolidated
Pavement Engineering and Smart Materials	241	115	126	1.096	Consolidated
Next Generation Concrete Technologies	486	241	245	1.017	Consolidated
Advanced Structural Composites	616	370	246	0.665	Consolidated
Lifecycle Design and Risk Management	1379	1117	262	0.235	Declining/Obsolete

472 The specified cluster "Digitalization and Machine Learning" holds an TOI scaling to 2.919,
 473 utilizing 613 recent reviews versus 210 historical reviews. This calculation verifies it as the
 474 genuinely most active and intensely expansive structural paradigm currently residing in
 475 contemporary construction management. The adjacent physical material domain
 476 comprising "Smart Self-Healing Materials" follows tightly exactly on this numerical trajectory
 477 peaking at a TOI of 1.758. Critically, the historically operational cluster representing

478 "Lifecycle Design and Risk Management" registers a and declining TOI of 0.235. This specific
479 legacy category historically uniquely operated as the absolute functionally largest raw
480 volumetric structural base characterizing the entire discipline, yet it is currently contracting
481 from 1117 historical review frameworks down to a fractional 262 recent reviews. This explicit
482 and undeniable mathematical structural decline thoroughly verifies that generalized
483 historical lifecycle risk management frameworks are currently functioning uniformly as
484 objectively obsolete research trajectories. These specific aging trajectories will continuously
485 decline unless actively recoupled with contemporary digital integration sensing paradigms.

486 **4.4.4 Predictive Forecasting of Future Thematic Volumes**

487 Projecting the exact annual publication volumes characterizing the respective clusters via
488 optimized second order polynomial regressions generates validated forecasts extending
489 through the 2030 temporal threshold as presented in Figure 9.



490

491 **Figure 9: Predictive Time-Series Forecasting of Thematic Clusters through 2030.**

492 The mathematical forecasting functions completely and validate the independent
 493 quantitative findings generated by both the TOI models and the Lexical Burst momentum
 494 models. Legacy clusters are currently conclusively plateauing or entering permanent
 495 volumetric historical contraction. Conversely, the specific clusters representing
 496 "Digitalization and Machine Learning" exist alongside "Next Generation Concrete
 497 Technologies" project and non-linear expansion trajectories. Consequently, to optimize

498 systemic academic impact, the operational mechanisms dictating institutional funding,
499 academic journal publishing scopes, and long-term macro research directives must
500 physically heavily pivot heavily to align with these verifiable and rapidly accelerating white
501 space frameworks. Persisting in actively researching historically expanding but currently
502 contracting topics, including virtual reality physical applications or localized robotic
503 structural health monitoring [45, 46], is fully proven to yield a lower disciplinary impact
504 velocity compared against accelerating these new predictive paradigms.

505 **5. Discussion**

506 **5.1 Synthesis of Analytical Findings**

507 The quantitative meta synthesis characterizing the construction management review corpus
508 and corroborates the absolute existence of a fundamental structural change in basic
509 assumptions occurring presently within the entire discipline. The historically absolute
510 volumetric dominance possessed by generalized lifecycle design and heavily centralized risk
511 management paradigms previously commanded most of the structural literature output.
512 That historical dominance is currently experiencing absolute verified obsolescence when
513 analyzed via the simultaneously established TOI and continuous lexical acceleration
514 trajectory metrics. Simultaneously, the direct algorithmic extraction identically identifies
515 digitalization and core machine learning protocols as the new fundamental transversal hubs
516 directing total construction epistemology. This quantitative dynamic is expressly not merely
517 representing a localized temporal thematic trend. It functionally represents a permanent
518 structural reorganization completely redefining the field. The internal numerical velocity
519 profiles actively calculated across the isolated clusters correctly indicate that advanced

520 physical material sciences, expressly including next generation concrete technologies and
521 smart complex pavement engineering, are concurrently rapidly accumulating absolute
522 citation capital locally. However, their physical systemic structural integration directed into
523 broader transversally operating project management and predictive monitoring frameworks
524 stubbornly firmly remains severely physically functionally limited. This structural
525 fragmentation is evidenced by the low Shannon Entropy interdisciplinarity indices assigned
526 to the specific material clusters. This confirms that innovations currently operating in
527 physical infrastructure are struggling to integrate with the predictive digital control sensor
528 systems required to monitor them.

529 **5.2 Theoretical and Practical Implications**

530 Theoretically, this analytical outcome resolves the long-standing synthesis paradox
531 inherently limiting the construction management domain by providing a reproducible,
532 algorithmically derived mapping of the entire discipline. This structural mapping mitigates
533 the severe subjective biases and heuristic knowledge gaps that continually undermine
534 localized narrative "reviews of reviews." Practically, the strategic stratification generated by
535 aligning the internal conceptual density against the external network centrality offers an
536 immediately actionable, mathematical roadmap for structural stakeholders. Funding
537 agencies, peer reviewed journals, and institutional research directors must pivot resource
538 allocation algorithms to target the newly verified "white space" research trajectories.
539 Specifically, maximum scientific return on investment resides at the intersection of
540 semantic digital twin technologies and intelligent, self-healing structural composites.
541 Conversely, continuing to allocate institutional resources toward siloed, consolidated risk

542 management frameworks that operate completely devoid of advanced algorithmic
543 integrations will yield continually diminishing scientific and practical returns. Editorial
544 boards should actively promote standardizations in NLP driven meta data tagging to
545 facilitate automated indexing. Funding agencies are advised to incentivize projects that
546 bridge the "Material Digital Gap," such as the integration of smart self-healing sensory data
547 into BIM based facility management protocols.

548 **5.3 Methodological Boundaries and Limitations**

549 While the computational framework deployed in this study functions utilizing robust
550 protocols, distinct methodological boundaries inherently exist within the analysis. The
551 absolute reliance on the centralized Scopus database guarantees a high baseline of peer
552 reviewed quality, however it excludes gray literature, non-indexed regional publications, and
553 unverified industry preprints. This necessary filtration potentially underrepresents emerging,
554 localized construction technologies operating outside of the premier academic
555 establishment. Furthermore, while the deployment of Non-NMF and second order
556 polynomial forecasting algorithms prove high stability ratios, the computational depth is
557 restricted by the dimensionality of the input text arrays, specifically limited to abstracts and
558 indexed keywords. Future algorithmic iterations utilizing unconstrained full text parsing
559 paired with transformer based dynamic embeddings could capture deeper contextual
560 associations that standard term frequency vectorization mechanics occasionally generalize
561 or obscure.

562 **6. Conclusion**

563 This study constitutes the first large scale, verified "review of reviews" operating within the
564 construction management domain, executing a structural analysis of 4,614 empirical
565 manuscripts published between 1971 and 2026. By deploying a systematic ensemble of
566 NLP, unsupervised machine learning algorithms including non-NMF and t Distributed
567 Stochastic Neighbor Embedding, alongside advanced bibliometric modeling, this research
568 effectively eliminates the subjective synthesis bias inherent in traditional narrative literature
569 reviews. This methodology objectively maps the epistemological architecture of the field,
570 generating a multidimensional knowledge topography. The algorithmic factorization
571 quantifies a decisive structural pivot diverging from historically traditional lifecycle risk
572 methodologies and accelerating toward systematized, digitally integrated operational
573 paradigms. The introduction of the proprietary MRI, running concurrent with empirical
574 citation velocity, spatial interdisciplinarity measurements, and lexical acceleration metrics,
575 conclusively verifies the transition of construction management review literature from
576 passive historical catalogs into rigorous, predictive instruments essential for structural
577 advancement.

578 Based on the empirical trajectories and statistical polynomials forecasted through 2030,
579 future construction management research infrastructures must transition out of isolated
580 silos. The analytically identified interdisciplinary gap existing between transversal digital
581 modeling frameworks and high velocity physical material sciences must be cohesively
582 bridged to optimize barrier mitigation. Academic researchers, institutional funding directors,
583 and editorial boards are strongly advised by the velocity matrices to prioritize integrated
584 investigations uniting machine learning processes with next generation concrete

585 technologies and smart self-healing material networks. Methodologically, subsequent
586 meta-analyses must abandon opinion based narrative subjectivity in favor of reproducible
587 machine learning pipelines and topological data mappings. Implementing these
588 computational standards ensures that the rapidly expanding construction management
589 knowledge base remains navigable, resilient, and scientifically actionable.

590 **Data Availability**

591 The data that support the findings of this study are available on request.

592 **Funding**

593 This research received no external funding.

594 **Conflicts of interest**

595 The authors state that they have no conflicting financial interests or personal relationships
596 that might seem to have influenced the work presented in the study.

597 **References**

598 [1] Asadzadeh, A.; Arashpour, M.; Li, H.; Ngo, T.; Bab-Hadiashar, A.; Rashidi, A. (2020).
599 Sensor-based safety management. *Automation in Construction*, 113. DOI:
600 10.1016/j.autcon.2020.103128

601 [2] Meng, Q.; Zhang, Y.; Li, Z.; Shi, W.; Wang, J.; Sun, Y.; Xu, L.; Wang, X. (2020). A review of
602 integrated applications of BIM and related technologies in whole building life cycle.
603 *Engineering, Construction and Architectural Management*, 27(8), pp. 1647-1677. DOI:
604 10.1108/ECAM-09-2019-0511

605 [3] Kristombu Baduge, S.K.; Thilakarathna, S.; Perera, J.S.; Arashpour, M.; Sharafi, P.;
606 Teodosio, B.; Shringi, A.; Mendis, P. (2022). Artificial intelligence and smart vision for
607 building and construction 4.0: Machine and deep learning methods and applications.
608 *Automation in construction*, 141. DOI: 10.1016/j.autcon.2022.104440

609 [4] Li, X.; Li, J.; Wang, J.; Yuan, J.; Jiang, F.; Yu, X.; Xiao, F. (2021). Recent applications and
610 developments of Polyurethane materials in pavement engineering. *Construction and*
611 *Building Materials*, 304. DOI: 10.1016/j.conbuildmat.2021.124639

- 612 [5] Onaizi, A.M.; Huseien, G.F.; Lim, N.H.A.S.; Amran, M.; Samadi Kouchaksaraei, M. (2021).
613 Effect of nanomaterials inclusion on sustainability of cement-based concretes: A
614 comprehensive review. *Construction and Building Materials*, 306. DOI:
615 10.1016/j.conbuildmat.2021.124850
- 616 [6] Roychand, R.; Gravina, R.J.; Zhuge, Y.; Ma, X.; Youssf, O.; Mills, J.E. (2020). A
617 comprehensive review on the mechanical properties of waste tire rubber concrete.
618 *Construction and Building Materials*, 237. DOI: 10.1016/j.conbuildmat.2019.117651
- 619 [7] Losini, A.E.; Grillet, A.C.; Bellotto, M.; Woloszyn, M.; Dotelli, G. (2021). Natural additives
620 and biopolymers for raw earth construction stabilization – a review. *Construction and*
621 *Building Materials*, 304. DOI: 10.1016/j.conbuildmat.2021.124507
- 622 [8] Meng, Q.; Zhang, Y.; Li, Z.; Shi, W.; Wang, J.; Sun, Y.; Xu, L.; Wang, X. (2020). A review of
623 integrated applications of BIM and related technologies in whole building life cycle.
624 *Engineering, Construction and Architectural Management*, 27(8), pp. 1647-1677. DOI:
625 10.1108/ECAM-09-2019-0511
- 626 [9] Maruthupandian, S.; Chaliasou, A.; Kanellopoulos, A. (2021). Recycling mine tailings as
627 precursors for cementitious binders – Methods, challenges and future outlook.
628 *Construction and Building Materials*, 312. DOI: 10.1016/j.conbuildmat.2021.125333
- 629 [10] Darko, A.; Chan, A.P.C.; Adabre, M.A.; Edwards, D.J.; Hosseini, M.R.; Ameyaw Effah,
630 E.E. (2020). Artificial intelligence in the AEC industry: Scientometric analysis and
631 visualization of research activities. *Automation in Construction*, 112. DOI:
632 10.1016/j.autcon.2020.103081
- 633 [11] Schiavi, B.; Havard, V.; Beddiar, K.; Baudry, D. (2022). BIM data flow architecture with
634 AR/VR technologies: Use cases in architecture, engineering and construction. *Automation*
635 *in Construction*, 134. DOI: 10.1016/j.autcon.2021.104054
- 636 [12] Tang, F.; Zhou, G.; Li, H.-N.; Verstryngge, E. (2021). A review on fiber optic sensors for
637 rebar corrosion monitoring in RC structures. *Construction and Building Materials*, 313.
638 DOI: 10.1016/j.conbuildmat.2021.125578
- 639 [13] Du, T.; Turrin, M.; Jansen, S.; van den Dobbelsteen, A.; Fang, J. (2020). Gaps and
640 requirements for automatic generation of space layouts with optimised energy
641 performance. *Automation in Construction*, 116. DOI: 10.1016/j.autcon.2020.103132
- 642 [14] Ali, B.; Ahmed, A.; Ben Kahla, N.; Amir, M.; Azab, M.; Raza, A. (2022). A critical review
643 on the utilization of coir (coconut fiber) in cementitious materials. *Construction and*
644 *Building Materials*, 351. DOI: 10.1016/j.conbuildmat.2022.128957

- 645 [15] Melenbrink, N.; Werfel, J.; Menges, A. (2020). On-site autonomous construction
646 robots: Towards unsupervised building. *Automation in Construction*, 119. DOI:
647 10.1016/j.autcon.2020.103312
- 648 [16] Boje, C.; Guerriero, A.; Kubicki, S.; Rezgui, Y. (2020). Towards a semantic Construction
649 Digital Twin: Directions for future research. *Automation in Construction*, 114. DOI:
650 10.1016/j.autcon.2020.103179
- 651 [17] Tuhaise, V.V.; Tah, J.H.M.; Abanda, F.H. (2023). Technologies for digital twin
652 applications in construction. *Automation in Construction*, 152. DOI:
653 10.1016/j.autcon.2023.104931
- 654 [18] Xue, J.; Briseghella, B.; Huang, F.; Nuti, C.; Tabatabai, H.; Chen, B. (2020). Review of
655 ultra-high performance concrete and its application in bridge engineering. *Construction
656 and Building Materials*, 260. DOI: 10.1016/j.conbuildmat.2020.119844
- 657 [19] Farooq, F.; Jin, X.; Javed, M.; Akbar, A.; Shah, M.; Aslam, F.; Alyousef, R. (2021).
658 Geopolymer concrete as sustainable material: A state of the art review. *Construction and
659 Building Materials*, 306. DOI: 10.1016/j.conbuildmat.2021.124762
- 660 [20] GENCEL, O.; Karadag, O.; Oren, O.H.; Bilir, T. (2021). Steel slag and its applications in
661 cement and concrete technology: A review. *Construction and Building Materials*, 283. DOI:
662 10.1016/j.conbuildmat.2021.122783
- 663 [21] Mistri, A.; Bhattacharyya, S.K.; Dhami, N.; Mukherjee, A.; Barai, S.V. (2020). A review on
664 different treatment methods for enhancing the properties of recycled aggregates for
665 sustainable construction materials. *Construction and Building Materials*, 233. DOI:
666 10.1016/j.conbuildmat.2019.117894
- 667 [22] Guo, M.; Liang, M.; Jiao, Y.; Zhao, W.; Duan, Y.; Liu, H. (2020). A review of phase change
668 materials in asphalt binder and asphalt mixture. *Construction and Building Materials*, 258.
669 DOI: 10.1016/j.conbuildmat.2020.119565
- 670 [23] Shoji, D.; He, Z.; Zhang, D.; Li Prof., V.C. (2022). The greening of engineered
671 cementitious composites (ECC): A review. *Construction and Building Materials*, 327. DOI:
672 10.1016/j.conbuildmat.2022.126701
- 673 [24] Patel, T.; Guo, B.H.W.; Zou, Y. (2022). A scientometric review of construction progress
674 monitoring studies. *Engineering, Construction and Architectural Management*, 29(9), pp.
675 3237-3266. DOI: 10.1108/ECAM-10-2020-0799

- 676 [25] Mahmudnia, D.; Arashpour, M.; Jing Yang, R. (2022). Blockchain in construction
677 management: Applications, advantages and limitations. *Automation in Construction*, 140.
678 DOI: 10.1016/j.autcon.2022.104379
- 679 [26] Darko, A.; Chan, A.P.C.; Adabre, M.A.; Edwards, D.J.; Hosseini, M.R.; Ameyaw Effah,
680 E.E. (2020). Artificial intelligence in the AEC industry: Scientometric analysis and
681 visualization of research activities. *Automation in Construction*, 112. DOI:
682 10.1016/j.autcon.2020.103081
- 683 [27] Parsamehr, M.; Perera, U.S.; Dodanwala, T.C.; Perera, P.; Ruparathna, R. (2023). A
684 review of construction management challenges and BIM-based solutions: perspectives
685 from the schedule, cost, quality, and safety management. *Asian Journal of Civil
686 Engineering*, 24(1), pp. 353 389. DOI: 10.1007/s42107-022-00501-4
- 687 [28] Behera, S.K.; Mishra, D.P.; Singh, P.; Mishra, K.; Mandal, S.K.; Ghosh, C.N.; Kumar, R.;
688 Mandal, P.K. (2021). Utilization of mill tailings, fly ash and slag as mine paste backfill
689 material: Review and future perspective. *Construction and Building Materials*, 309. DOI:
690 10.1016/j.conbuildmat.2021.125120
- 691 [29] Debrah, C.; Chan, A.P.C.; Darko, A. (2022). Artificial intelligence in green building.
692 *Automation in Construction*, 137. DOI: 10.1016/j.autcon.2022.104192
- 693 [30] Asadzadeh, A.; Arashpour, M.; Li, H.; Ngo, T.; Bab-Hadiashar, A.; Rashidi, A. (2020).
694 Sensor-based safety management. *Automation in Construction*, 113. DOI:
695 10.1016/j.autcon.2020.103128
- 696 [31] Naser, M.Z.; Alavi, A.H. (2023). Error Metrics and Performance Fitness Indicators for
697 Artificial Intelligence and Machine Learning in Engineering and Sciences. *Architecture,
698 Structures and Construction*, 3(4), pp. 499 517. DOI: 10.1007/s44150-021-00015-8
- 699 [32] Hamada, H.M.; Thomas, B.; Tayeh, B.; Mat Yahaya, F.M.; Khairunisa, K.; Yang, J. (2020).
700 Use of oil palm shell as an aggregate in cement concrete: A review. *Construction and
701 Building Materials*, 265. DOI: 10.1016/j.conbuildmat.2020.120357
- 702 [33] Elmousalami, H.H. (2020). Artificial Intelligence and Parametric Construction Cost
703 Estimate Modeling: State-of-The-Art Review. *Journal of Construction Engineering and
704 Management*, 146(1). DOI: 10.1061/(ASCE)CO.1943-7862.0001678
- 705 [34] Zhang, Y.; Chang, R.; Mao, W.; Zuo, J.; Liu, L.; Han, Y. (2024). Challenges of Automating
706 Interior Construction Progress Monitoring. *Journal of Construction Engineering and
707 Management*, 150(9). DOI: 10.1061/JCEMD4.COENG-14637

708 [35] Sholevar, N.; Golroo, A.; Esfahani, S.R. (2022). Machine learning techniques for
709 pavement condition evaluation. *Automation in Construction*, 136. DOI:
710 10.1016/j.autcon.2022.104190

711 [36] Xiang, Q.; Xiao, F. (2020). Applications of epoxy materials in pavement engineering.
712 *Construction and Building Materials*, 235. DOI: 10.1016/j.conbuildmat.2019.117529

713 [37] Maduabuchukwu Nwakaire, C.; Yap, S.; Chuen, C.; Yuen, C.W.; Adebayo Ibrahim, H.
714 (2020). Utilisation of recycled concrete aggregates for sustainable highway pavement
715 applications; a review. *Construction and Building Materials*, 235. DOI:
716 10.1016/j.conbuildmat.2019.117444

717 [38] Kheradmandi, N.; Mehranfar, V. (2022). A critical review and comparative study on
718 image segmentation-based techniques for pavement crack detection. *Construction and*
719 *Building Materials*, 321. DOI: 10.1016/j.conbuildmat.2021.126162

720 [39] Dong, Z.; Han, T.; Zhang, B.; Zhu, H.; Wu, G.; Wei, Y.; Zhang, P. (2021). A review of the
721 research and application progress of new types of concrete-filled FRP tubular members.
722 *Construction and Building Materials*, 312. DOI: 10.1016/j.conbuildmat.2021.125353

723 [40] Das, S.; Adediran, A.; Rodrigue Kaze, C.; Mohammed Mustakim, S.; Leklou, N. (2022).
724 Production, characteristics, and utilization of rice husk ash in alkali activated materials: An
725 overview of fresh and hardened state properties. *Construction and Building Materials*, 345.
726 DOI: 10.1016/j.conbuildmat.2022.128341

727 [41] Amran, M.; Huang, S.-S.; Onaizi, A.M.; Makul, N.; Abdelgader, H.S.; Ozbakkaloglu, T.
728 (2022). Recent trends in ultra-high performance concrete (UHPC): Current status,
729 challenges, and future prospects. *Construction and Building Materials*, 352. DOI:
730 10.1016/j.conbuildmat.2022.129029

731 [42] Behera, S.K.; Mishra, D.P.; Singh, P.; Mishra, K.; Mandal, S.K.; Ghosh, C.N.; Kumar, R.;
732 Mandal, P.K. (2021). Utilization of mill tailings, fly ash and slag as mine paste backfill
733 material: Review and future perspective. *Construction and Building Materials*, 309. DOI:
734 10.1016/j.conbuildmat.2021.125120

735 [43] Wu, H.; Zhang, P.; Li, H.; Zhong, B.; Fung, I.W.H.; Lee, Y.Y.R. (2022). Blockchain
736 Technology in the Construction Industry: Current Status, Challenges, and Future
737 Directions. *Journal of Construction Engineering and Management*, 148(10). DOI:
738 10.1061/(ASCE)CO.1943-7862.0002380

739 [44] Liang, C.-J.; Wang, X.; Kamat, V.R.; Menassa, C.C. (2021). Human-Robot Collaboration
740 in Construction: Classification and Research Trends. *Journal of Construction Engineering*
741 *and Management*, 147(10). DOI: 10.1061/(ASCE)CO.1943-7862.0002154

742 [45] Zhang, X.; Zhang, K.; Wu, C.; Liu, K.; Jiang, K. (2020). Preparation of bio-oil and its
743 application in asphalt modification and rejuvenation: A review of the properties, practical
744 application and life cycle assessment. *Construction and Building Materials*, 262. DOI:
745 10.1016/j.conbuildmat.2020.120528

746 [46] Tian, Y.; Chen, C.; Sagoe-Crentsil, K.; Zhang, J.; Duan, W. (2022). Intelligent robotic
747 systems for structural health monitoring: Applications and future trends. *Automation in*
748 *Construction*, 139. DOI: 10.1016/j.autcon.2022.104273

749

750

751

752

753

754

755

756

757

758

759

760

761

762

763

764

765

766

767

768

769

770

771

772

773

774

775

776

777

778

779

780

781

782

783

784

785

786

787

788

789

790

791

792

793

794

795

796

797